



Introducing the safest, most reliable UL® Listed Power Distro on the market, and it's made by Whirlwind, the most trusted name in audio interface.

whirlwind
Power Link®
MADE IN USA 



POWER LINK

PORTABLE POWER DISTRIBUTION

Made in the USA using light weight aluminum panels, premium, fast response magnetic circuit breakers, and top of the line components. Built the way you'd expect when the Whirlwind name is on it.

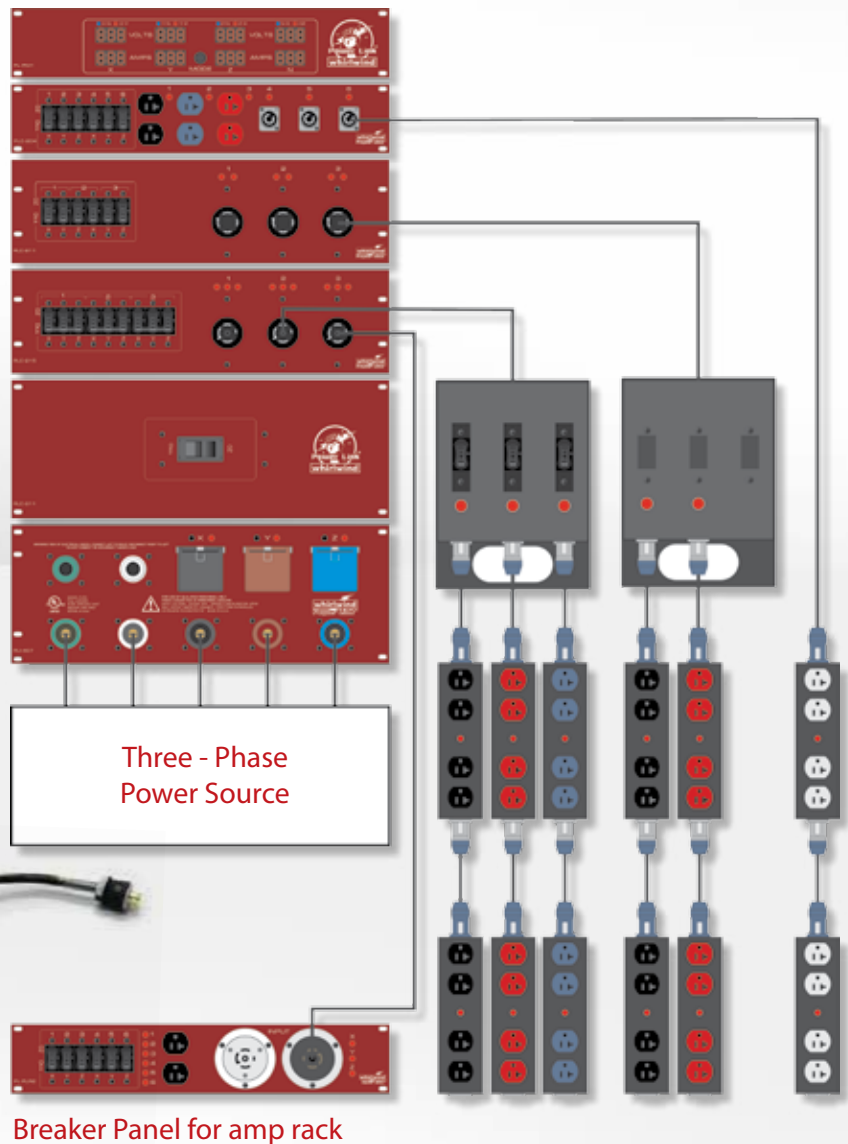
Set up diagram

Design your own

We've illustrated a typical set up for our Distro, but we understand the combinations are almost limitless. Log on to our website and download a FREE copy of our DesignPRO software and begin designing your next distro today! at whirlwindusa.com



DesignPRO panel building software.

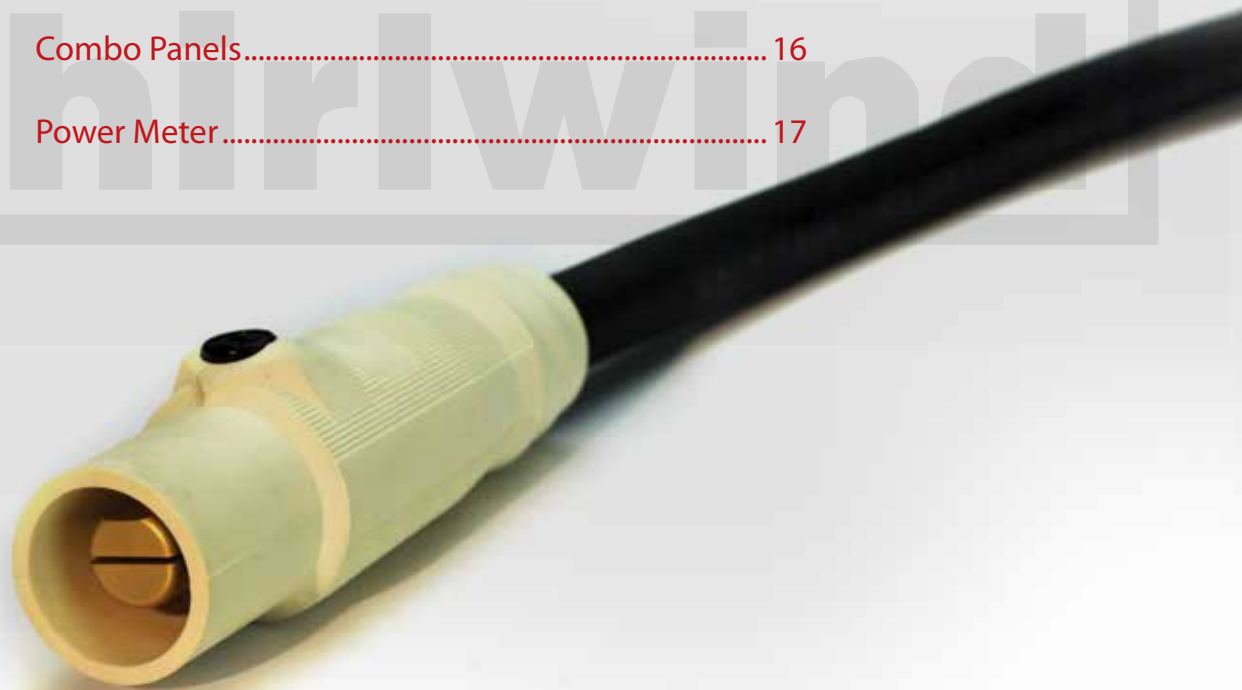


whirlwind Power Link®

MADE IN USA 

table of contents

Outlet Boxes.....	2 - 3
Distro Breakout Boxes.....	4 - 5
Cables/Connectors/Bulk.....	6 - 7
PLR & PLD Distros.....	8 - 9
Power Packs & PL2 Stringer Boxes.....	10 - 11
Breaker Panels & Output Panels.....	12 - 13
Input Panels.....	14 - 15
Combo Panels.....	16
Power Meter.....	17





PL1-420- BK



PL1-420- RD



PL1-420- WH



PL1-420- BL



PL1-420-NAC3



PL1-420-GFI



PL1-420B-(color)



(CLAMP AND BOX NOT INCLUDED). PL1-420-FB

(Boxes shown front and back, not sold in pairs. All PL drop boxes feature indicator light.)



outlet boxes

PL1-420- (Color)

(2) Hubbell® 5352 specification grade, 20A duplex receptacles.
(1) 20A Neutrik Powercon inlet,
(1) 20A Neutrik Powercon outlet.

PL1-420-NAC3

(1) 20A Powercon inlet and (5) Neutrik 20A Powercon outlets.

PL1-420- GFI

(2) Hubbell 20A GFI receptacles, (1) 20A Neutrik Powercon inlet, (1) 20A Neutrik Powercon outlet.

PL1-420B-(color)

(2) Hubbell 5352 specification grade, 20A duplex receptacles. (1) 20A Neutrik Powercon inlet, (1) 20A Neutrik Powercon outlet, (1) 20A breaker that only affects the outlets in the box.

PL1-420-FB

Flying Bracket accepts any clamp with a 1/2 inch mounting hole.





PL1DI-L1420-010



PL1DI-L1420-000

Available with optional Hubbell disconnect



PL1DI-L1430-010



PL1DI-L1430-000

Available with optional Hubbell disconnect



PL1DI-L2120-010



PL1DI-L2120-000

Available with optional Hubbell disconnect



PL1DI-L2130-010



PL1DI-L2130-000

Available with optional Hubbell disconnect

distro boxes

PL1DI-L1420-010

Splits a single L14-20 NEMA Twist-Lock AC connector to (2) 20A Neutrik® Powercon® outlets.

PL1DI-L1430-010

Splits a single L14-30 NEMA Twist-Lock AC connector to (2) 20A Neutrik Powercon outlets.

PL1DI-L2120-010

Splits a single L21-20 NEMA Twist-Lock AC connector to (3) 20A Neutrik Powercon outlets.

PL1DI-L2130-010

Splits a single L21-30 NEMA Twist-Lock AC connector to (3) 20A Neutrik Powercon outlets.



PL1DI-SPX-000

A 19 pin Socapex® male feeds (6) 20A Neutrik Powercon circuits.



Whirlwind offers both pre made cable assemblies as well as bulk wire and connectors. Call us today and have us quote your next distro project!



Cam Style Feeder Entertainment Cables

Whirlwind Feeder cables and connectors, available in a variety of sizes and lengths. Call for details.

Connectors

Male inline single pole

- HBL400F/BK (Black)
- HBL400F/BL (Blue)
- HBL400F/R (Red)
- HBL400F/G (Green)
- HBL400F/W (White)

Female inline single pole

- HBL400M/BK (Black)
- HBL400M/BL (Blue)
- HBL400M/R (Red)
- HBL400M/G (Green)
- HBL400M/W (White)



Bulk Feeder Entertainment Wire

Whirlwind Bulk Feeder cable is available in a variety of sizes and lengths. Call for details.

Rubber Jacket Entertainment Cable

- W4/OFC4/O 400 AMP
- W2OFC4/O 300 AMP
- W2/FC2 ga 175 AMP



NAC3-(length)

Neutrik Powercon® inlet to Neutrik Powercon outlet for linking PL1-420 boxes together, or to PL1DI distro interface boxes.

NAC3- 515P-(length)

Male Hubble® Edison to Neutrik Powercon inlet.



SPX19-(length)

Socapex 19 pin male to Socapex 19 pin female, 12 AWG cable.



L1420-(length) *(pictured left)*

L14-20 male to L14-20 female, 12 AWG cable.

L1430-(length)

L14-30 male to L14-30 female, 12 AWG cable.

L2120-(length)

L21-20 male to L21-20 female, 12 AWG cable.

L2130-(length)

L21-30 male to L21-30 female, 12 AWG cable.



powerCON TRUE1

The powerCON TRUE1 is Neutrik's first true mains connector with breaking capacity according to IEC 60320 and UL 498 standard and thus allows disconnecting under load. The UL and VDE certified, single-phase system is designed for 16 A, 250 V. The cable connector comes with an integrated twist-lock and can only be opened with a tool.





plr distros

UL-listed enclosures designed for use in equipment racks or portable ATA cases. Because PLR distros are completely enclosed, there is no need for a custom, aluminum-lined case. Simply drop it in your favorite road case and fire it up. Removable rear rack rails are included with every PLR.



pld distros and truck packs



PL-PM1 Power Meter

- Eight, super-bright, 14.2mm GaAIAs LED displays insure high-visibility even in direct sunlight.
- Requires only a single active phase for full functionality.
- 208V (phase-phase) and 120V (phase-neutral) voltage monitoring modes.
- X, Y, Z and N loads monitored simultaneously in both modes.
- Monitoring of N-G voltage (120V mode) and Frequency (208V mode).



PL-PM1 Power Meter

General

- Hydraulic magnetic circuit breakers ensure accurate, rapid branch circuit protection and are not subject to the effects of ambient heat and the erosion of functionality that is inherent to thermal circuit breakers.
- Genuine Hubbell receptacles and mains connectors.
- Neon indicators for every circuit.
- Exclusive, free Design Pro software allows easy distro configuration.
- Hand-wired in Rochester, NY.



Available in Truck Pack dimensions,
ready for a tour near you.



Available in a variety of
custom anodized colors

power packs

Designed primarily for use in amplifier racks, our POWER PACK® modules convert a multi-phase input into breakered, branch circuits to feed individual amplifiers. All POWER PACK® modules are fully enclosed, UL-listed devices.

PL2 stringers

Like our popular PL1 Edison boxes, the PL2 series is also designed to distribute AC power to multiple locations, with the additional benefit of utilizing multiple circuits. Each PL2 module converts a multi-phase input into independent branch circuits, and also provides a multi-phase output connector so multiple boxes can be linked together. The PL2 series is perfect for distributing power around a stage, trade show kiosks or festival booths. The optional PL2-FB fly bracket allows the PL2 to be mounted to truss for multi-circuit power distribution to loudspeakers and lighting fixtures. All PL2 modules are UL-listed devices.



C **UL** US
LISTED



C **UL** US
LISTED

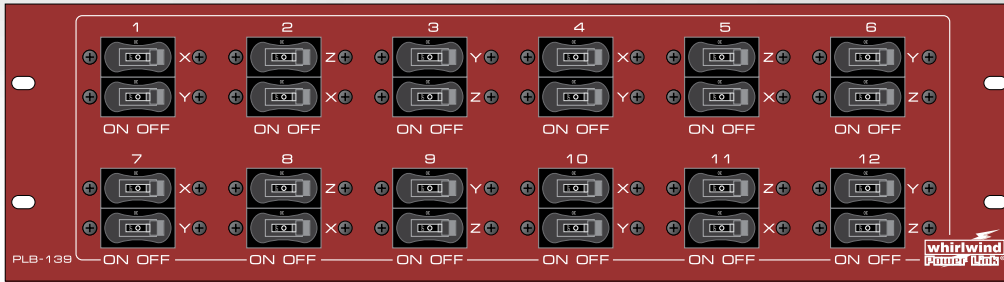


C **UL** US
LISTED



C **UL** US
LISTED





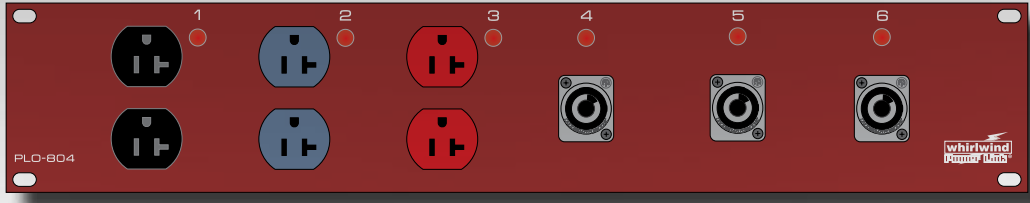
Available in Red,
anodized aluminum,
additional colors
available upon
request.

Options

PLB-101	6 20A 1P breakers, 2-RU
PLB-102	9 20A 1P breakers, 2-RU
PLB-103	12 20A 1P breakers, 2-RU
PLB-104	18 20A 1P breakers, 2-RU
PLB-105	24 20A 1P breakers, 3-RU
PLB-106	3 20A 2P breakers, 4-RU
PLB-107	6 20A 2P breakers, 3-RU
PLB-108	9 20A 2P breakers, 3-RU
PLB-109	12 20A 2P breakers, 4-RU
PLB-110	3 20A 3P breakers, 3-RU
PLB-111	6 20A 3P breakers, 3-RU
PLB-131	6 30A 1P breakers, 2-RU
PLB-132	9 30A 1P breakers, 2-RU
PLB-133	12 30A 1P breakers, 2-RU
PLB-134	18 30A 1P breakers, 2-RU
PLB-135	24 30A 1P breakers, 3-RU
PLB-136	3 30A 2P breakers, 3-RU
PLB-137	6 30A 2P breakers, 3-RU
PLB-138	9 30A 2P breakers, 3-RU
PLB-139	12 30A 2P breakers, 4-RU
PLB-140	3 30A 3P breakers, 3-RU
PLB-141	6 30A 3P breakers, 3-RU
PLB-151	8 50A 1P breakers, 2-RU
PLB-152	12 50A 1P breakers, 2-RU
PLB-153	4 50A 2P breakers, 3-RU
PLB-154	4 50A 3P breakers, 3-RU



Output Panels 

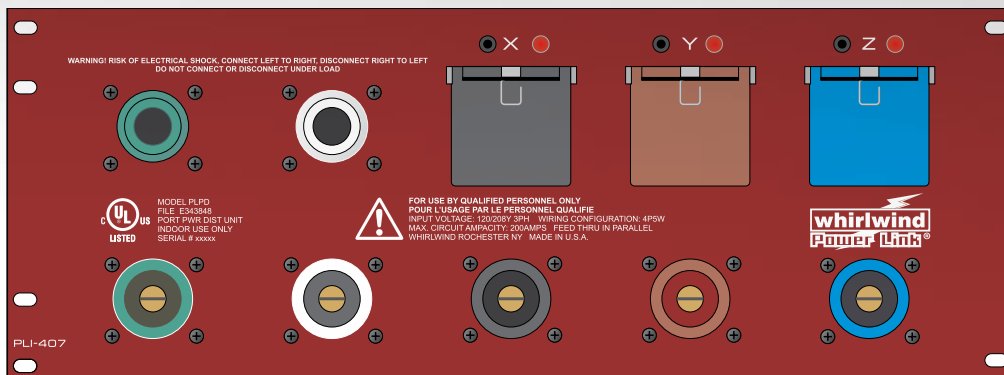


Available in Red,
anodized aluminum,
additional colors
available upon
request.

Options

PLO-801	6 20A duplex, 2-RU
PLO-802	6 NAC3MPB, 2-RU
PLO-803	3 NAC3FPX, 2-RU
PLO-804	3 duplex, 3 NAC3MPB, 2-RU
PLO-805	3 duplex, 3 NAC3FPX, 2-RU
PLO-806	3 NAC3MPB, 3 NAC3FPX
PLO-807	6 L5-20, 3 RU
PLO-808	6 L14-20, single-phase circuits, 3-RU
PLO-809	6 L15-20, 3-RU
PLO-810	6 L21-20, single-phase circuits, 3-RU
PLO-811	1 SPX19CFP, single-phase circuits, 3-RU
PLO-812	2 SPX19CFP, single-phase circuits, 3-RU
PLO-813	3 SPX19CFP, single-phase circuits, 3-RU
PLO-814	4 SPX19CFP, single-phase circuits, 3-RU
PLO-821	6 L6-20, 3-RU
PLO-822	6 L14-20, single-phase circuits, 3-RU
PLO-823	6 L14-20, 3-RU
PLO-824	1 SPX19CFP, 208V, 3-RU
PLO-825	2 SPX19CFP, 208V, 3-RU
PLO-826	3 SPX19CFP, 208V, 3-RU
PLO-827	4 SPX19CFP, 208V, 3-RU
PLO-828	6 L21-20, 3-RU
PLO-831	6 L5-20, 3-RU
PLO-832	6 L14-30, single-phase circuits, 3-RU
PLO-833	6 L15-30, 3-RU
PLO-834	6 L21-30, single-phase circuits, 3-RU
PLO-835	6 L6-30, 3-RU
PLO-836	6 L14-30, 3-RU
PLO-837	6 L15-30, 3-RU
PLO-838	6 L21-30, 3-RU
PLO-851	4 CS6369, single-phase circuits, 4-RU
PLO-852	4 CS6369, 4-RU
PLO-853	4 CS8369, 4-RU

Input Panels



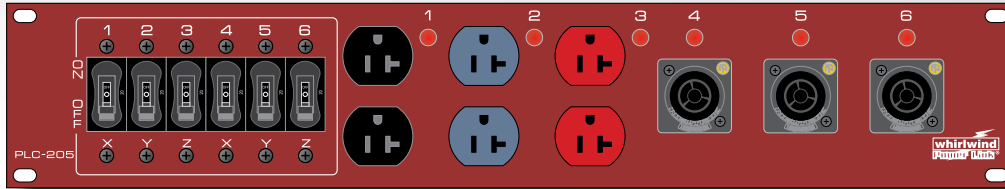
Available in Red, anodized aluminum, additional colors available upon request.

Options

PLI-401	5 Cam-Lok, 12 circuits per leg, PM1-ready, 3-RU
PLI-402	5 Cam-Lok, 12 circuits per leg, PM1-ready, rev gnd, 3-RU
PLI-403	5 Cam-Lok, 12 circuits per leg, PM1-ready, rev gnd, rev neu, 3-RU
PLI-404	5 Cam-Lok, 12 circuits per leg, 3-RU
PLI-405	5 Cam-Lok, 12 circuits per leg, rev gnd, 3-RU
PLI-406	5 Cam-Lok, 12 circuits per leg, rev gnd, rev neu, 3-RU
PLI-407	10 Cam-Lok, 12 circuits per leg, PM1-ready, 4-RU
PLI-408	10 Cam-Lok, 12 circuits per leg, PM1-ready, rev gnd, 4-RU
PLI-409	10 Cam-Lok, 12 circuits per leg, PM1-ready, rev gnd, rev neu, 4-RU
PLI-410	10 Cam-Lok, 12 circuits per leg, 4-RU
PLI-411	10 Cam-Lok, 12 circuits per leg, rev gnd, 4-RU
PLI-412	10 Cam-Lok, 12 circuits per leg, rev gnd, rev neu, 4-RU
PLI-413	6 Cam-Lok, 12 circuits per leg, PM1-ready, 3-RU
PLI-414	6 Cam-Lok, 12 circuits per leg, PM1-ready, rev gnd, 3-RU
PLI-415	6 Cam-Lok, 12 circuits per leg, PM1-ready, rev gnd, rev neu, 3-RU
PLI-416	6 Cam-Lok, 12 circuits per leg, 3-RU
PLI-417	6 Cam-Lok, 12 circuits per leg, rev gnd, 3-RU
PLI-418	6 Cam-Lok, 12 circuits per leg, rev gnd, rev neu, 3-RU
PLI-419	12 Cam-Lok, 12 circuits per leg, PM1-ready, 4-RU
PLI-420	12 Cam-Lok, 12 circuits per leg, PM1-ready, rev gnd, 4-RU
PLI-421	12 Cam-Lok, 12 circuits per leg, PM1-ready, rev gnd, rev neu, 4-RU
PLI-422	12 Cam-Lok, 12 circuits per leg, 4-RU
PLI-423	12 Cam-Lok, 12 circuits per leg, rev gnd, 4-RU
PLI-424	12 Cam-Lok, 12 circuits per leg, rev gnd, rev neu, 4-RU

PLI-431	5 Cam-Lok, 24 circuits per leg, PM1-ready, 3-RU
PLI-432	5 Cam-Lok, 24 circuits per leg, PM1-ready, rev gnd, 3-RU
PLI-433	5 Cam-Lok, 24 circuits per leg, PM1-ready, rev gnd, rev neu, 3-RU
PLI-434	5 Cam-Lok, 24 circuits per leg, 3-RU
PLI-435	5 Cam-Lok, 24 circuits per leg, rev gnd, 3-RU
PLI-436	5 Cam-Lok, 24 circuits per leg, rev gnd, rev neu, 3-RU
PLI-437	10 Cam-Lok, 24 circuits per leg, PM1-ready, 4-RU
PLI-438	10 Cam-Lok, 24 circuits per leg, PM1-ready, rev gnd, 4-RU
PLI-439	10 Cam-Lok, 24 circuits per leg, PM1-ready, rev gnd, rev neu, 4-RU
PLI-440	10 Cam-Lok, 24 circuits per leg, 4-RU
PLI-441	10 Cam-Lok, 24 circuits per leg, rev gnd, 4-RU
PLI-442	10 Cam-Lok, 24 circuits per leg, rev gnd, rev neu, 4-RU
PLI-443	6 Cam-Lok, 24 circuits per leg, PM1-ready, 3-RU
PLI-444	6 Cam-Lok, 24 circuits per leg, PM1-ready, rev gnd, 3-RU
PLI-445	6 Cam-Lok, 24 circuits per leg, PM1-ready, rev gnd, rev neu, 3-RU
PLI-446	6 Cam-Lok, 24 circuits per leg, 3-RU
PLI-447	6 Cam-Lok, 24 circuits per leg, rev gnd, 3-RU
PLI-448	6 Cam-Lok, 24 circuits per leg, rev gnd, rev neu, 3-RU
PLI-449	12 Cam-Lok, 24 circuits per leg, PM1-ready, 4-RU
PLI-450	12 Cam-Lok, 24 circuits per leg, PM1-ready, rev gnd, 4-RU
PLI-451	12 Cam-Lok, 24 circuits per leg, PM1-ready, rev gnd, rev neu, 4-RU
PLI-452	12 Cam-Lok, 24 circuits per leg, 4-RU
PLI-453	12 Cam-Lok, 24 circuits per leg, rev gnd, 4-RU
PLI-454	12 Cam-Lok, 24 circuits per leg, rev gnd, rev neu, 4-RU

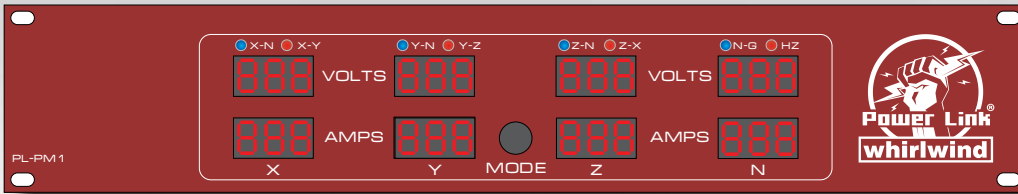




Available in Red, anodized aluminum, additional colors available upon request.

Options

PLC-201	6 20A 1P breakers, 6 duplex, 2-RU
PLC-202	6 20A 1P breakers, 6 NAC3MPB, 2-RU
PLC-203	6 20A 1P breakers, 6 NAC3FPX, 2-RU
PLC-204	6 20A 1P breakers, 3 duplex, 3 NAC3MPB, 2-RU
PLC-205	6 20A 1P breakers, 3 duplex, 3 NAC3FPX, 2-RU
PLC-206	6 20A 1P breakers, 3 NAC3MPB, 3 NAC3FPX, 2-RU
PLC-207	6 20A 1P breakers, 6 L5-20, 3-RU
PLC-208	6 20A 1P breakers, 1 SPX19CFP, 3-RU
PLC-209	12 20A 1P breakers, 2 SPX19CFP, 3-RU
PLC-211	6 20A 1P breakers, 3 L14-20, 3-RU
PLC-213	6 20A 2P breakers, 1 SPX19CFP, 208V, 3-RU
PLC-214	3 20A 2P breakers, 3 L6-20, 3-RU
PLC-215	9 20A 1P breakers, 3 L21-20, 3-RU
PLC-216	3 20A 2P breakers, 3 L14-20, 3-RU
PLC-217	3 20A 3P breakers, 3 L15-20, 3-RU
PLC-218	3 20A 3P breakers, 3 L21-20, 3-RU
PLC-231	6 30A 1P breakers, 3 L5-30, 3-RU
PLC-232	6 30A 1P breakers, 3 L14-30, 3-RU
PLC-234	9 30A 1P breakers, 3 L21-30, 3-RU
PLC-235	3 30A 2P breakers, 3 L6-30, 3-RU
PLC-236	3 30A 2P breakers, 3 L14-30, 3-RU
PLC-237	3 30A 3P breakers, 3 L15-30, 3-RU
PLC-238	3 30A 3P breakers, 3 L21-30, 3-RU
PLC-251	6 50A 1P breakers, 3 CS6369, 3-RU
PLC-252	3 50A 2P breakers, 3 CS6369, 3-RU
PLC-253	3 50A 3P breakers, 3 CS8369, 208V, 3-RU



Available in Red, anodized aluminum, additional colors available upon request.

Options

PL-PM1	Meter
PLA-001	1-RU blank
PLA-002	2-RU blank
PLA-003	3-RU blank
PLD-ATA08	ATA flight case, 8-RU
PLD-ATA12	ATA flight case, 12-RU
PLD-ATA16	ATA flight case, 16-RU
PLD-ATA20	ATA flight case, 20-RU
PLM-601	100A main breaker, 3-RU
PLM-602	200A main breaker, 4-RU
PLR-RE06	rack enclosure, 6-RU
PLR-RE08	rack enclosure, 8-RU
PLR-RE12	rack enclosure, 12-RU
PLR-RE16	rack enclosure, 16-RU



Custom rack enclosures, and flight cases available upon request. Visit us at whirlwindusa.com for more details.



