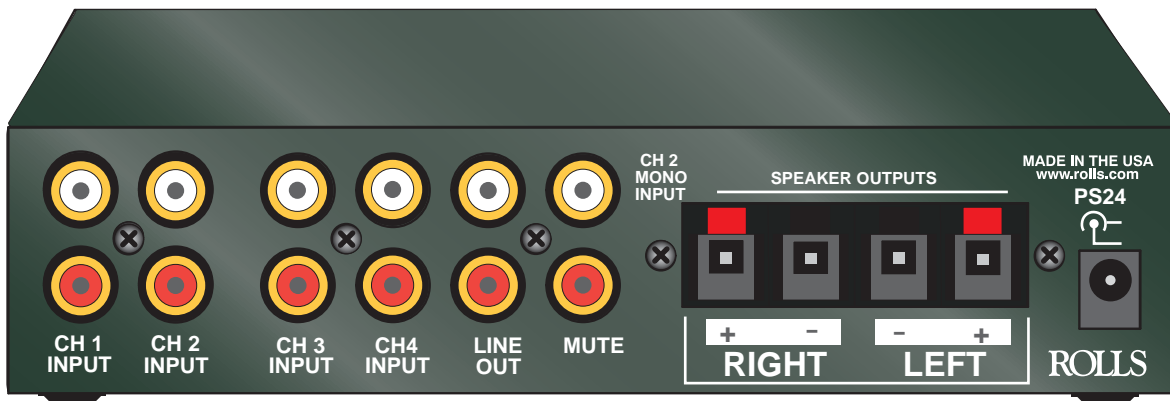


20 + 20 WATT MIXER - AMPLIFIER

MA255

ROLLS



The new MA255 is a compact class D stereo amplifier with a 4 CH. stereo mixer built in. It has 20 watts per channel @ 4 Ohms. The class D low heat design gives the MA255 the ability to be mounted in very tight applications. It will work great in ceilings by projectors, or anywhere small and heat free amplification is required. The MA255 is built in an all metal chassis and weighs 1 pound. Overall dimension are 6.75" X 3.5" X 1.5". Bottom mounts are provided for permanent installations. The MA255 has an included 24 VDC external power supply. The 4 channel mixer section consists of 4 separate RCA stereo inputs, along with a 3.5mm (1/8") stereo input perfect for an ipod or laptop computer type input.

SPECIFICATIONS

Line Input Impedance:	10K Ohms
Power Output:	20 watts X 2 @ 4 Ohms.
Voltage Gain:	30 dB
Maximum Supply Voltage:	24 VDC
THD:	.05% typical
Efficiency:	85%
Bandwidth:	20Hz - 25 kHz
Size:	6.75" x 3.5" x 1.5"
Weight:	1 lb.

ROLLS MIXER - AMP 20 + 20 Watts

INSTALLATION MIX - AMPLIFIER

STEREO INPUTS AND OUTPUTS

ROLLS

5968 SOUTH 350 WEST S.L.C., UT 84107

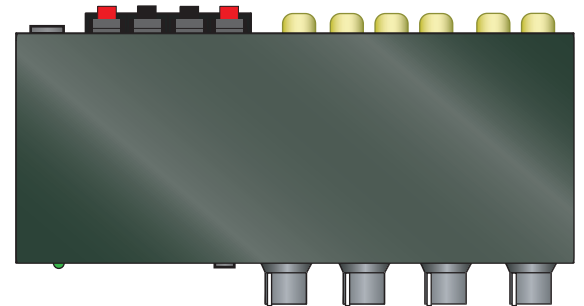
PHONE: 801-263-9053

FAX: 801-236-9068

DATA SHEET FOR MA255

www.rolls.com

Size: 6.75" X 3.5" X 1.5"



Included - 24 VDC ROLLS PS24 external power supply



CE



MADE IN USA