



# 3D VISION PLUS



## *User Instructions*

©2017 ADJ Products, LLC all rights reserved. Information, specifications, diagrams, images, and instructions herein are subject to change without notice. ADJ Products, LLC logo and identifying product names and numbers herein are trademarks of ADJ Products, LLC. Copyright protection claimed includes all forms and matters of copyrightable materials and information now allowed by statutory or judicial law or hereinafter granted. Product names used in this document may be trademarks or registered trademarks of their respective companies and are hereby acknowledged. All non-ADJ Products, LLC brands and product names are trademarks or registered trademarks of their respective companies.

**ADJ Products, LLC** and all affiliated companies hereby disclaim any and all liabilities for property, equipment, building, and electrical damages, injuries to any persons, and direct or indirect economic loss associated with the use or reliance of any information contained within this document, and/or as a result of the improper, unsafe, insufficient and negligent assembly, installation, rigging, and operation of this product.

## DOCUMENT VERSION

Please check [www.adj.com](http://www.adj.com) for the latest revision/update of this guide.

Date	Document Version	DMX Channel Modes	Notes
10/19/17	1	3/9/13	Initial Release

Europe Energy Saving Notice

Energy Saving Matters (EuP 2009/125/EC)

Saving electric energy is a key to help protecting the environment. Please turn off all electrical products when they are not in use. To avoid power consumption in idle mode, disconnect all electrical equipment from power when not in use. Thank you!

Introduction	3
Features	4
Warranty Registration	4
Safety Precautions	5
DMX Channel Mode	6
System Menu	10
Operating Instructions	11
DMX Control	13
Master-Slave Configuration	13
Multiple Unit Power Linking	13
Pixel Configuration Diagram	14
Mounting and Grouping	15
Dimensional Drawings	17
Fuse Replacement	18
Warranty	19
Technical Specifications	20

**Unpacking:** Thank you for purchasing the 3D Vision Plus by ADJ Products, LLC. Every 3D Vision Plus has been thoroughly tested and has been shipped in perfect operating condition. Carefully check the shipping carton for damage that may have occurred during shipping. If the carton appears to be damaged, carefully inspect your fixture for any damage and be sure all accessories necessary to operate the unit has arrived intact. In the case damage has been found or parts are missing, please contact our toll free customer support number for further instructions. Do not return this unit to your dealer without first contacting customer support.

**Introduction:** The 3D Vision Plus is a Hexagonal shaped LED panel with stunning 3D visual effects when used in multiples. This LED panel is controlled via manual control or DMX control. Kling-Net or Art-Net can be used when used with EZ Kling. Dynamic effects can be played on it, which makes it a great lighting system for DJ's and night clubs.

**Customer Support:** ADJ Products, LLC provides a toll free customer support line, to provide set up help and to answer any question should you encounter problems during your set up or initial operation. You may also visit us on the web at [www.adj.com](http://www.adj.com) for any comments or suggestions. Service Hours are Monday through Friday 8:00 a.m. to 4:30 p.m. Pacific Standard Time.

Voice: (800) 322-6337  
Fax: (323) 582-2941  
E-mail: [support@americandj.com](mailto:support@americandj.com)

To purchase parts online visit <http://parts.americandj.com>

**Warning!** To prevent or reduce the risk of electrical shock or fire, do not expose this unit to rain or moisture.

**Caution!** There are no user serviceable parts inside this unit. Do not attempt any repairs yourself, doing so will void your manufactures warranty. In the unlikely event your unit may require service please contact ADJ Products, LLC.

**PLEASE recycle the shipping carton when ever possible.**

## 3D Vision Plus

## Features

- Multi-Colors
- Electronic Dimming 0-100%
- Built in Microphone
- DMX-512 protocol
- CAT 5 Straight Network Cable included.
- 72 x 5050 SMD 3-in-1 RGB LED's
- Safety Cable Included
- Three DMX Modes: 3 Channel Mode, 9 Channel Mode, and 13 Channel Mode.
- Multiple Unit Power Linking (See page 13)

## 3D Vision Plus

## Warranty Registration

The 3D Vision Plus carries a 2 year limited warranty. Please fill out the enclosed warranty card to validate your purchase. All returned service items whether under warranty or not, must be freight pre-paid and accompany a return authorization (R.A.) number. The R.A. number must be clearly written on the outside of the return package. A brief description of the problem as well as the R.A. number must also be written down on a piece of paper included in the shipping carton. If the unit is under warranty, you must provide a copy of your proof of purchase invoice. You may obtain a R.A. number by contacting our customer support team on our customer support number. All packages returned to the service department not displaying a R.A. number on the outside of the package will be returned to the shipper.

- To reduce the risk of electrical shock or fire, do not expose this unit rain or moisture
- Do not spill water or other liquids into or on to your unit.
- Do not attempt to operate this unit if the power cord has been frayed or broken. Do not attempt to remove or break off the ground prong from the electrical cord. This prong is used to reduce the risk of electrical shock and fire in case of an internal short.
- Disconnect from main power before making any type of connection.
- Do not remove the cover under any conditions. There are no user serviceable parts inside.
- Never operate this unit when it's cover is removed.
- Never plug this unit in to a dimmer pack
- Always be sure to mount this unit in an area that will allow proper ventilation. Allow about 6" (15cm) between this device and a wall.
- Do not attempt to operate this unit, if it becomes damaged.
- This unit is intended for indoor use only, use of this product outdoors voids all warranties.
- During long periods of non-use, disconnect the unit's main power.
- Always mount this unit in safe and stable matter.
- Power-supply cords should be routed so that they are not likely to be walked on or pinched by items placed upon or against them, paying particular attention to the point they exit from the unit.
- Cleaning -The fixture should be cleaned only as recommended by the manufacturer. See page 18 for cleaning details.
- Heat -The appliance should be situated away from heat sources such as radiators, heat registers, stoves, or other appliances (including amplifiers) that produce heat.
- The fixture should be serviced by qualified service personnel when:
  - A. The power-supply cord or the plug has been damaged.
  - B. Objects have fallen, or liquid has been spilled into the fixture.
  - C. The fixture has been exposed to rain or water.
  - D. The fixture does not appear to operate normally or exhibits a marked change in performance.
  - E. The fixture has fallen and/or subjected to extreme handling.

3D Vision Plus		3 Channel Mode
Channel	Value	Function
1	0 - 255	RED 0% - 100%
2	0 - 255	GREEN 0% - 100%
3	0 - 255	BLUE 0% - 100%

3D Vision Plus		9 Channel Mode
Channel	Value	Function
1	0 - 255	RED 1 0% - 100%
2	0 - 255	GREEN 1 0% - 100%
3	0 - 255	BLUE 1 0% - 100%
4	0 - 255	RED 2 0% - 100%
5	0 - 255	GREEN 2 0% - 100%
6	0 - 255	BLUE 2 0% - 100%
7	0 - 255	RED 3 0% - 100%
8	0 - 255	GREEN 3 0% - 100%
9	0 - 255	BLUE 3 0% - 100%

<b>Channel</b>	<b>Value</b>	<b>Function</b>
1	0 - 255	RED 1 0% - 100%
2	0 - 255	GREEN 1 0% - 100%
3	0 - 255	BLUE 1 0% - 100%
4	0 - 255	RED 2 0% - 100%
5	0 - 255	GREEN 2 0% - 100%
6	0 - 255	BLUE 2 0% - 100%
7	0 - 255	RED 3 0% - 100%
8	0 - 255	GREEN 3 0% - 100%
9	0 - 255	BLUE 3 0% - 100%

**CHANNEL 13 MODE CONTINUED ON THE NEXT PAGE**



Channel	Value	Function
10	0	COLOR MACROS OFF
	1 - 7	ALL RED (STATIC)
	8 - 14	ALL GREEN (STATIC)
	15 - 21	ALL BLUE (STATIC)
	22 - 28	ALL YELLOW (STATIC)
	29 - 35	ALL CYAN (STATIC)
	36 - 42	ALL MAGENTA (STATIC)
	43 - 49	RGB CHASE
	50 - 57	BLUE, CYAN, & MAGENTA CHASE
	58 - 64	MAGENTA, YELLOW, & WHITE CHASE
	65 - 71	YELLOW & MAGENTA CHASE
	72 - 78	BLACK & BLUE CHASE
	79 - 85	RGB FADE
	86 - 92	RGBYCMW FADE
	93 - 99	YELLOW & BLUE CHASE
	100 - 106	RED & CYAN CHASE
	107 - 113	GREEN & MAGENTA CHASE
	114 - 120	ALL COLORS RANDOM
	121 - 127	SOUND ACTIVE RED
	128 - 134	SOUND ACTIVE GREEN
	135 - 141	SOUND ACTIVE BLUE
	142 - 148	SOUND ACTIVE YELLOW
	149 - 155	SOUND ACTIVE CYAN
	156 - 162	SOUND ACTIVE MAGENTA
	163 - 169	SOUND ACTIVE RGB CHASE
	170 - 177	SOUND ACTIVE BLUE, CYAN, & MAGENTA CHASE
	178 - 184	SOUND ACTIVE MAGENTA, YELLOW & WHITE CHASE
	185 - 191	SOUND ACTIVE YELLOW & MAGENTA CHASE
	192 - 198	SOUND ACTIVE BLACK & BLUE CHASE
	199 - 205	SOUND ACTIVE RGB FADE
	206 - 212	SOUND ACTIVE RGBYCMW FADE
	213 - 219	SOUND ACTIVE YELLOW & BLUE CHASE
	220 - 226	SOUND ACTIVE RED & CYAN CHASE
	227 - 233	SOUND ACTIVE GREEN & MAGENTA CHASE
	234 - 240	SOUND ACTIVE ALL COLORS
	241 - 255	NO FUNCTION

**CHANNEL 13 MODE CONTINUED ON THE NEXT PAGE**

Channel	Value	Function
11	0 - 255 0 - 255	MACRO SPEED/SOUND SENSITIVITY MACRO SPEED SLOW - FAST SOUND SENSITIVITY LESS - MORE
12	0 - 31 32 - 63 64 - 95 96 - 127 128 - 159 160 - 191 192 - 223 224 - 255	STROBING/LEDS ON/OFF LED OFF LED ON STROBING SLOW - FAST LED ON PULSE STROBING SLOW - FAST LED ON RANDOM STROBING SLOW - FAST LED ON
13	0 - 255	MASTER DIMMER 0% - 100%

Menu	Option	Function	Remark
<b>Addr</b>	A001-A512	Set DMX Address	Default set to " A001"
<b>Node</b>	CH03	3CH Mode (DMX)	Default set to " CH09"
	CH09	9CH Mode (DMX)	
	CH13	13CH Mode (DMX)	
<b>Nodn</b>	blac	No DMX signal , blac	Default set to " HOLD"
	Auto	No DMX signal , Auto	
	Soun	No DMX signal , Soun	
	Hold	No DMX signal , Hold	
<b>SLAu</b>	SLAu	Slave	Default set to " SLAu "
	NASt	Master	
<b>Auto</b>	RAND	16 built-in effects automatically loop	Default set to " rand "
	Au01-Au16	Specifies to play a built-in effect	
<b>SPEd</b>	SP01-SP16	16 speed grade	Default set to " SP08"
<b>Soun</b>	RAND	16 built-in effects automatically loop	Default set to " rand "
	Su01-Su16	Specifies to play a built-in effect	
<b>Sobn</b>	OFF	sound scene shut off	Default set to " OFF"
	ON	sound scene remain on	
<b>SEns</b>	1-30	30 Sound Sensitivity grade	Default set to " 15"
<b>ConF</b>	Con1-Con6	6 different pixel partitions (See Page 14 For Diagram)	Default set to " Con1"
<b>dIEr</b>	dI01-dI16	16 brightness grade	Default set to " dI16"

**System Menu:** When making adjustments press **ENTER** to confirm your setup then press and hold the **MENU** button for at least 3 seconds. To exit without making any adjustments press the **MENU** button. The display will lock after 30 seconds, press the **MENU** button for 3 seconds to unlock.

**Please refer to the system menu on page 10 for detailed layout.**

**DMX Address** - With this function, you can adjust the desired DMX-address via the Control Board.

1. Press the MENU button so that “**Addr**” is displayed, and press ENTER.
2. Press the UP or DOWN buttons The current DMX address will now be displayed.
3. Use the UP or DOWN buttons to adjust the DMX address.
4. Press ENTER to confirm or press MENU button to return to the main menu.

**DMX Channel Mode** - With this function, you can see the how many DMX channels the fixture has.

1. Press the MENU button so that “**Node**” is displayed, and press ENTER.
2. The current DMX channel mode will be displayed. The default DMX channel mode is 9 channel mode. Use the UP or DOWN buttons to scroll to your desired DMX channel mode, and press ENTER to set it.
3. Press the MENU button to exit and return to the main menu with no changes.

**DMX State** - This mode can be used as a precaution mode, that in case the DMX signal is lost, interrupted, or power is lost, the operating mode chosen in this setup is the running mode the fixture will go into when the DMX signal is lost. **Note: Hold is the default setting.**

1. Press the MENU button so that “**Nodn**” is displayed, then press ENTER.
2. Press the UP or DOWN buttons until “**DMX State**” is displayed, and press ENTER. Use the UP and DOWN buttons to switch between the two modes; Blackout or Hold. Press the ENTER button to make your selection.
  - **blac** - If the DMX signal is lost or interrupted, the unit will automatically go into stand by mode.
  - **Auto** - If the DMX signal is lost or interrupted, the unit will automatically go into auto program mode.
  - **Soun** - If the DMX signal is lost or interrupted, the unit will automatically go into sound active mode.
  - **Hold** - If the DMX signal is lost the fixture will stay in the last DMX setting. If power is applied and this mode is set, the unit will automatically go into the last DMX set up. This is the default setting.
3. Press the MENU button to return to the main menu.

**Master-Slave Set Up** - With this function, you can see the how many DMX channels the fixture has.

1. Press the MENU button so that “**SLAu**” is displayed, and press ENTER.
2. The current setting will be displayed. Use the UP or DOWN buttons to toggle between “Slave” (**SLAu**) or “Master” (**NASt**), and press ENTER to select your setting.
3. Press the MENU button to exit and return to the main menu with no changes.

**Auto Program** - With this function, you can run an internal program. Make sure the DMX state is set to “Auto” as well.

1. Press the MENU button so that “**Auto**” is displayed, then press ENTER.
2. Press the UP or DOWN buttons until “**RAND**” is displayed, and press ENTER. The program will now run.
3. If you would like to select a program, press the UP or DOWN buttons until “**AuXX**” is displayed. “XX” represents the current program that is displayed. Use the UP or DOWN buttons to find your desired program. There are 16 programs to choose from.
4. Press ENTER to confirm your selection or press the MENU button to return to the main menu.
5. To adjust the program speed, press the MENU button until “**SPed**” is displayed and press ENTER. Use the UP or DOWN buttons to adjust the program speed to your desire and press ENTER to confirm.

**Sound Active Mode** - With this function, you can activate sound active mode.

1. Press the MENU button so that “**Soun**” is displayed, and press ENTER.
2. Press the UP or DOWN buttons until “**RAND**” is displayed, and press ENTER. The program will now run.
3. If you would like to select a program, press the UP or DOWN buttons until “**SuXX**” is displayed. “XX” represents the current program that is displayed. Use the UP or DOWN buttons to find your desired sound active program. There are 16 programs to choose from.
4. Press ENTER to confirm your selection or press the MENU button to return to the main menu.
5. To adjust the sound sensitivity, press the MENU button until “**SEns**” is displayed and press ENTER. Use the UP or DOWN buttons to adjust the sensitivity to your desire and press ENTER to confirm.

**Pixel Configuration** - With this function, you are able to change the pixel configuration. There are 6 configurations to choose from. Please see page 14 for the different configurations.

1. Press the MENU button so that “**ConF**” is displayed, and press ENTER.
2. The current configuration will now be displayed. Use the UP and DOWN buttons to scroll through the different configurations until you find your desired one.
3. Press ENTER to confirm your selection or press the MENU button to return to the main menu.

**Brightness Adjustment** - With this function, you are able to change the output intensity.

1. Press the MENU button so that “**dIEr**” is displayed, and press ENTER.
2. The current setting will now be displayed. Use the UP and DOWN buttons to adjust the brightness to your liking.
3. Press ENTER when you are finished or press the MENU button to return to the main menu.

**Control Using a DMX Controller:**

1. The 3D Vision has 3 DMX channel modes; a 3 channel mode, 9 channel mode, and 13 channel mode. See pages 6-9 for detailed description of the DMX values and traits. See the page 15 for the pixel configurations.
2. To set your desired DMX channel mode and DMX address follow the instructions on page 11.
3. When connecting to a DMX controller or using MyDMX, you will need to use a RJ45 to 3pin adapter. This can be purchased through ADJ.
4. Connect the first unit to the adapter and then connect to either your DMX controller or MyDMX.
5. Follow the DMX traits on pages 6-9 to control your unit.

**DO NOT** daisy-chain more than 32 Panels when connecting directly to a DMX controller.

**Master-Slave Configuration:**

This function will allow you to link units together to run in a Master-Slave set-up. In a Master-Slave set up one unit will act as the controlling unit and the others will react to the controlling units built-in programs. Any unit can act as a Master or as a Slave however, only one unit can be programmed to act as the “Master.”

**Master-Slave Connections and Settings:**

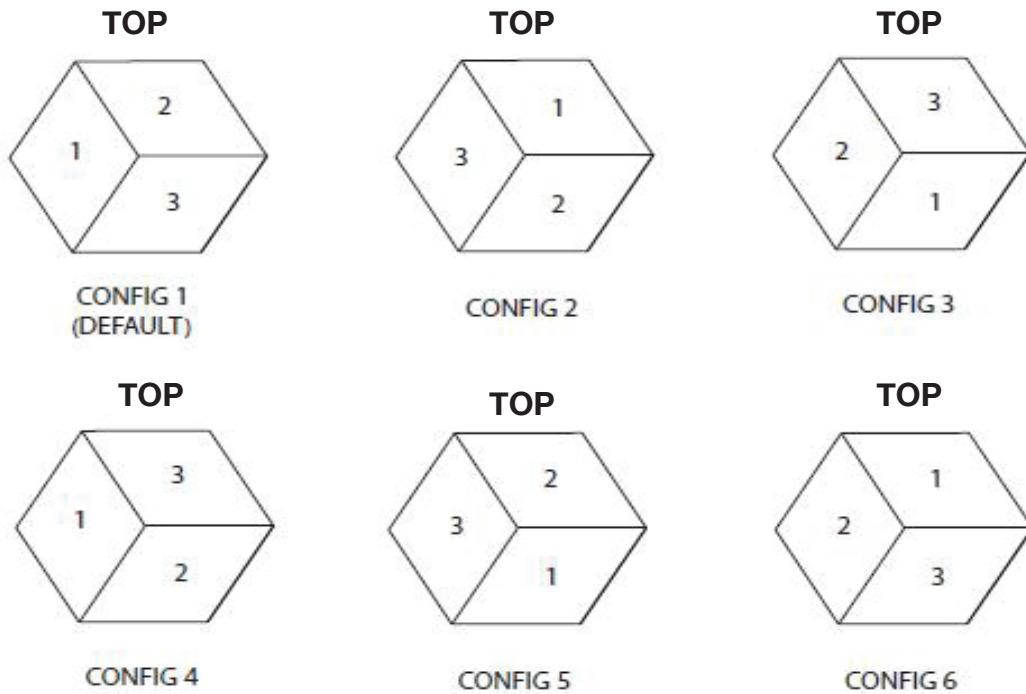
1. Daisy chain your units via the etherCON connections located on the side of the unit.
2. Connect the first “Slave” unit to the “Master.”
3. Press the MENU button until “SLAv” is displayed and press ENTER. For the “Master” unit press the UP or DOWN buttons until ‘NASt’ is displayed and press ENTER. This now the “MASTER” unit.
3. Set the “Master” unit to your desired mode of operation. On the “Slave” unit’s press the MENU button until “SLAv” is displayed and press ENTER. Press the UP or DOWN buttons until ‘SLAv’ is displayed and press ENTER. The “Slave” unit(s) will now follow the “Master”.

*With this feature you can connect the fixtures to one another using the IEC input and output sockets. The maximum that can be connected is 130 fixtures @ 120V and 250 fixtures @ 240V. After the maximum connected fixtures you will need to use a new power outlet.*

**NOTE: USE CAUTION WHEN POWER LINKING OTHER FIXTURES TO THE 3D VISION PLUS AS THE POWER CONSUMPTION OF OTHER LIGHTING FIXTURES WILL VARY!**

In the default configuration (**CONFIG 1**), PIXEL #1 is located at the top section of the unit. Look for the word **TOP** printed on the backside to determine the top section.

To change the position of PIXEL #1, select one the pixel configurations (1-6) in the system menu. See illustration below for the pixel configuration layout.



When installing the unit, the trussing or area of installation must be able to hold 10 times the weight without any deformation. When installing the unit must be secured with a secondary safety attachment, e.g. included safety cable. Never stand directly below the unit when mounting, removing, or servicing the unit.

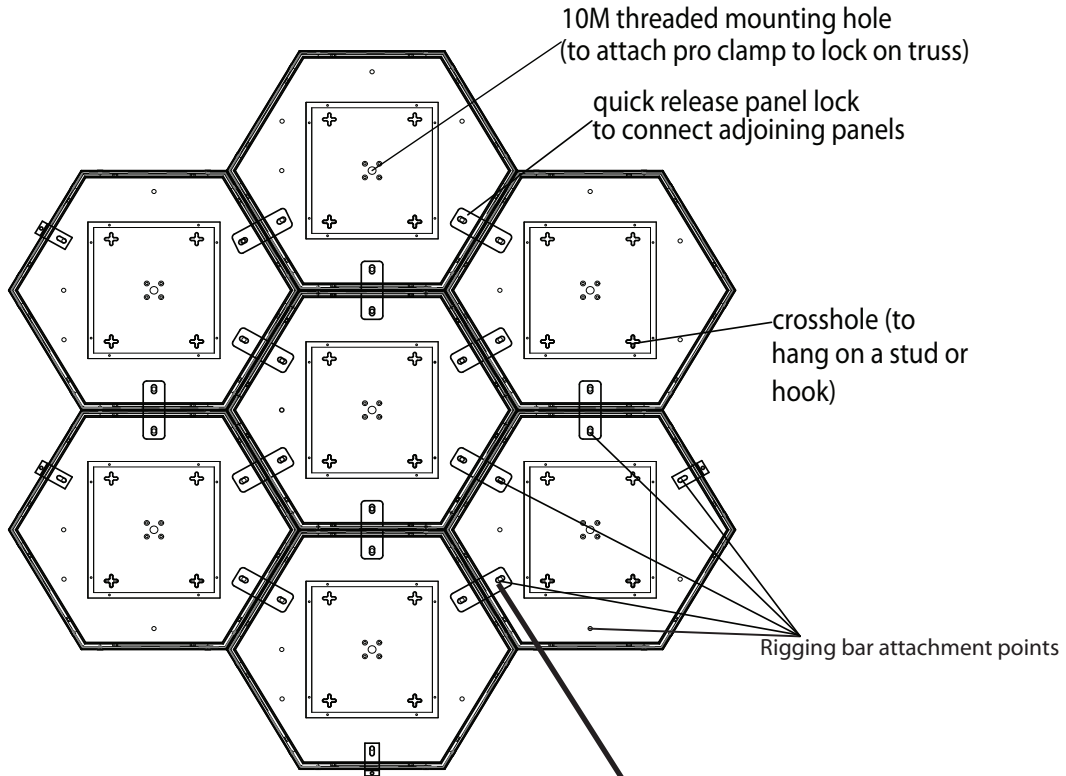
Overhead mounting requires extensive experience, including calculating working load limits, installation material being used, and periodic safety inspection of all installation material and unit. If you lack these qualifications, do not attempt the installation yourself.

The installation should be checked by a skilled person once a year.

To connect your 3D Visions to one another you can use a quick release panel lock (sold separately). To use the quick release panel lock simply squeeze the ends of the quick release panel locks inwards and attach to one of the six outer rigging bar attachment points. You can use a pro clamp with 10M bolt attached to the rear middle of the unit (as seen below) to attach to trussing. See the next page for all rigging areas and quick release connections.

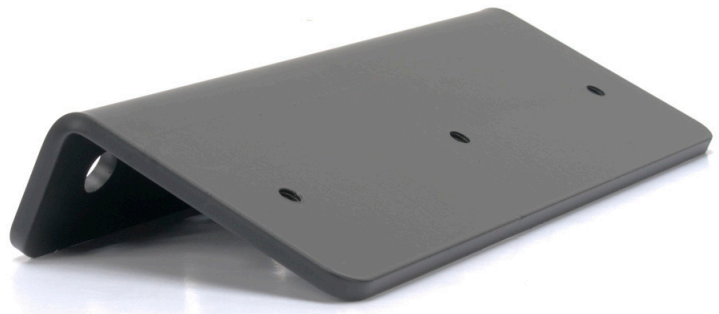
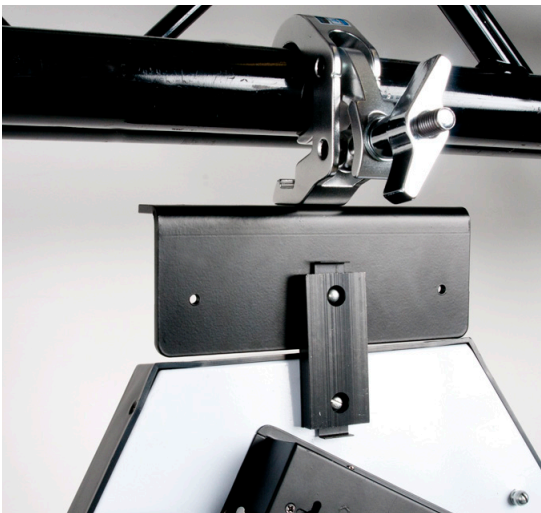




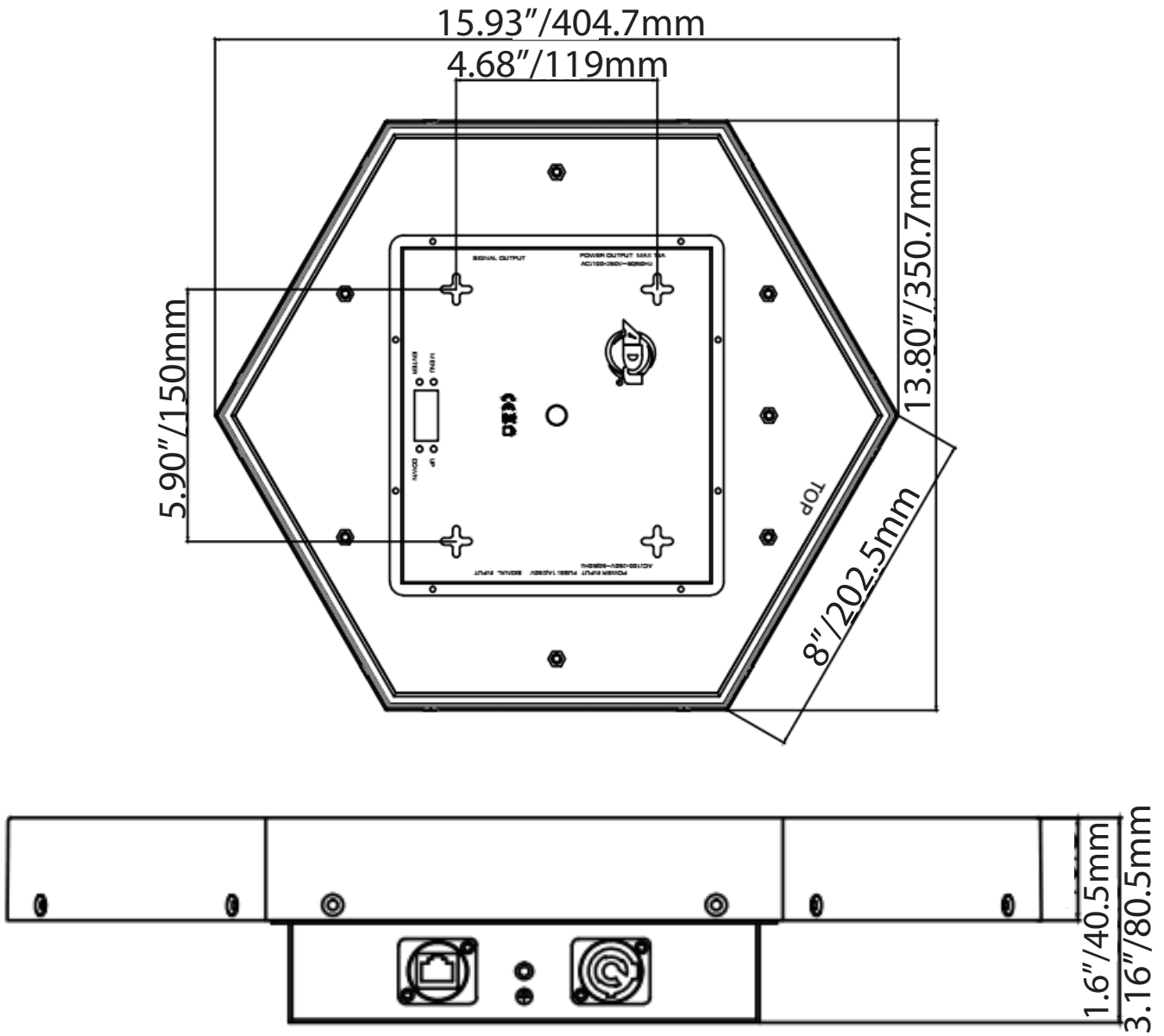


PL Quick Release: **SKU# 3DV175**

Quick Release panel lock is used to connect the units to one another. See page 15.



Hanging Bracket: **SKU# 3DV149**



## 3D Vision Plus

## Fuse Replacement

Disconnect the unit from its power source. Remove the power cord from the unit. Once the cord has been removed, you will find that the fuse holder is located next to the power socket. Use a philips-head screw driver to unscrew and remove the fuse holder. Remove the bad fuse and replace with a new one.

## 3D Vision Plus

## Trouble Shooting

Listed below are a few common problems the user may encounter, with solutions.

### ***Unit not responding to DMX:***

1. Check that the DMX cables are connected properly and are wired correctly (pin 3 is “hot”; on some other DMX devices pin 2 may be ‘hot’). Also, check that all cables are connected to the right connectors; it does matter which way the inputs and outputs are connected.

### ***Unit does not respond to sound:***

1. Quiet or high pitched sounds will not activate the unit.
2. Make sure that Sound Active mode is activated.

## 3D Vision Plus

## Cleaning

Due to fog residue, smoke, and dust cleaning the internal and external optical lenses must be carried out periodically to optimize light output.

1. Use normal glass cleaner and a soft cloth to wipe down the outside casing.
2. Clean the external optics with glass cleaner and a soft cloth every 20 days.
3. Always be sure to dry all parts completely before plugging the unit back in.

Cleaning frequency depends on the environment in which the fixture operates (i.e. smoke, fog residue, dust, dew).

**MANUFACTURER'S LIMITED WARRANTY**

- A. ADJ Products, LLC hereby warrants, to the original purchaser, ADJ Products, LLC products to be free of manufacturing defects in material and workmanship for a prescribed period from the date of purchase (see specific warranty period on reverse). This warranty shall be valid only if the product is purchased within the United States of America, including possessions and territories. It is the owner's responsibility to establish the date and place of purchase by acceptable evidence, at the time service is sought.
- B. For warranty service you must obtain a Return Authorization number (RA#) before sending back the product—please contact ADJ Products, LLC Service Department at 800-322-6337. Send the product only to the ADJ Products, LLC factory. All shipping charges must be pre-paid. If the requested repairs or service (including parts replacement) are within the terms of this warranty, ADJ Products, LLC will pay return shipping charges only to a designated point within the United States. If the entire instrument is sent, it must be shipped in its original package. No accessories should be shipped with the product. If any accessories are shipped with the product, ADJ Products, LLC shall have no liability whatsoever for loss of or damage to any such accessories, nor for the safe return thereof.
- C. This warranty is void if the serial number has been altered or removed; if the product is modified in any manner which ADJ Products, LLC concludes, after inspection, affects the reliability of the product; if the product has been repaired or serviced by anyone other than the ADJ Products, LLC factory unless prior written authorization was issued to purchaser by ADJ Products, LLC; if the product is damaged because not properly maintained as set forth in the instruction manual.
- D. This is not a service contract, and this warranty does not include maintenance, cleaning or periodic check up. During the period specified above, ADJ Products, LLC will replace defective parts at its expense with new or refurbished parts, and will absorb all expenses for warranty service and repair labor by reason of defects in material or workmanship. The sole responsibility of ADJ Products, LLC under this warranty shall be limited to the repair of the product, or replacement thereof, including parts, at the sole discretion of ADJ Products, LLC. All products covered by this warranty were manufactured after August 15, 2012, and bear identifying marks to that effect.
- E. ADJ Products, LLC reserves the right to make changes in design and/or improvements upon its products without any obligation to include these changes in any products theretofore manufactured.

No warranty, whether expressed or implied, is given or made with respect to any accessory supplied with products described above. Except to the extent prohibited by applicable law, all implied warranties made by ADJ Products, LLC in connection with this product, including warranties of merchantability or fitness, are limited in duration to the warranty period set forth above. And no warranties, whether expressed or implied, including warranties of merchantability or fitness, shall apply to this product after said period has expired. The consumer's and/or Dealer's sole remedy shall be such repair or replacement as is expressly provided above; and under no circumstances shall ADJ Products, LLC be liable for any loss or damage, direct or consequential, arising out of the use of, or inability to use, this product.

This warranty is the only written warranty applicable to ADJ Products, LLC Products and supersedes all prior warranties and written descriptions of warranty terms and conditions heretofore published.

**MANUFACTURER'S LIMITED WARRANTY PERIODS:**

- **Non L.E.D. Lighting Products = 1-year (365 days) Limited Warranty** (Such as: Special Effect Lighting, Intelligent Lighting, UV lighting, Strobes, Fog Machines, Bubble Machines, Mirror Balls, Par Cans, Trussing, Lighting Stands etc. excluding LED and lamps)
- **Laser Products = 1 Year (365 Days) Limited Warranty** (excluding laser diodes which have a 6 month limited warranty)
- **L.E.D. Products = 2-year (730 days) Limited Warranty** (excluding batteries which have a 180 day limited warranty). **Note: 2 Year Warranty only applies to purchases within the United States.**
- **StarTec Series = 1 Year Limited Warranty** (excluding batteries which have a 180 day limited warranty).
- **ADJ DMX Controllers = 2 Year (730 Days) Limited Warranty**

**Model: 3D Vision Plus**

LEDs:	72 x 0.164W 3-in-1 LEDs
Working Position:	Any safe working position
Voltage:	100V-250V, 50/60Hz
Power Draw:	13W (Full On)
Multiple Unit Power Link:	130 Units Max. (120V) 250 Units Max. (240V)
Beam Angle:	180 Degrees
Weight:	6 lbs./ 2.74Kgs.
Dimensions:	3.16" (L) x 15.93" (W) x 13.80" (H) 80.5 (L) x 404.7 (W) x 350.7 (H) mm
Warranty:	2 Year (730 days)

**Please Note:** Specifications and improvements in the design of this unit and this manual are subject to change without any prior written notice.

**Follow Us On:**



[facebook.com/americanadj](https://facebook.com/americanadj)

[twitter.com/americanadj](https://twitter.com/americanadj)

[youtube.com/adjlighting](https://youtube.com/adjlighting)

ADJ Products, LLC  
6122 S. Eastern Ave. Los Angeles, CA 90040 USA  
Tel: 323-582-2650 / Fax: 323-725-6100  
Web: [www.adj.com](http://www.adj.com) / E-mail: [info@americanadj.com](mailto:info@americanadj.com)

A.D.J. Supply Europe B.V.  
Junostraat 2  
6468 EW Kerkrade  
Netherlands  
[service@adjgroup.eu](mailto:service@adjgroup.eu) / [www.adj.eu](http://www.adj.eu)  
Tel: +31 45 546 85 00 / Fax: +31 45 546 85 99