

WIRELESS



STAGE X



Breakthrough Full Duplex Wireless:

COMSTAR full duplex wireless are designed specifically for production teams that need instantaneous, "hands free" voice communications. These revolutionary intercoms are not voice activated and there is no delay when transmitting. The system enhances jobsite productivity and safety by allowing up to eight users to talk simultaneously just like on a regular telephone.

The COMSTAR Advantage

Outstanding Range

Full duplex communication up to 400 yards in any direction from Com-Center.

Dual Channel with Conferencing

Two groups of four users communicate separately or all together in conference mode.

Digital, Full Duplex Voice

Dect frequency band (1900 mhz) is reserved by FCC for "PCS" voice communication only.

Expandable

Start small, add field programmable headsets. Up to 8 total.

Totally Portable

AC wall plug, rechargeable batteries (6 hrs), and AA disposable battery sled included.

Simple / Instant Setup

Self tuning, no antenna required.

No FCC License Required.

USA, Canada, Japan, Europe & Australia certified.



Com-Center This centralized base transceiver includes powerful internal antennas that relay digital signals between everyone in the talk net.

Li-On Batteries snap into the headset or COMPAK radio, and operate up to 10 hours.



Breakthrough Duplex Wireless Systems

Available in Two Popular Formats:

COMSTAR "All-in-One" duplex headsets feature miniaturized wireless circuitry and antenna built into the earcup. This provides ease of operation as well as outstanding full duplex communications. No beltpack required!

- Weighs only 12 oz.
- Mic mute button installed on earcup.
- On / Off, Volume Control on earcup - silicone sealed.
- Mic adjusts left or right.



COMSTAR SINGLE
Single Ear Radio/Headset



COMSTAR DOUBLE
Dual Ear Radio/Headset



COMSTAR XTREME
Hardhat Radio/Headset

COMPAK beltpacks allow users to select the best headset accessory for their specific application. This is an outstanding benefit for production teams operating in low noise environments that prefer lightweight headsets.



ULTRALITE CS
Midweight headset for COMPAK



MONARCH CS
Low profile rugged backband



CYBER CS
Lightweight headset for COMPAK



COMPAK
Full Duplex Beltpack

COMSTAR is offered in three distinct series on the following pages.



XT Series: Dual Channel Full Duplex for up to 8:

When your job calls for split second communication, look to COMSTAR wireless to provide instantaneous full duplex voice contact. Whether you select heavy duty self contained headsets or COMPAK beltpack transceivers with lightweight headsets, COMSTAR hands-free wireless systems come through loud and clear!

Range Up to
800 Yards!



Multi-port charger and
batteries incl.

Padded case included with complete systems for safe storage & transport.

Also Available:
Additional Padded Case



XT Series



Create a Customized Setup:

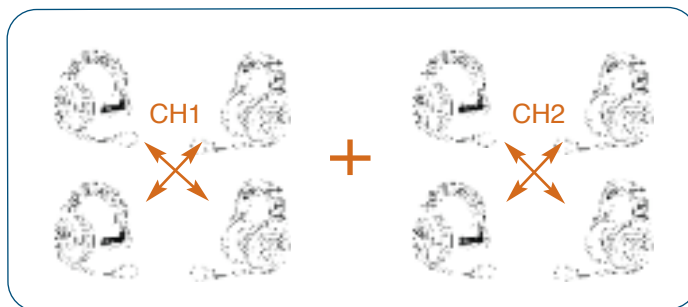
Select up to eight roaming wireless transceivers/headsets with one XT Dual Channel Com-Center. Choose any combination of wireless headsets to create a completely customized intercom.

The COMSTAR XT Series

Supports two sets of four people talking separately.

Conference switch links all eight headsets.

Dual Channel System

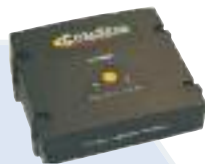


Build a System:

XT Com-Center
Dual channel base station.

Supports up to 8 Wireless
From list at right.

Included: Multi-port Charger,
Batteries



Individual Components:



COMSTAR SINGLE
Single Ear Radio/Headset



COMSTAR DOUBLE
Dual Ear Radio/Headset



COMSTAR XTREME
Hardhat Radio/Headset



COMPAK
Lightweight Beltpack



ULTRALITE CS
Midweight Headset for COMPAK

MONARCH CS
Low Profile Headset for COMPAK



CYBER CS
Lightweight Headset for COMPAK



Flex Max Series

FLEX MAX Series: Hybrid Wired & Wireless Full Duplex Intercom for up to 12.

The COMSTAR Flex Max is a hybrid full duplex system that features both hard-wired headsets and wireless capability built in the same compact Com-Center.

This series expands the capacity of standard eight person COMSTAR systems through addition of up to four Max3G wired headsets that plug into the Flex Max Com-Center.

Create a customized Wireless/Wired by simply adding stationary and roaming users to the Flex Max Com-Center.



FLEX MAX Com-Center

Dual Ch base with wired XLR.

Add up to 4 Wired Headsets

Max 3G Single \$249

Max 3G Double \$280

Add up to 8 Wireless

See page 2 for headset options.

Included: Multi-port Charger, Batteries

DELUXE PADDED CASE

incl. with Complete Systems



Flex Max Com-Center includes XLR connectors on the front panel for up to four wired headsets.

Max3G Single
Double.





Interface Series

INTERFACE SERIES: Expand the Capacity of Your Wired Partyline.

The COMSTAR Interface series includes an XT-Plus Com-Center and a software controlled Interface. The Interface plugs into the port on the rear of the Com-Center and the wired system.

Signal level adjustments create a seamless audio link allowing up to 8 wireless headsets to communicate with the wired intercom.



Signal level adjustments

Interface plugs into wall jack or rack mounted power console.



Roaming wireless users can communicate with wired headsets hands free, simultaneously, and without interconnecting wires.

XT-Plus INT

Dual Ch Com-Center with interface.

Add up to 8 wireless

See page 2 for headset options.

Included: Multi-port Charger, Batteries

DELUXE PADDED CASE

incl. with Complete Systems



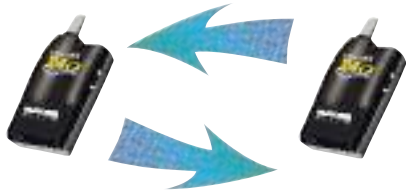
Simultalk 24G

The Simultalk 24G is a breakthrough full duplex wireless that provides hands free, two-way voice communications with no base station. This revolutionary intercom is not voice activated and there are no buttons to push. To operate simply turn the radios on, and talk, exactly like on a wired system.

With an operating range of up to 150 yards the Simultalk 24G is an affordable solution for people that need to communicate and work with their hands at the same time.

SIMULTALK WORKS IN PAIRS

Simultalk transceivers send & receive messages concurrently utilizing two different frequencies. This full duplex format allows partners to talk simultaneously without pushing buttons.



Simultalk
24G



Slimline
Single

- Frequency 2.4 GHz
- Battery Life 5 hours transmit, 10 hrs standby
- No License Needed

The Simultalk 24G-2:

Users communicate hands free, with no buttons to push.
Customize the system by choosing from Eartec's variety of headsets.

Simultalk 24G-2/Slimline
Two Person Setup.

(2) Simultalk Radios
(2) Slimline Headsets
Padded Case, Rechargeable Batteries & Charger Incl.



Customize:



Cyber 24G

Discreet Featherweight



The Monarch 24G

Lightweight Headset



Slimline Double 24G

Midweight Single Ear



ProLine Single & Double

Deluxe Pro Audio



Max3G Single & Double

Comfortable Full Earcup

Simultalk 24G is offered in two additional series on the following page.



Simultalk 24G

4-Man System

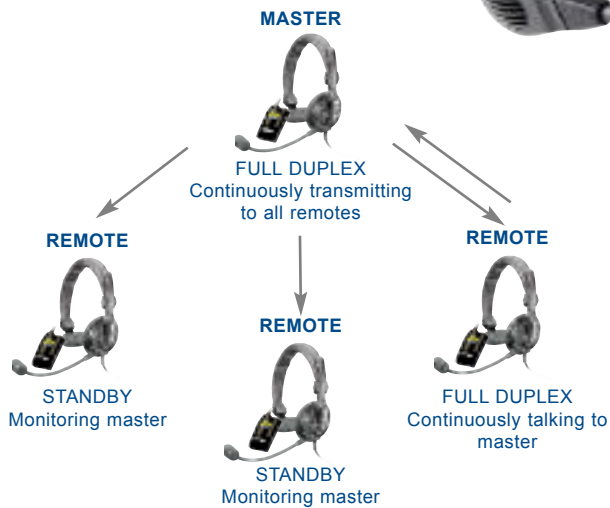
Simultalk 24G Pro Series: A Multi-station Team Communication System.

Each intercom provides the master hands free voice contact with an unlimited number of remote stations. All remotes continuously monitor the master. One at a time, remote users can switch from "Standby" (listen only) to continuous talk operation.

Simultalk 24G

ProLine Single

How it Works:



Simultalk 24G-4/ProLine
Four Person Setup (shown left).

(4) Simultalk Radios (4)
ProLine Headsets
Padded Case, Rechargeable Batteries & Charger Incl.

See additional headset options page 8.

Hands Free, Full Duplex Systems

Add to Your Intercom

The SLTi interface: Add Duplex Wireless Headsets.

Add full duplex wireless headsets to most popular wired intercoms. Simultalk 24G master transceiver, interface module and remote Simultalk radio with headset included.

The Remote wireless user communicates with the wired party line in a full duplex simultaneous talk format just as though they were connected with an actual cable.

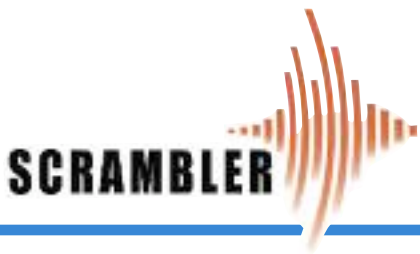


Interface plugs into wall jack or rack mounted power console

SLTi Interface
One Person Setup

(1) Simultalk 24G Master Radio (1)
Wired Interface Assembly (1)
Simultalk 24G Remote Radio (1)
Proline Headset
Padded Case, Rechargeable Batteries & Charger Incl.

See additional headset options page 8.



Eartec Scrambler UHF wireless systems provide crystal clear voice communications to production teams on the move.

All Scrambler UHF operate in a simplex mode, When one person in a group transmits the message is received by everyone. An unlimited number of transceivers can operate on the same frequency, and the system can also be utilized as a dual channel intercom with switching.

The Scrambler is an affordable sound solution for any "on location" venue - even where users need to communicate between buildings or through walls.



Inline PTT

Simply select the number of radios that you need along with any combination of headsets. Eartec will customize your system and package it for delivery in a padded case.



FEATURES

- Professional UHF Transceiver
- 14 UHF Channels Installed
- 38 Privacy Codes Block Interference
- Range Up to 1 Mile
- Dimensions 2"w x 1"d x 3.5"h
- Weight 7 oz
- Rechargeable NiMH Battery
- Battery Life 8 Hours

Scrambler UHF



The UltraLite PTT

Midweight Headset
 Combines comfort & durability
 Mic adjustable to left or right side

Two Person Setup

(2) Scrambler UHF Radios
 Ultralite PTT Headsets
Padded Case, Rechargeable Batteries & Individual Chargers Included.

Also Available:
 Six Port Charger
 SC-6Ch .



Rugged Simplex Systems

Customize: Select the best headset accessory for your particular application.

The SST

"Secret Service Type"

- Clear audio tube w/ earbud
- Lapel microphone clip w/ PTT



Cyber PTT

- Discreet Featherweight
- Lightweight backband
- Comfortable unisex fit



The Monarch PTT

Lightweight Headset

- Lightweight backband
- Comfortable unisex fit



ProLine Single, Double PTT

Deluxe Pro Audio

- Large cushion surrounds ear
- Pro audio style



Max3G Single, Double PTT

Comfortable Full Earcup

- Deluxe padding, noise cancelling
- Mic adjustable to left or right side



Eartec TCS Wired series are no nonsense intercoms that provide an open line of communication and an extra measure of coordination to production teams.

The TCS 4000 is a base package that includes power station, headsets and cables. You can easily modify this system to meet your exact needs by adding headsets, cables, splitters, etc. Eartec will help you design a customized intercom and furnish a price quote.



TCS 4000
Four Person Intercom

FEATURES

- High Impact ABS Power Station
- Volume Control on All Headsets
- Double Jacket PVC Floor Cable with XLR Connectors
- Dual Channel System Available
- AC Power and long-life lantern battery included

- Includes:
- (1) Power Station
 - (4) Ultra Headsets
 - (2) 100' Floor Cables
 - (1) 50' Floor Cable
 - (1) 25' Floor Cable
 - AC Adapter
 - Lantern Battery

Additional Components:

Floor Cables



Ultra Double
Ultra Single

No beltpack required.



Cable Splitter



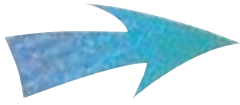
BP-101 Beltpack

Interfaces all other Eartec headsets to the TCS system.



EARTEC Wired Headsets

Replacements for Wired Beltpacks



Eartec Manufactures a full line of replacement headsets for use with popular wired production intercoms. Unless otherwise specified they include noise cancelling dynamic microphones and four pin female XLR connectors to mate with your existing beltpack amplifier.

The Cyber This specialty headset is designed to be worn comfortably for an entire work shift. Weighing only 1/2 of an ounce, the Cyber features a slender tension back-band that provides a luxurious unisex fit.



The Monarch The Monarch is manufactured with PBT, the same material used to make automobile bumpers and are built for rough industrial environments. Monarch headsets feature a slender backband that offers a unisex fit.



The Slimline All Slimline headsets feature an internal steel spring headband that can be adjusted to provide the right amount of tension for each user. Extra soft padding ensures they are a pleasure to wear.



The ProLine These midweight models are both comfortable to wear and durable. Deluxe padding makes the ProLine the perfect pro-audio headset.



The Max3G Heavy duty and noise-cancelling, designed to take the hard knocks of any demanding industrial environment. The large earcups and fully adjustable headband feature extra wide, soft padding.



Wireless Specifications

COMSTAR

Standard	DECT6.0 (Digital Enhanced Cordless Telecommunications)
Frequency	1920 ~1930GHz (USA)
Euro Frequency	1880 ~1900GHz (EURO)
Channel Bandwidth	1.728 MHz
Modulation type	GFSK
Transmission speed	1.152 Mbps (Baud rate)
Duplexing	Time Division Duplex (TDD)
Speech encoding	ADPCM / 32kbit/s
RF Accessing	Time Division Multiple Access (TDMA)
Range	400m in open space
Base Power Supply	AC/ adaptor: INPUT 110-240Vac; OUTPUT 9.0Vdc 1000mA
Headset Power Supply	Rechargeable battery: 3.7V/ 1000mAh
Charge Time	initially 6 hours
Operation time	100 hours in standby; 10 hours in talk
Normal condition of use	0 °C to 40 °C
Storage Temperature	-10°C to 60 °C

The Simultalk 24G

Dimensions	2.5" w x 1" d x 4.25" h	Output	50mV/m (FCC Part 15)
Weight	5 oz.	Deviation	30KHz/+-10KHz
Modulation	Frequency Modulation	Modular Distortion	<5%
Tuning	PLL Frequency Synthesizer	Spurious Radiation	>50 dBC
Power	4.8V NiMh Battery, 700 mAH	Sensitivity	<-100dBm @ 12dB SINAD
Battery Life	Standby (70ma)=10 hours	IF Bandwidth	180 KHz
	Communication (150mA)=5 hours	Image Rejection	> 60 dB
Charging Time	150mA/hours fast, 12 hrs for full	Operating Temp	-10 to + 40C
Range	Up to 150 Yards	Switches	Off/Vol, Full?Standby
Antenna	Internal		

Scrambler

Dimensions	2.4" w x 1.5" d x 4" h	Maximum Deviation	< +-5KHz
Weight	5 oz.	Spurious Radiation	< -60dB
Modulation	FM (F3E)	Frequency Stability	+ - 5ppm
Frequency Range	UHF 462-467.7125 MHz	Channels	14 UHF
CTCSS	38 Tones	Operating Voltage	7.2V
Receiving Stability	< 0.2uV	Operating Temp.	-30 to 60 C
Audio Output Power	> 500mW	Operating Mode	Simplex
Output Power	0.38W	FCC License	None Required

Important Warranty Information

Eartec communication systems are warranted from malfunction due to manufacturing defects by the original purchaser for the following periods after date of purchase:

Transceivers

COMSTAR	1 year
Simultalk 24G	6 months
Scrambler UHF	1 year

Headsets

Heavy Duty	1 year
Midweight	6 months
Lightweight	30 days

What is covered:

This warranty covers defects in materials and workmanship in all Eartec products excluding:

(a) Damage from misuse, abuse, or general wear and tear.

(b) Repairs or product modifications by anyone not authorized by Eartec Co.

Returns: Eartec products may be returned for credit or refund only if received in the original packaging and in "as new" condition within 30 days form purchase.

Warranty Service

If you require warranty service for your product within the warranty period, ship your product pre-paid only to Eartec. The end user is responsible for the initial shipping charges. Eartec will pay the return ground shipping charges if the product is covered under the warranty.

General Service

All repair work due to general wear and tear will be performed for the cost of replacement parts, radio retuning and return shipping from the Eartec factory.



Unipessoal, Lda.

vitor.sousa@stagex.pt

Rua dos Arneiros, 54-A

351 917 624 122

1500-060 Lisboa - Portugal