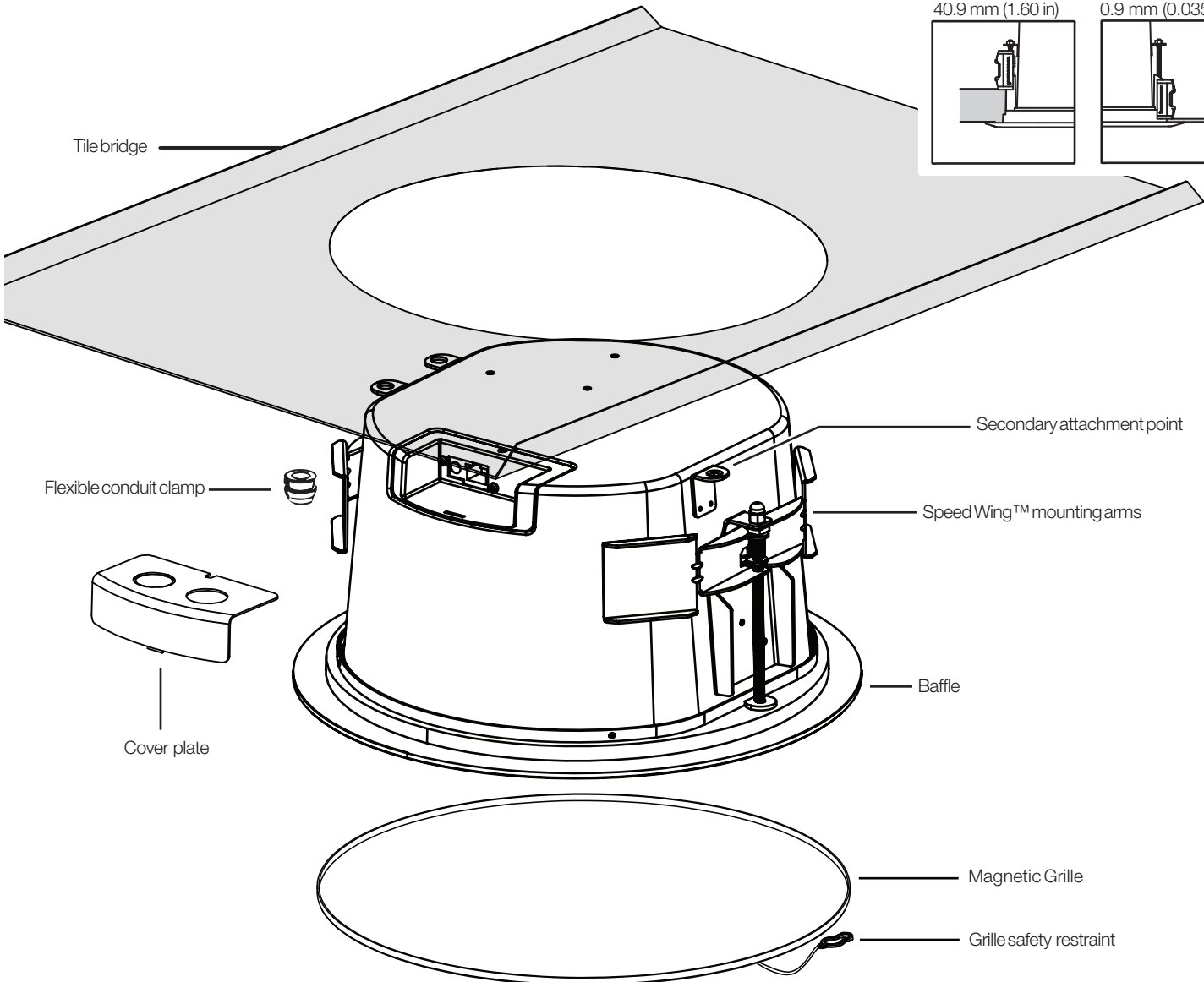
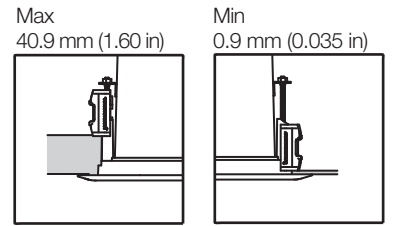


IPD-CM-BGM-II-US Series
IPD-CI Series

Install Instructions For:

IPD-CM52s-BGM-II-US, IPD-CM52-BGM-II-US, IPD-CM62-BGM-II-US, IPD-CM82-BGM-II-US,
IPD-CI52s, IPD-CI52, and IPD-CI62

Ceiling thickness tolerances



Box contents

- 1 Speaker
- 1 Flexible conduit clamp
- 1 Cover plate
- 1 Magnetic Grille

Lenexa, KS | 855-663-5600 | www.soundtube.com

UL Listed 60065

©2024 SoundTube Entertainment, Inc. All rights reserved. PN218-2140 Rev01.23.2025

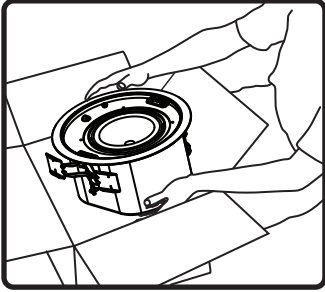
<p>Warning</p> <p>SoundTube speakers must be installed by a professional audio installer/contractor. For safety and for optimum audio performance, installer must follow all directions issued by SoundTube Entertainment.</p> <p>Haut-parleurs SoundTube doivent être installés par un installateur / contracteur de l'audio professionnel. Par mesure de sécurité et pour des performances audio optimales, l'installateur doit suivre toutes les directives émises par SoundTube Entertainment.</p>	<p>Warning</p> <p>Do not spec or install speaker near support beam, ventilation duct or other structure that may interfere with speaker function or dispersion.</p> <p>Ne spécifiez pas ou installer haut-parleur près de poutre de support, une conduite d'aération ou une autre structure qui pourrait interférer avec la fonction haut-parleur ou de dispersion.</p>
---	--

Important Safety Instructions

- 1) Read these instructions.
- 2) Keep these instructions.
- 3) Heed all warnings.
- 4) Follow all instructions.
- 5) Do not use this apparatus near water.
- 6) Clean only with dry cloth.
- 7) Do not block any ventilation openings. Install in accordance with the manufacturer's instructions.
- 8) Do not install near any heat sources such as radiators, heat registers, stoves, or other apparatus (including amplifiers) that produce heat.
- 9) Only use the attachments/accessories specified by the manufacturer.
- 10) Unplug this apparatus during lightning storms or when unused for long periods of time.
- 11) Refer all servicing to qualified service personnel. Servicing is required when the apparatus has been damaged in any way, such as power-supply cord or plug is damaged, the apparatus has been exposed to rain or moisture, does not operate normally, or has been dropped.

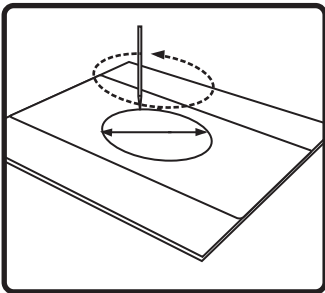
Consignes de sécurité importantes

- 1) Lisez ces instructions.
- 2) Conservez ces instructions.
- 3) Respectez tous les avertissements.
- 4) Suivez toutes les instructions.
- 5) Ne pas utiliser cet appareil près de l'eau.
- 6) Nettoyer seulement avec un chiffon sec.
- 7) Ne pas bloquer les ouvertures de ventilation. Installer conformément aux instructions du fabricant.
- 8) Ne pas installer près de sources de chaleur telles que des radiateurs, registres de chaleur, poêles ou autres appareils (incluant les amplificateurs) qui produisent de la chaleur.
- 9) Utiliser uniquement les fixations / accessoires spécifiés par le fabricant.
- 10) Débranchez cet appareil pendant les orages ou si inutilisé pendant de longues périodes de temps.
- 11) Confiez toute réparation à un personnel qualifié. Une réparation est nécessaire lorsque l'appareil a été endommagé de quelque façon que ce cordon d'alimentation ou la fiche est endommagé, l'appareil a été exposé à la pluie ou à l'humidité, s'il ne fonctionne pas normalement ou s'il est tombé.

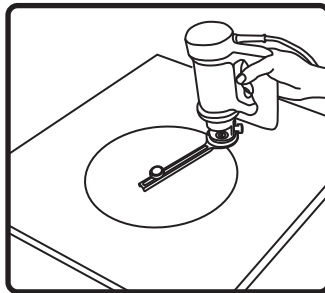


1. Unpack speaker & set
aside grille assembly.

Ceiling preparation - For Tile Ceilings



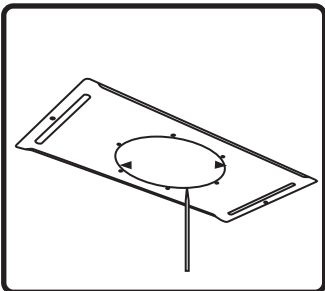
2. Use included tile bridge
to mark cutout in tile.



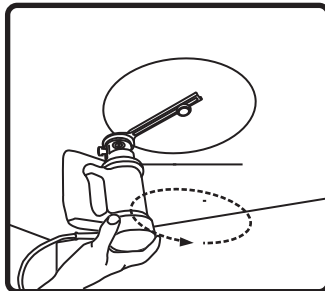
3. Use Rotozip or other tool
to cut hole.

Hole Diameters
Standard BGM Models: 10.50 in / 266.7 mm
CI models: 9.125 in / 231.8 mm

Ceiling preparation - For Sheetrock / gypsum board ceilings



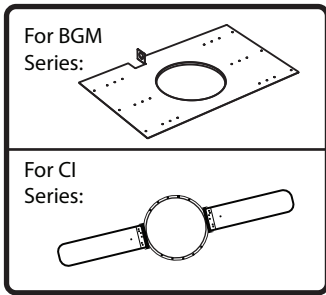
2. Use included tile bridge
to mark cutout in sheetrock.



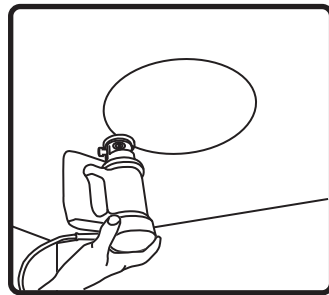
3. Use Rotozip or other tool
to cut hole.

Hole Diameters
Standard BGM Models: 10.50 in / 266.7 mm
CI models: 9.125 in / 231.8 mm

Ceiling preparation - For all other ceiling types

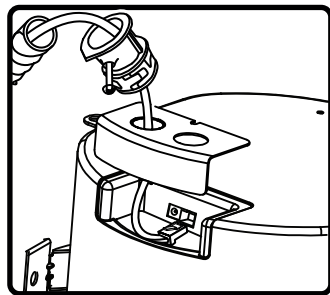


2. Nail or screw bracket to joists. Secure conduit/signal wire away from hole in bracket. Once installed, complete finish work.

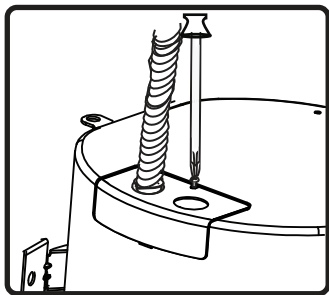


3. Use Rotozip or other tool to cut hole.

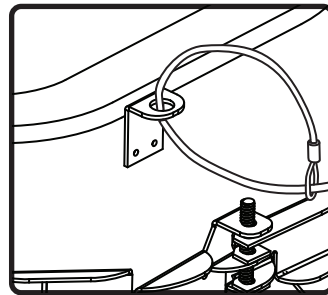
Hole Diameters
Standard BGM Models: 10.50 in / 266.7 mm
CI models: 9.125 in / 231.8 mm



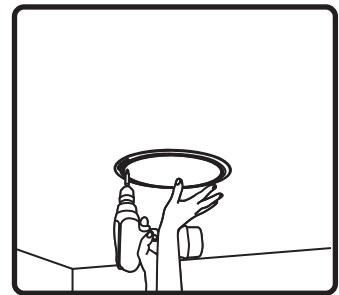
4. Run signal wires through conduit, terminate with RJ45 connector, then plug into speaker. If local power is required at speaker (non-POE installation), connect appropriate DC power supply to barrel connector on speaker input panel. Contact SoundTube for questions about installations requiring local power.



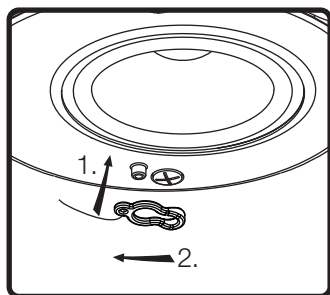
5. Tighten screw on terminal plate, and push conduit connector into knockout.



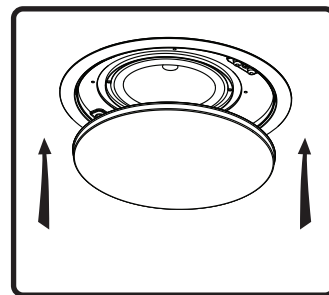
6. If required, a sheet-metal tab located on the rear panel of the speaker serves as a secondary point of attachment (cable not included).



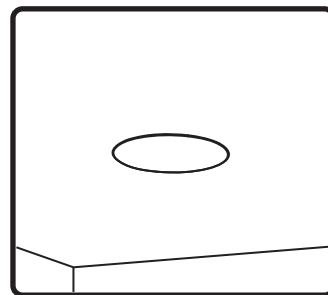
7. Insert speaker into mounting hole with installation aid in place. Screw down both bolts on the baffle face to actuate the mounting wings. Firmly secure both bolts – **do not over-tighten.**



8. Attach grille safety clip by placing the large end of the clip over snap-fit post (1), then sliding clip until small end snaps into place around post (2).



9. Place grille onto baffle. (The grille is held in place by magnets in the baffle.)



10. Done!