

MIPRO[®]

MA-808

Portability

Simplicity

Flexibility

Portable Wireless PA System

User Guide



IMPORTANT SAFETY INSTRUCTIONS

1. Read these instructions.
2. Keep these instructions.
3. Heed all warnings.
4. Follow all instructions.
5. Do not use this apparatus near water.
6. Clean only with a dry cloth.
7. Do not block any ventilation openings. Install in accordance with the manufacturer's instructions.
8. Do not install near any heat sources such as radiators, heat registers, stoves, or other apparatus (including amplifiers) that produce heat.
9. Do not defeat the safety purpose of the polarised or ground plug: A polarised plug has two blades with one wider than the other. The wide blade is provided for your safety. When the provided plug does not fit into your outlet, consult an electrician for replacement of the obsolete outlet.
10. Protect the power cord from being walked on or pinched particularly at plug, convenience receptacles, and the point where they exit from the apparatus.
11. Only use attachments/accessories specified by the manufacturer.
12. Use only with a cart, stand, tripod, bracket, or table specified by the manufacturer, or sold with the apparatus. When a cart is used, use caution when moving the cart/apparatus combination to avoid injury from tip-over.
13. Unplug this apparatus during lightning storms or when unused for long periods of time.
14. Refer all servicing to qualified service personnel. Servicing is required when the apparatus has been damaged in any way, such as power-supply cord or plug is damaged, liquid has been spilled or objects have fallen into the apparatus, the apparatus has been exposed to rain or moisture, does not operate normally, or has been dropped.
15. To reduce the risk of fire or electric shock, do not expose this apparatus to rain or moisture.
16. Apparatus should not be exposed to dripping or splashing and no objects filled with liquids, should be placed on the apparatus.
17. Use only with the battery which specified by manufacturer.
18. The power supply cord set is to be the mains disconnected device.
19. Where the MAINS plug or an appliance coupler is used as the disconnect device, the disconnect device shall remain readily operable.
20. Maximum operating temperature range is 50°C (122°F).
Note: Battery characteristics may limit this range.



® 201-180636

WARNING

1. FOR OUTDOOR USE:



To reduce the risk of fire or electric shock, do not expose this apparatus to rain or moisture.


2. UNDER WET LOCATION:


Apparatus should not be exposed to dripping or splashing and no objects filled with liquids, such as vases should be placed on the apparatus.

3. SERVICE INSTRUCTIONS:

CAUTION - These servicing instructions are for use by qualified service personnel only. To reduce the risk of electric shock, do not perform any servicing other than that contained in the operating instructions unless you are qualified to do so.

CAUTION
RISK OF ELECTRIC SHOCK
DO NOT OPEN

 This symbol indicates that dangerous voltage constituting a risk of electric shock is present within this unit.

 This symbol indicates that there are important operating and maintenance instructions in the literature accompanying this unit.

FC & IC - ID

THIS DEVICE COMPLIES WITH PART15 OF THE FCC RULES AND RSS-123 ISSUE2 OF CANADA. OPERATION IS SUBJECT TO THE FOLLOWING TWO CONDITIONS:

(1) This device may not cause interference.

(2) This device must accept any interference, including interference that may cause undesired operation of the device. This equipment complies with FCC RF radiation exposure limits set forth for an uncontrolled environment.



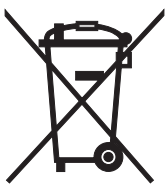
“This product can only be used at the area that the altitude is lower than 2000m for safety purpose.”



“This product can be used in non-tropical locations only for safety purpose.”

Disposal

Dispose of any unusable devices or batteries responsibly and in accordance with any applicable regulations.



Disposing of used batteries with domestic waste is to be avoided!

Batteries/NiCad cells often contain heavy metals such as cadmium(Cd), mercury(Hg) and lead(Pb) that makes them unsuitable for disposal with domestic waste. You may return spent batteries/accumulators free of charge to recycling centres or anywhere else batteries/accumulators are sold.

2005-08-13

By doing so, you contribute to the conservation of our environment!

Portable Wireless PA System

I. Part Names

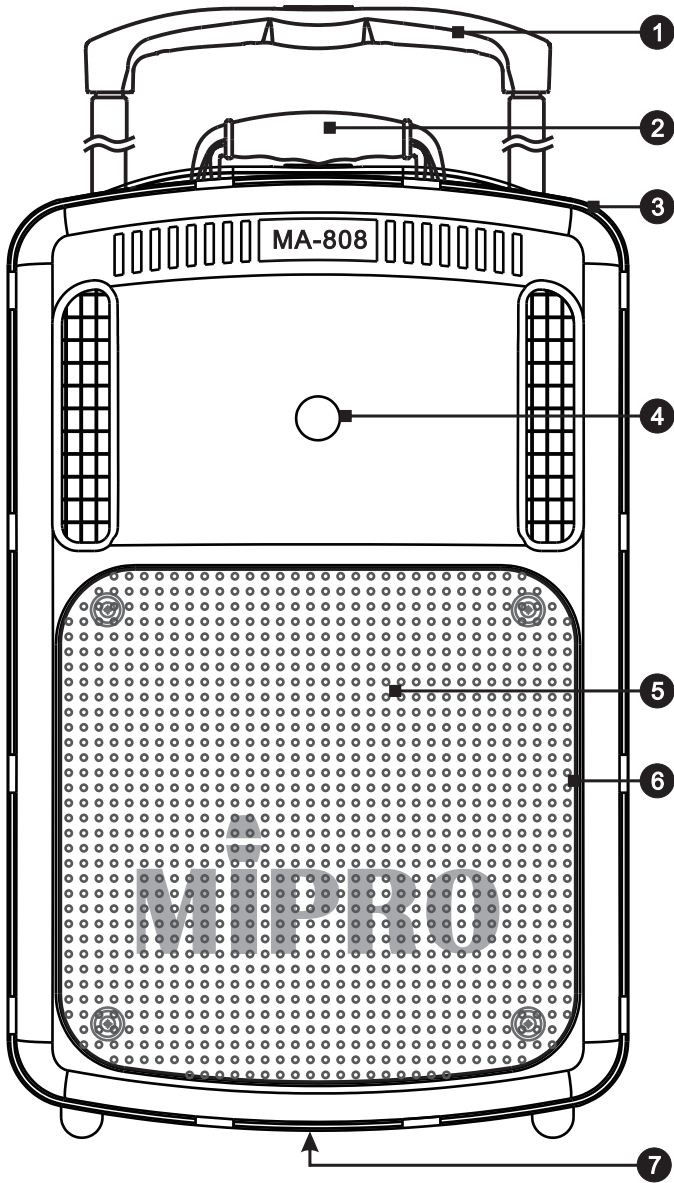


Fig. 1: Front Panel

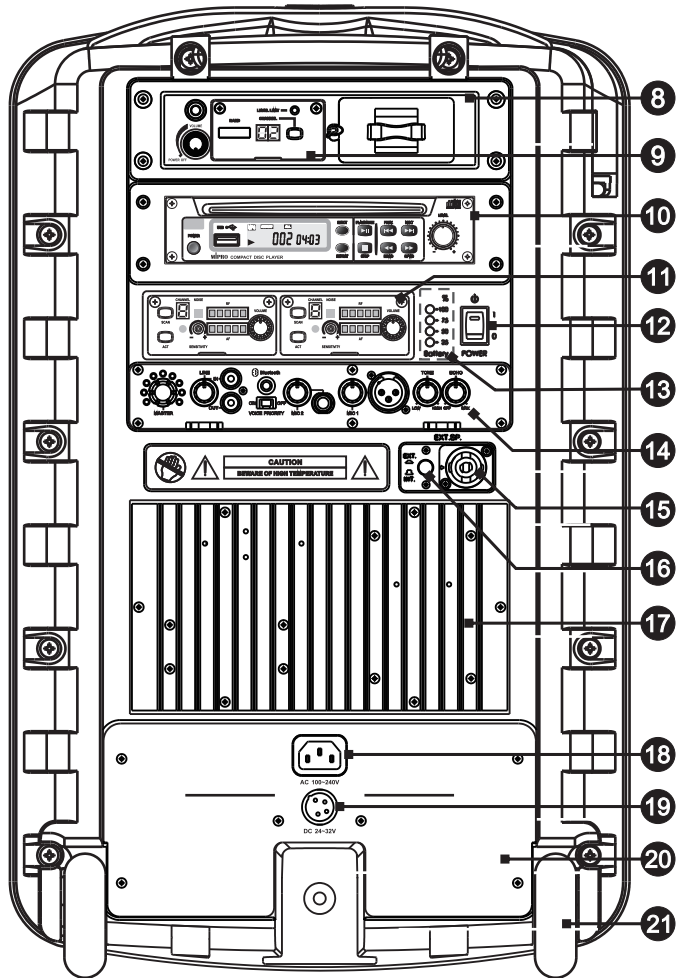


Fig. 2: Rear Panel

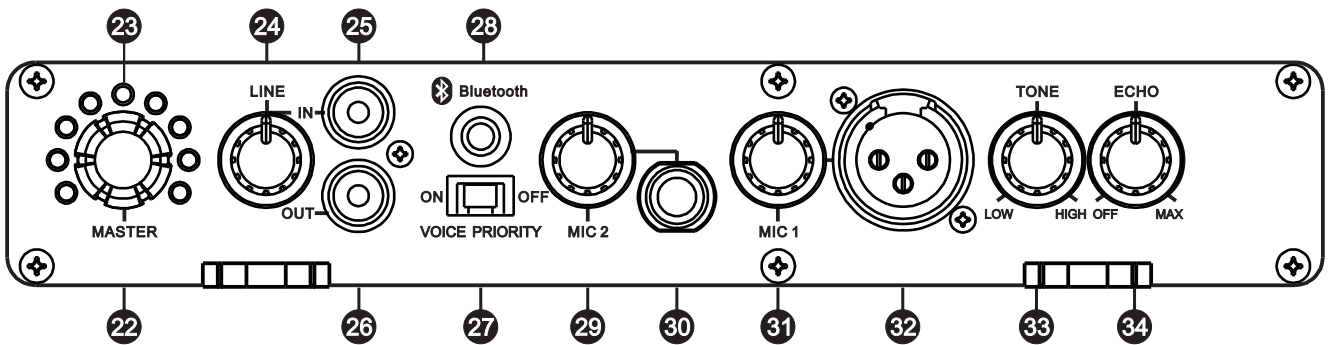


Fig. 3: Control Panel

Portable Wireless PA System

Front Panel: Fig. 1

- ① Retractable Carry Handle.
- ② Fixed Handle.
- ③ Microphone Storage Compartment.
- ④ Treble Speaker.
- ⑤ Bass Speaker.
- ⑥ Speaker Grille.
- ⑦ Tripod Stand Mount.

Rear Panel: Fig. 2

- ⑧ Optional Receiver or Interlinking Transmitter Module Frame.
- ⑨ Optional Receiver or Interlinking Transmitter Module.
- ⑩ Optional CD/MP3 Media Player.
- ⑪ Optional Wireless Receiver Module(s).
- ⑫ Master Power Switch.
- ⑬ Battery Status Indicators.
- ⑭ Control Panel.
- ⑮ Speakon Connector.
- ⑯ Passive Extension Speaker Switch.
- ⑰ Heat Sink.
- ⑱ AC Power Cord Socket.
- ⑲ DC Power Connector.
- ⑳ Battery Compartment Cover Plate.
- ㉑ Trolley Wheels.

Portable Wireless PA System

Control Panel: Fig. 3

- ②② Digital Master Volume Control.
- ②③ Master Volume Indicators.
- ②④ Line Input Volume Control.
- ②⑤ Line Input RCA Jack.
- ②⑥ Line Output RCA Jack.
- ②⑦ Voice over Music Priority Switch.
- ②⑧ Bluetooth Power Button & Indicator.
- ②⑨ MIC 2: Unbalanced 6.3 Ø Microphone Input Volume Control.
- ③⑩ Unbalanced 6.3 Ø Microphone Input.
- ③① MIC 1: Balanced XLR Microphone Input Volume Control.
- ③② Balanced XLR Microphone Input.
- ③③ Tone Control.
- ③④ Echo Control on Microphones.

Portable Wireless PA System

II. Operating Instructions

1. Power On

Minimize all volume levels before turning on the Master Power Switch 12 . A fully lit Battery Status Indicators 13 indicates the rechargeable battery is fully charged. A single red color indicator indicates the rechargeable battery is low on power. Simply plug the supplied power cord into the power socket on the back and the other end into an AC power outlet to recharge the battery.

2. Master Volume Control

(A) Master Volume Control 22 has two switchable modes. The standard mode resets to zero volume level after power is turned off. The memory mode saves and recalls the last programmed volume level by pressing and holding the specific volume indicator before power is turned off. Master Volume Indicators 23 displays the volume levels.

(B) We recommend the master volume control is turned to the maximum level. Next, adjust volume of other audio input individually to avoid distortion with maximum dynamic range output. Built-in audio limiter serves automatically to prevent the signal level from exceeding a preset limit and stop sound from distorting.

3. Line-input 25 and Line-output 26 RCA Jacks

(A) Reduce the Line Input 24 volume levels to minimum. Once powered on, adjust master volume levels 22 to maximum, and adjust line input volume to appropriate level.

(B) Line Output jack 26 combines all mixed audio. Volume levels are individually adjusted, and not related to master volume control.

4. Wired Microphone

(A) Reduce microphone volume levels to minimum. Once powered on, adjust master volume levels 22 to maximum.

(B) Plug an unbalanced 6.3 Ø microphone into Unbalanced 6.3 Ø Microphone Input 30 and adjust MIC 2: Unbalanced 6.3 Ø Microphone Input Volume Control 29 .

(C) Plug a balanced XLR microphone into Balanced XLR Microphone Input 32 and adjust MIC 1: Balanced XLR Microphone Volume Control 31 .

(D) Tone Control 33 for high/low or Echo Control 34 effect adjustments.

Portable Wireless PA System

- (E) The Voice over Music Priority 27 feature mutes the volume of the played audio when it is switched to on and microphone is used. Feature is disable it is switched to off.
- (F) The wired and wired microphones can be used at the same time and sound can be heard simultaneously.

5. Receiver Module

Part Names, Fig. 4

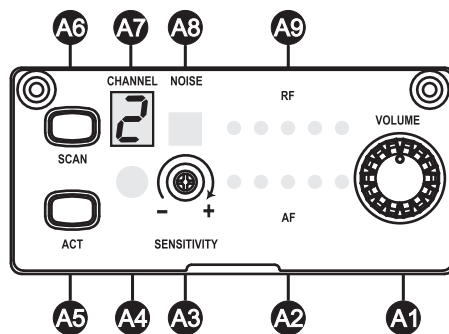


Fig. 4

- A1 Power & Volume knob.
- A2 Audio indicators.
- A3 Sensitivity level adjustor.
- A4 Channel sync ACT window.
- A5 Channel sync ACT button.
- A6 Channel SCAN button.
- A7 Channel LED screen.
- A8 Noise interference indicator.
- A9 RF indicators.

6. Wireless Microphones

- (A) Reduce microphone volume levels to minimum. Once powered on, adjust master volume levels 22 to maximum.
- (B) Power on the receiver module and reduce volume levels A1 to minimum.
- (C) Perform the channel synchronization between the receiver and transmitter by pressing the Channel sync ACT button. Once channel is synchronized adjust to the desired volume levels.
- (D) Both wired and wireless microphone has the voice over music priority function.

Portable Wireless PA System

(E) Operating Instructions:

(1) Scan Automatically for a Non-interference Receiver Channel:

Press and hold Channel (CH) button **A6** to perform a channel scan. Existing channel blinks to denote it is ready to accept parameter changes. During blinking, press and release Channel button to scan and stop for an open channel. This new channel is now saved. If Channel button is not pressed within six blinks, it stops blinking and reverts back to the existing channel, Fig. 5.

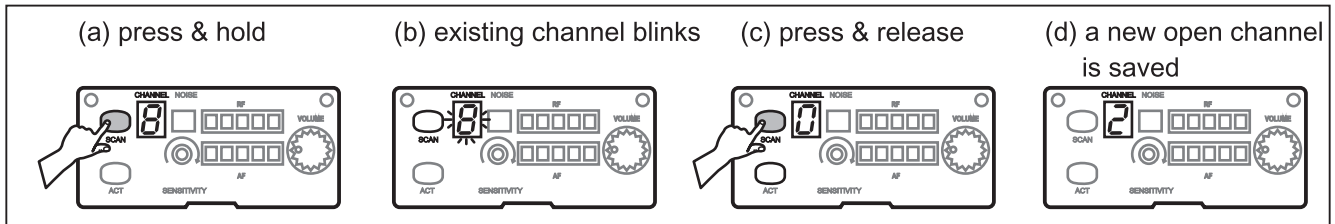


Fig. 5

(2) Manually Searching for a Receiver Channel:

Press and hold Channel (CH) button **A6** to perform a manual channel search. Existing channel blinks to denote it is ready to accept parameter changes. During blinking, press and hold Channel button to force the channel to go forward to the next channel in order. Release Channel button until a desired channel is located. This new channel is now saved. If Channel button is not pressed within six blinks, it stops blinking and reverts back to the existing channel, Fig. 6.

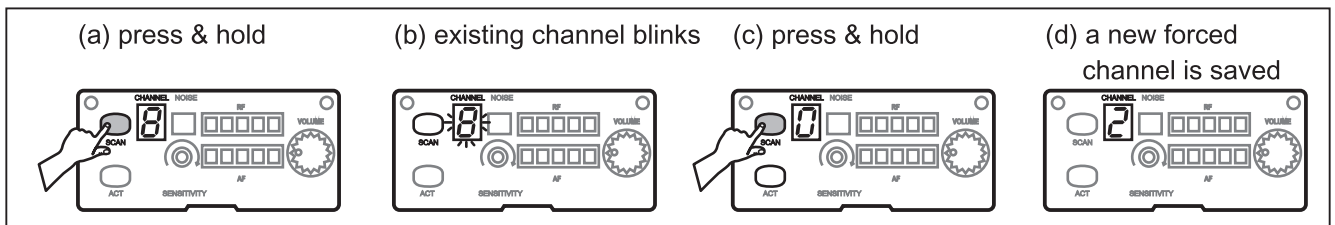


Fig. 6

(F) Reason for Changing a new Channel:

- (1) Noise or interference is heard during a presentation or performance.
- (2) When two or more receiver modules are installed, therefore, two or more compatible channels are required to be used simultaneously.

(G) Caution:

- (1) Do not attempt to change a new channel during a performance where two or more transmitters/microphones are being used simultaneously to avoid interferences with each other generated by the transmitting microphone signals.
- (2) “_” denotes this channel is currently experiencing interference, therefore, it should be avoided.

Portable Wireless PA System

(H) ACT Channel Synchronization:

- (1) Ascertain both receiver and transmitter are powered on. Press ACT button **A5** on receiver to activate IR (infrared) channel synchronization. Existing channel blinks **A7**.
- (2) Align the ACT sync windows of both transmitter and receiver within 30cm of each other for an automated channel synchronization, Fig. 7.
- (3) If ACT channel synchronization is performed successfully, the new channel stops blinking, RF indicators are lit and audio indicators are lit once you speak into the microphone.

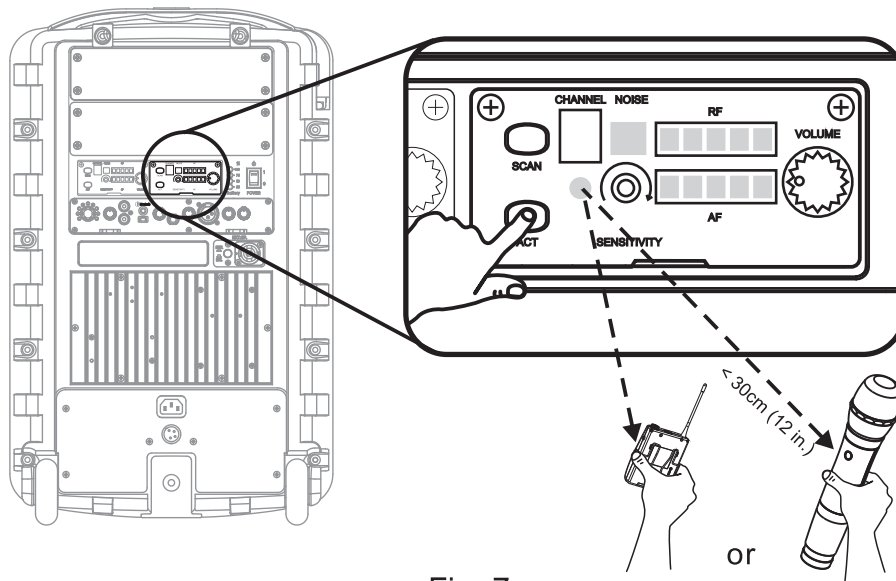


Fig. 7

7. Pairing Bluetooth Receiver

- (A) Power on the Bluetooth receiver and bring the mobile device within reception range.
- (B) Press & hold the Bluetooth power button & indicator **23** for 3-5 seconds until blue/red indicator **28** light is flashing intermittently to indicate the receiver is now ready to be paired.
- (C) If indicator is not flashing intermittently or not flashing, repeat by press & hold for 3~5 seconds until blue/red indicator is flashing intermittently.
- (D) Search Bluetooth devices and click on "MIPRO MB-xx" for receiver ID. Enter "0000" when prompted to enter a PIN code. This will cause your device to pair with the Bluetooth receiver.
- (E) Once paired and connection is made, the blue color indicator light on the Bluetooth receiver will continue to flash intermittently.
- (F) To cancel Bluetooth function by press & hold Bluetooth power button & indicator for 3 seconds.
- (G) Power off and on the Bluetooth receiver for changing connected device. Repeat the directions in "Pairing Bluetooth Receiver" to connect a different device.

Portable Wireless PA System

III. Connection for External Audio Sources, Fig. 8

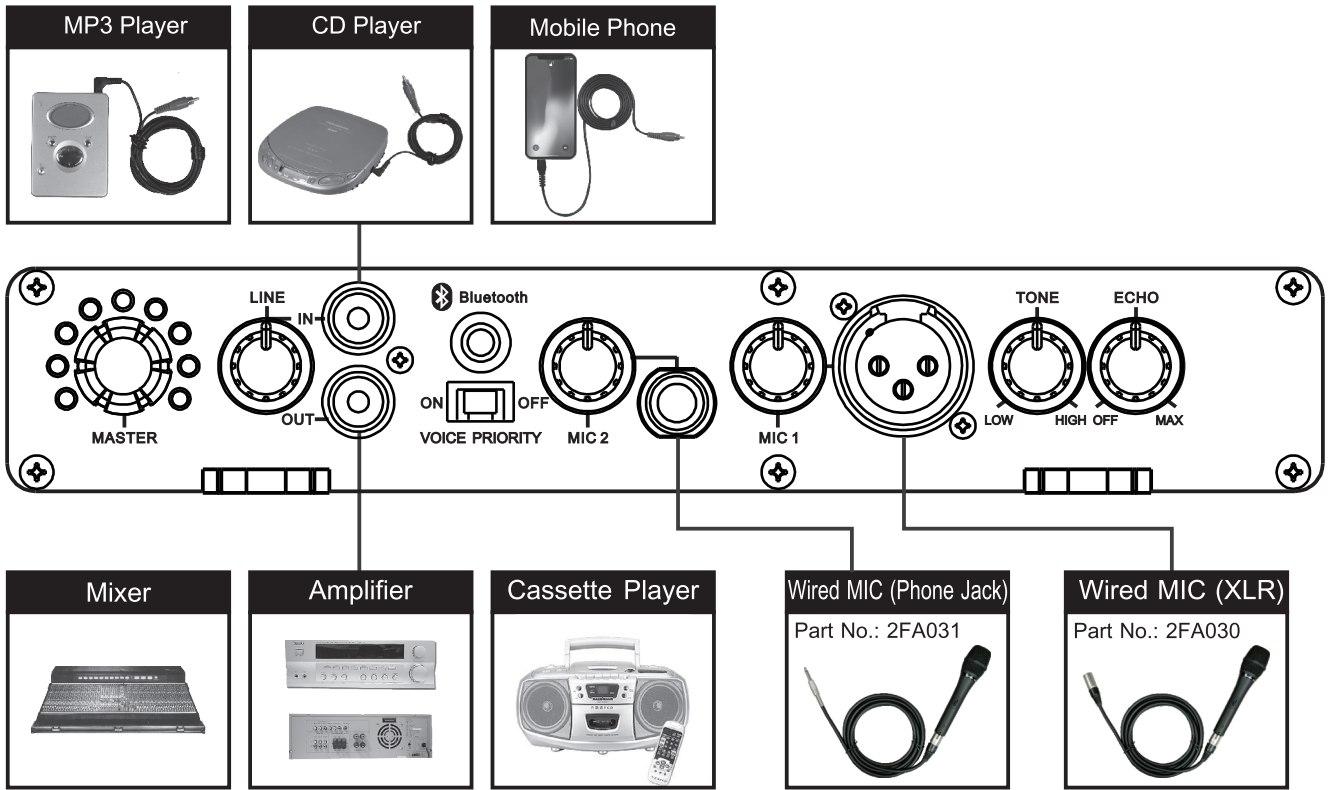


Fig. 8

Portable Wireless PA System

IV. Operation of Microphone Storage Compartment, Fig. 9

1. Two handheld transmitter microphones can be stored in the storage.
2. Storing Transmitters:
 - (A) Open the lid. (see fig. **A** & **B**)
 - (B) Place the microphone downwards with microphone head pointing up. (see fig. **C** & **D**)
 - (C) Once inserted, cover up the lid snugly. (see fig. **E** & **F**)

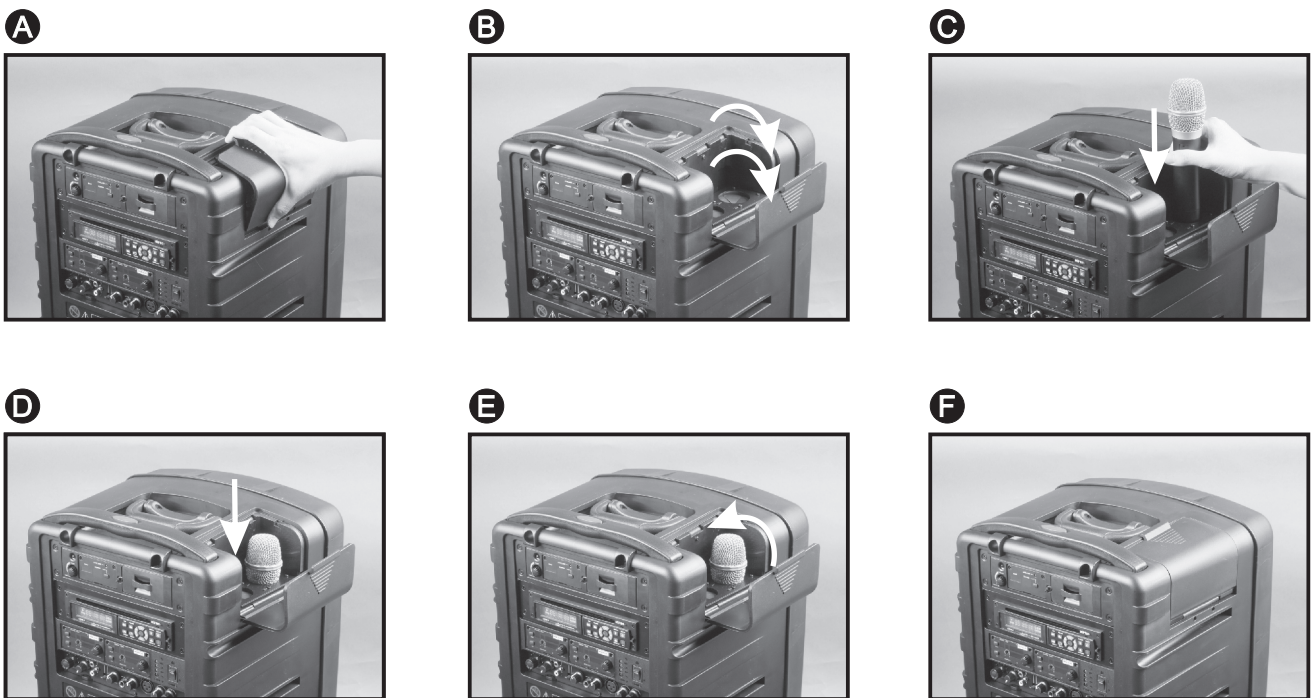


Fig. 9

Portable Wireless PA System

V. Replace Battery, Fig. 10

1. Remove screws from steel protection cover plate ⑳ by using a Phillips-head screwdriver (not supplied), Fig. 10-1.
 2. Tilt slightly, gently & slowly slide battery away from each battery housing compartment. Remove both color-coded wires, Fig. 10-2.
 3. Connect red-color wire and black-color wire (Fig. 10-3, 10-4). Ensure the red color cable is positioned on top, near the “+” terminal. Connect a 3rd cable (red color) to the terminal socket only for Left Side Compartment when replacing with MB-80.
 4. Insert connected battery into left and right compartment. Fasten the screws once it is covered by steel protection cover plate, Fig. 10-5.
- * Note: Each MB-80 battery case holds 4 LFP batteries. 2 MB-80 battery cases are needed.

Fig. 10-1

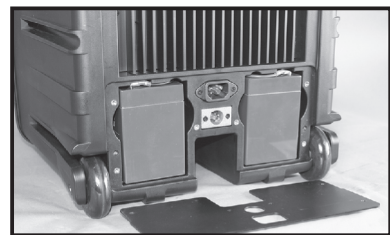
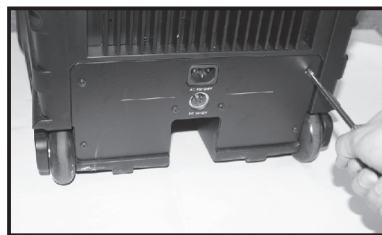


Fig. 10-2

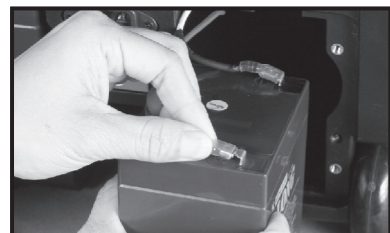


Fig. 10-3
Left Side
Compartment

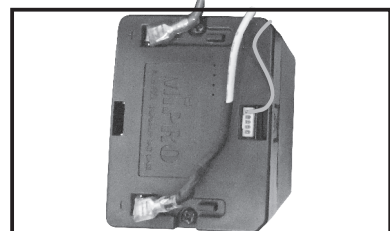
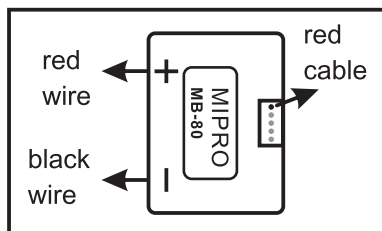
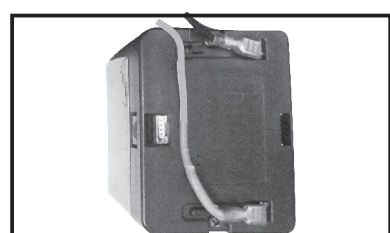
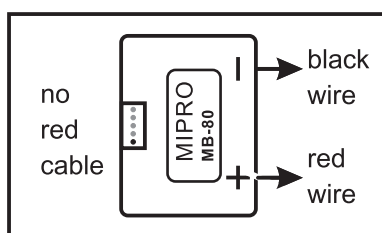


Fig. 10-4
Right Side
Compartment



Portable Wireless PA System

Fig. 10-5

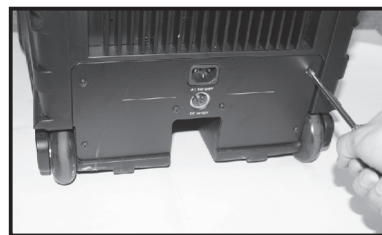


Fig. 10

5. Please only use the following rechargeable internal battery (MIPRO MB-70 x 2 or MB-80 x 2) or an equivalent rechargeable battery of the same type, rating & specifications when it is required to be replaced.

Manufacturer

Kung Long Batteries Industrial Co., Ltd.

Cat No

WP4.5-12

Rating

12 Vdc, 4.5 Ah

6.  CAUTION:

- (A) Always change both rechargeable batteries at the same time.
- (B) Do not mix battery types and do not mix old and new batteries. Replace both batteries at the same time.
- (C) Replace with the same type and rating rechargeable battery only.
- (D) Rechargeable battery can be purchased from authorized MIPRO distributors & dealers.
- (E) Danger of explosion if battery is incorrectly replaced.
- (F) Do not try to heat, ignite, disassemble or throw batteries into a fire.

Portable Wireless PA System

VI. Power Usage Instruction

1. How to use AC power input

- (A) After putting the power plug into the AC input socket ⑬ of the device, the 4 battery meter indicators ⑬ will glow immediately, no matter if the power switch is on or off. This means that the built-in switching power supply is functioning normally and the built-in rechargeable batteries are fully charged. If the battery meter indicators are blinking this means that the built-in switching power supply is working normally and the built-in rechargeable batteries are in an under charged condition. After a couple of minutes, the battery meter indicators will stop blinking and continue a glowing condition, indicating the batteries are now fully charged.
- (B) AC power provides power to both the unit itself and to the built-in lead-acid rechargeable batteries.
- (C) When using the AC power, you can remove or plug the power cord freely with no need to turn off the power switch first. If or when an unfortunate power cut happens during usage, the MA-808 will activate the DC power automatically to maintain continuous operation.

2. How to use DC power input

- (A) Two built-in series connection lead-acid batteries with models WP 4.5-12 are used. When the batteries are fully charged, the unit can be operated continuously for approximately 7~8 hours in standby mode (CD player and two receivers are turned on); 6~7 hours for audio and 5~6 hours for music. (The above figures are references for brand new batteries only)
- (B) The built-in rechargeable batteries can be recharged when the unit is plugged into an AC or DC power outlet.
- (C) In the case of no AC power connection, if the power switch ⑫ is not turned on, the battery meter indicators ⑬ will not be shining. When the power switch is turned on, the red LED on it will be shining; meanwhile, if 2 to 4 battery meter indicators are shining, it means the battery power is enough for normal operation. The number of the shining indicators is in direct proportion of the battery power. If only 1 battery meter indicator is shining or the red LED on the power switch is sparking, it means the battery power is insufficient and immediate charge is necessary. If no battery meter indicators are shining after the power switch is turned on, it means the batteries are completely discharged or possibly faulty.
- (D) Always store MA-808 system with the batteries fully charged if needing to store the system for more than 3 months. Leave the system plugged into an AC power outlet when not in use.

Portable Wireless PA System

- (E) The rechargeable batteries will not function properly if not recharged for an extended period of time. It is therefore, recommended to recharge after every use regardless of the usage time to preserve battery life.
- (F) If the battery is not used for a long time or not charged properly, even the storage temperature is too high, resulting in excessive discharge and charging failure, the first step is to remove the battery and charge it by 18V/2A DC power supply for more than half an hour and noted the battery surface temperature should not exceed 50 °C during charging. Then, reload it into the machine and turn on the power, if the battery indicator lights a red light, connect the AC power for normal charging procedure; if the battery indicator is completely off, which indicates that the battery has failed.



AC power and DC power can not be used at the same time.

A connector is included which allows users to make DC wiring.
See diagram below for illustration:

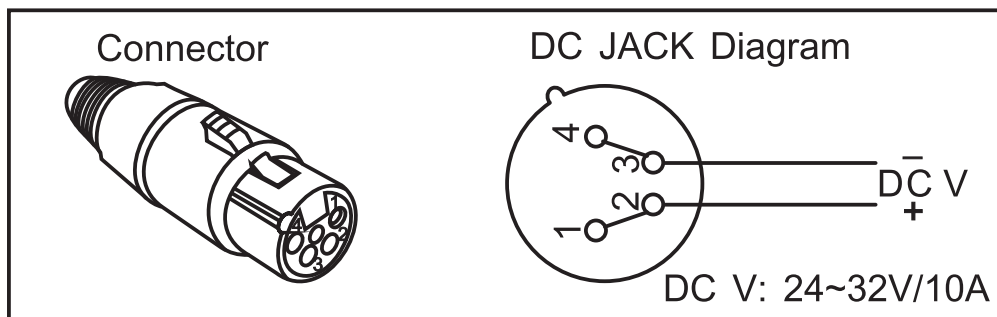


Fig. 11

VII. Selection and Installation of Wireless Receiver Modules

1. Each MA-808 can install two separate wireless receiver modules situated at the two slots **11** right above the control panel.
2. Installation or replacement of wireless receiver modules, Fig. 12.
 - (A) Using a Phillips-head screwdriver (not supplied) remove the screws to remove receiver protection cover panel. (see fig. **A** & **B**)
 - (B) Gently insert the receiver module into the slot. Make sure the back edge connector is aligned and firmly connected. (see fig. **C** & **D**)
 - (C) Tighten up the screws. (see fig. **E**)

Portable Wireless PA System

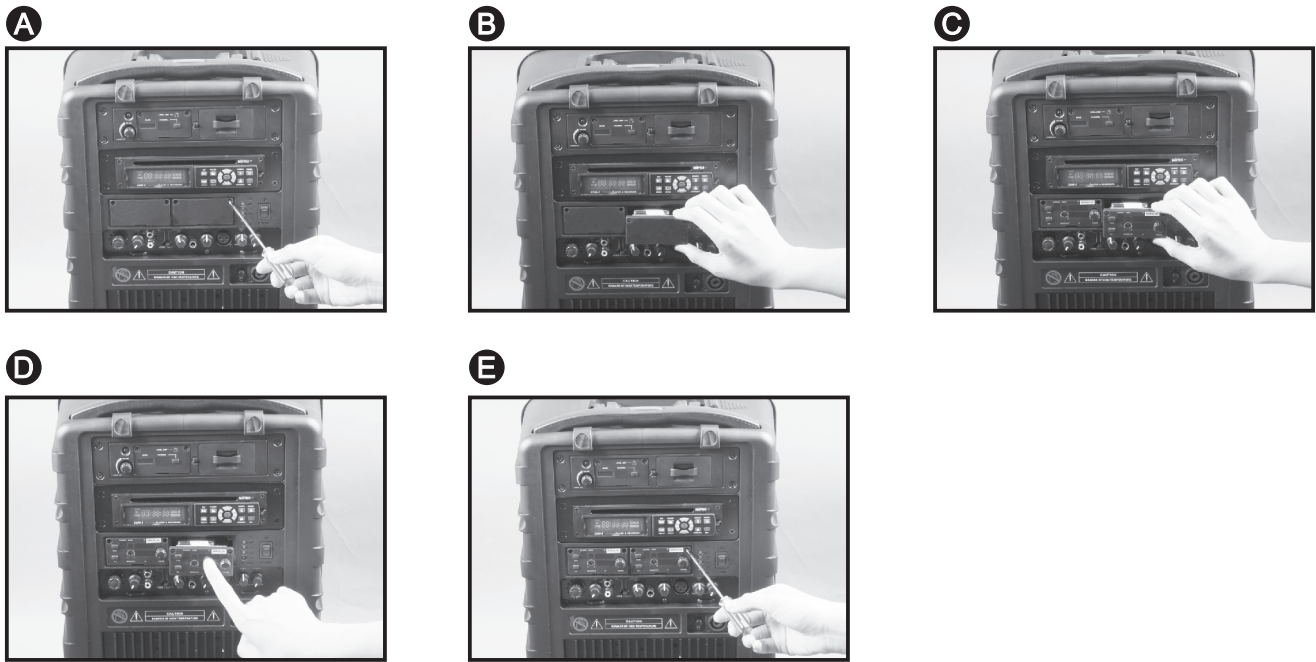


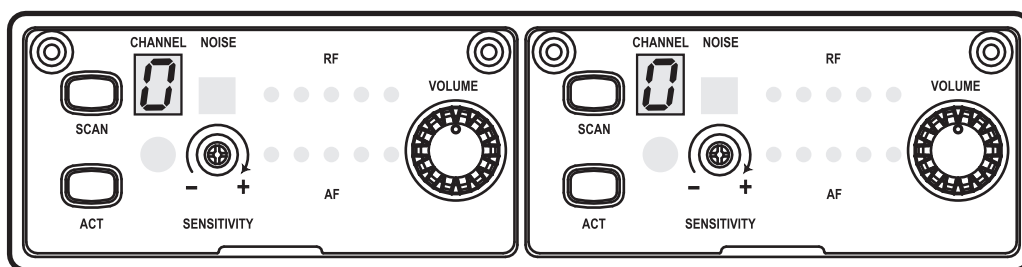
Fig. 12

3. Each MA-808 can also install a dual-channel wireless receiver modules situated at the top slot ⑧ right above the optional CD / MP3 media player. MRM-72 / MRM-72B receiver consists of 2 MRM-70 / MRM-70B receiver modules side-by-side.

4. Installation or replacement of wireless receiver modules, Fig. 13:

- (A) Using a Phillips-head screwdriver (not supplied) remove the screws to remove receiver protection cover panel.
- (B) Gently insert the receiver module with frame into the slot. Make sure the back edge connector is aligned and firmly connected.
- (C) Tighten up the screws.

MRM-72/MRM-72B



MRM-70/MRM-70B

MRM-70/MRM-70B

Fig. 13

Portable Wireless PA System

VIII. Wireless Interlinking Transmitter and Receiver Modules.

1. Users have options to add a single MTM-92 wireless interlinking transmitter module in this slot. The purpose of MTM-92 is to interlink multiple MIPRO MA-808 portable PA systems wirelessly to greatly extend the transmission range and expand coverage.

(A) MTM-92 Wireless Interlinking Transmitter Part Names, Fig. 14:

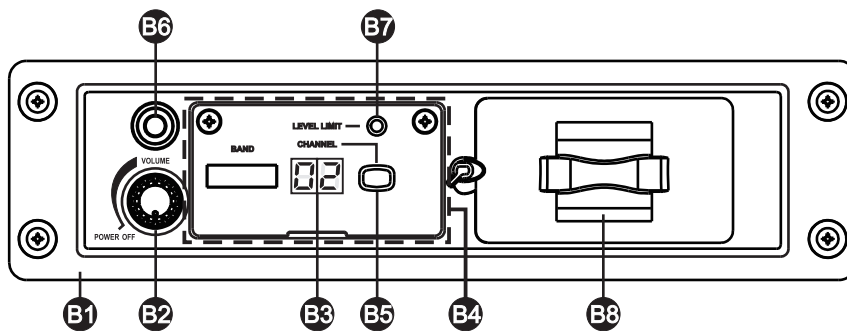


Fig. 14

- B1 MTM-92 Frame.
- B2 Power Switch / Volume Knob.
- B3 Channel LED Display.
- B4 MT-90 / MT-92 transmitter module.
- B5 Channel-Selecting Button.
- B6 Power Indicator.
- B7 Level Limiter Indicator.
- B8 Bodypack Transmitter Storage.

(B) Installation of Wireless Interlinking Transmitter:

- (1) Using a Phillips-head screwdriver (not supplied) remove the screws to remove protection cover panel.
- (2) Gently insert the transmitter module into the slot. Make sure the back edge connector is aligned and firmly connected.
- (3) Tighten up the screws.

(C) Operating Instructions of MT-90 / MT-92 Wireless Interlinking Transmitter:

- (1) Power On/Off: Turn the transmitter power/volume switch B2 to ON by rotating the knob clockwise. When ON, the power indicator and Channel LED Display will be lit. Rotate volume knob clockwise to adjust the desired volume. Rotate same volume knob counterclockwise to power OFF the transmitter.

Portable Wireless PA System

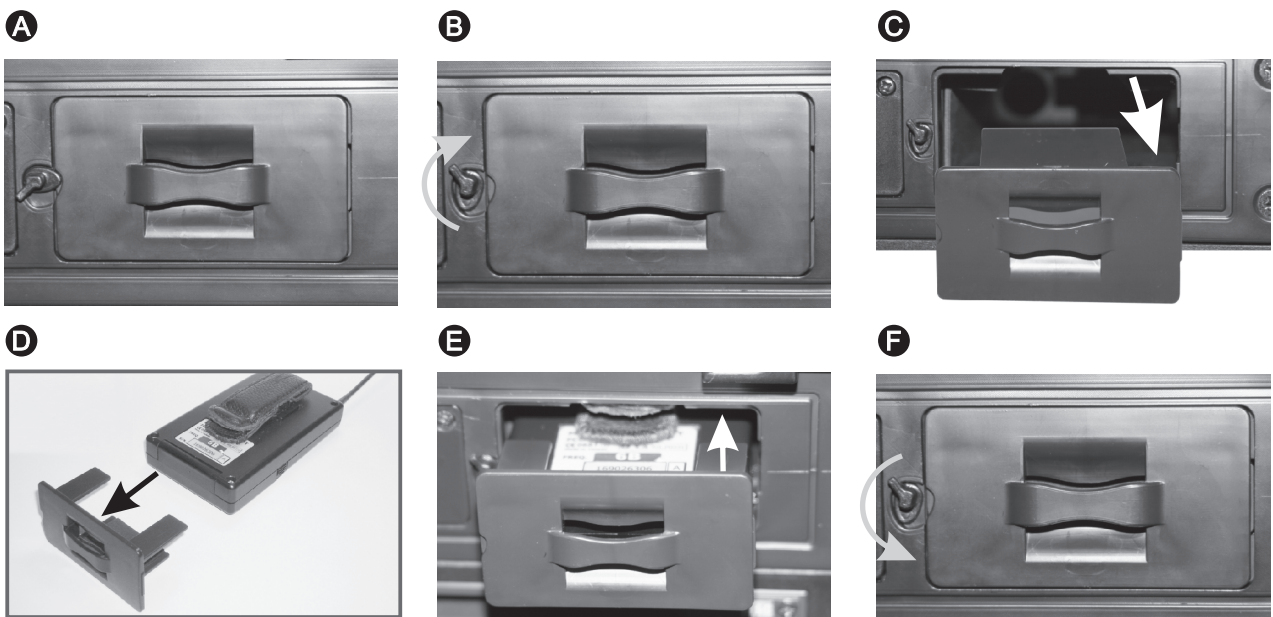
(2) Select Channels:

- (a) To select a channel one at a time: Press and hold the Channel-Selecting button **B5** for around 2 seconds and release when channel LED display starts flashing. Press and release button once to move to the next available channel. If button is not pressed again when Channel LED flashes 6 times, the channel appearing in Channel Display is automatically saved and set.
- (b) To select channel continuously: Press and hold the Channel-Selecting button for around 2 seconds until channel LED display starts flashing. Press and hold same button will automatically advance channel continuously until stopped. There are a total of 16 preset channels. If button is not pressed again when Channel LED flashes 6 times, the channel appearing in Channel Display is automatically saved and set.

- (3) The Level Limiter Indicator **B7** will not be lit under normal audio volume. If the audio input exceeds the set limitations, volume restriction control will activate and the indicator will lit. Adjust volumes to an acceptable level.

(D) MTM-92 Compartment for Bodypack Transmitter:

- (1) Compartment holds and stores one body pack transmitter, Fig. 15.
- (2) Locate and loosen the compartment fastener.
- (3) Gently pull the compartment door away from the slot.
- (4) Slide the back of the bodypack transmitter into the back of the compartment door in position.
- (5) Carefully keep the antenna in horizontal position to prevent from being squeezed.
- (6) When secured, push in the compartment door back into the slot.
- (7) Turn fastener counter clockwise to secure the compartment door.



Portable Wireless PA System

G



Fig. 15

IX. Installation of MIPRO CD/MP3 Media Player

1. Installation of CD/MP3 Media Player, Fig. 16.

(A) Using a Phillips-head screwdriver (not supplied) remove the screws to remove protection cover panel.

(B) Gently insert the MP3 media player module into the slot. Make sure the back edge connector is aligned and firmly connected.

(C) Tighten up the screws.

A



B



C




Fig. 16

2. Operations of CD/MP3 Media Player: See a separate player manual enclosed in the master carton.

Portable Wireless PA System

X. Helpful Operating Tips

1. We recommend placing sound system between the target audience and the presenter, facing the audience and raised above their heads using a speaker stand or tabletop. This set-up helps prevent the annoying feedback by keeping wireless & wired microphone users behind the sound system. The internal power supply rechargeable batteries should be kept fully charged. Always charge the system after use.
2. Minimized the master volume control  before powering on. Adjust the volume controls afterward.
3. Each audio input is accepted through amplifier and its volume can be controlled separately.
4. Each audio input can be broadcasted and recorded at the same time.
5. NEVER place any wired or wireless microphone in front or close in front of the speaker otherwise feedback could occur.
6. Do not expose the MA-808 to an environment where there are water dropping or splashing.
7. This speaker fits into a standard speaker tripod stand.
8. Detached the power cord from AC power outlet once the system is fully-recharged.
9. Refer to operating instructions for wireless microphone system.
10. Refer to actual product in the event of product description discrepancy.
11. Frequency range, output power and maximum deviation to comply with the regulations of different countries.

MIPRO[®]
MICROPHONE PROFESSIONALS

MIPRO Electronics Co., Ltd

Headquarters: 814 Pei-Kang Road, Chiayi, 60096, Taiwan

Tel : +886.5.238.0809

Fax : +886.5.238.0803

www.mipro.com.tw

mipro@mipro.com.tw

All rights reserved. MN 019/06

Do not copy or forward without prior approvals MIPRO.

Specifications and design subject to change without notice.



2005-08-13



2CE538D