



# PURERESONANCEAUDIO®

## MICRO20™ QUICK START GUIDE

1

Press the ON/OFF Button on the receiver.

Note: "Loading" on the screen

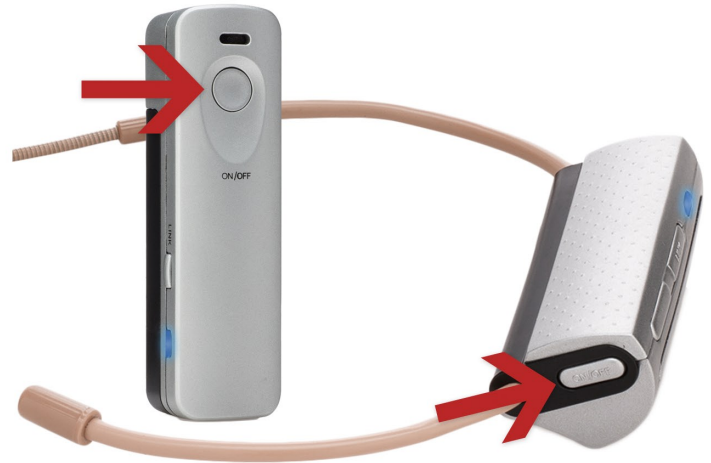
*\*Check that the receiver is plugged into an outlet.*



2

Press the On/OFF Button on the transmitter.

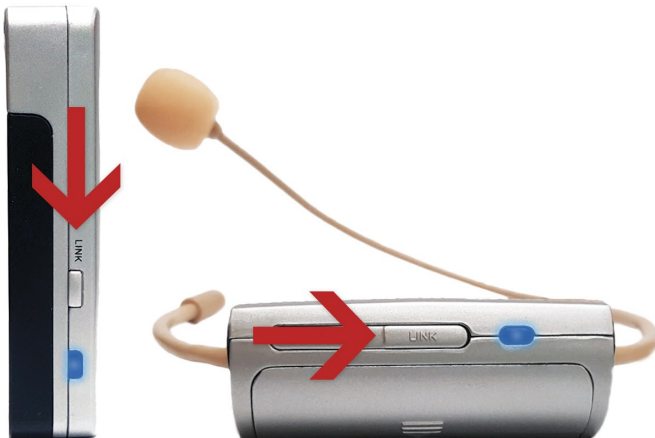
Note: **BLUE** light



3

Press the LINK Button on the transmitter.

Note:  
**BLUE** light on the pendant microphone.  
Blinking **BLUE** light on the collar microphone



4

A **GREEN** light on the receiver under "Running" means the microphone is Ready to use

Note: **RED** light means the link was NOT successful.  
Start at **1** and try again.

