



PURERESONANCEAUDIO[®]

P115 15" PASSIVE LOUDSPEAKER

INSTALLATION AND OPERATION MANUAL



Caution: Please read this manual carefully before operating.
Damage caused by misuse is not covered by the warranty.

SAFETY PRECAUTIONS

- Be sure to read the instructions in this section carefully before use. The included conventions of safety symbols and messages are regarded as essential precautions.
- We recommend that you keep this instruction manual handy for future reference.

SAFETY SYMBOL AND MESSAGE CONVENTIONS

Safety symbols and messages described below are used in this manual to prevent bodily injury and property damage that could result from mishandling. Before operating this product, read this manual first and understand the safety symbols and messages so you are thoroughly aware of the potential safety risks.



WARNING!

Indicates a potentially hazardous situation which, if mishandled, could result in death or serious personal injury.



CAUTION!

Indicates a potentially hazardous situation which, if mishandled, could result in moderate or minor personal injury, and/or property damage.



WARNING!

IMPORTANT SAFETY INSTRUCTIONS

*****THIS PRODUCT MUST BE INSTALLED BY A QUALIFIED TECHNICIAN.
THE PROVIDED INSTALLATION HARDWARE MUST BE USED TO INSTALL THIS PRODUCT.*****

Pro Acoustics is not responsible for the structural integrity of the installation. Please ensure that a qualified technician installs this product and that the building's engineer or architect has approved the equipment and installation.

- This product must be securely installed or set on a stable, flat surface to prevent injury.
- DO NOT allow any water or rain exposure to speakers.
- DO NOT install in humidity, dust, direct contact with the sun, near electricity, smoke, steam, or any heat source such as stoves, radiators, heat registers, amplifiers, or other apparatuses producing heat.
- DO NOT place any naked flame sources, such as candles, close to the product.
- DO ensure that when the speakers are installed or flown, the wall or ceiling can structurally support the speaker's weight and securely attach the speakers.
- DO ensure that the speaker wire is not damaged when installing. Frayed or damaged wires can cause electric shock or fire.
- DO NOT connect the speaker while your hands are wet, as this may lead to electric shock.
- USE hardware and accessories that can fully support the speaker's weight.
- REFER all servicing to qualified service personnel. Servicing is required when the speaker is damaged in any way, does not operate normally, or has been dropped.

*No user-serviceable parts inside. Refer all servicing to qualified service personnel.

*Changes or modifications not expressly approved by the manufacturer could void the user's warranty.

DESCRIPTION

The Pure Resonance Audio P115 is a versatile and rugged 15" 2-way passive loudspeaker, perfect for medium to large venues such as gymnasiums, fitness centers, churches, schools, auditoriums, and public address systems. Designed for high-performance audio, this passive cabinet speaker features a 1" compression driver with a 1.35" voice coil for crisp high frequencies and a 15" woofer with a 2.5" voice coil for robust mid and low frequencies. Its wide frequency response and 350 watts of power deliver full-range, professional, high-output audio with excellent vocal intelligibility. The P115's lightweight, molded polypropylene plastic enclosure ensures durability and portability, aided by three integrated handles. This passive speaker includes rigging points and a pole mounting socket for versatile configurations or can be used as a floor monitor.

FEATURES

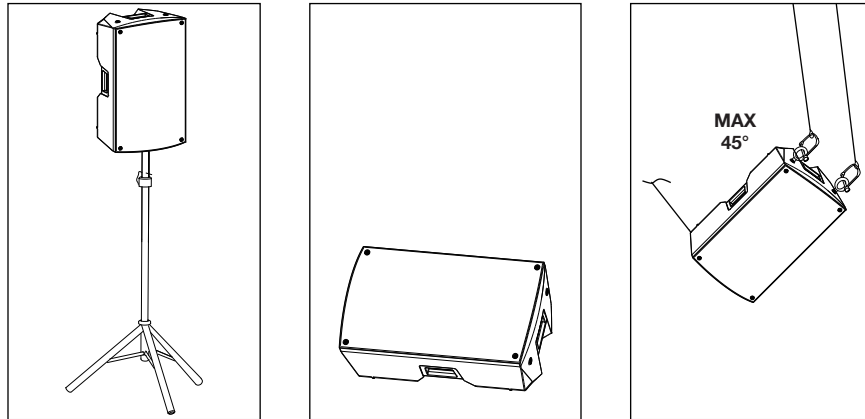
- Robust and rust-resistant construction for superior durability
- 15" LF driver with a 2.5" V.C. ensures excellent low-frequency reproduction
- 1" Compression driver with a 1.35" V.C. provides extended high-frequency response
- 90° x 60° coverage pattern and 97 dB sensitivity deliver high-output sound with professional quality
- 350 Watts of power at 8 Ohms with 2 SpeakON NL4 connections for maximum efficiency
- Can be placed on its side to use as a floor monitor with a tilt angle of 40°
- Pole socket allows for stand mounting with a tilt angle between 0° and 7.5°
- Includes 3 rigging points for suspending with included M8 eye bolts
- 3 integrated handles make lifting and transporting easy

SPECIFICATIONS

Power Rating	350 Watts RMS; 1000 Watts Peak
Frequency Response (± 10 dB)	53Hz - 20kHz
Crossover Frequency	1.8 kHz
Sensitivity (@ 1w/1m)	97 dB
Max SPL	128 dB
Dispersion	90° x 60°
Impedance	8 Ohms
Woofer	15" with 2.5" voice coil
Tweeter	1" Compression driver with 1.35" voice coil
Material	Polypropylene
Connection	(2) SpeakON NL4
Dimensions (HxWxD)	28.54" (725 mm) x 16.93" (430 mm) x 15.94" (405 mm)
Weight	41.29 lbs (18.73 kg)

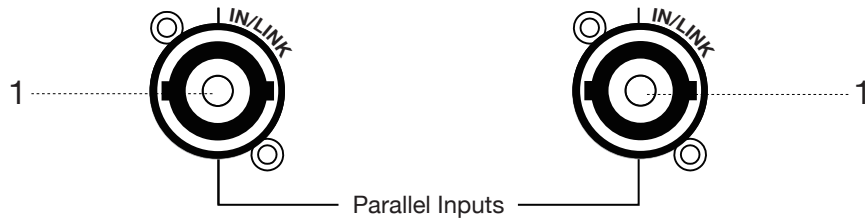
INSTALLATION & OPERATION GUIDE

CONFIGURATION OPTIONS



CONNECTIONS

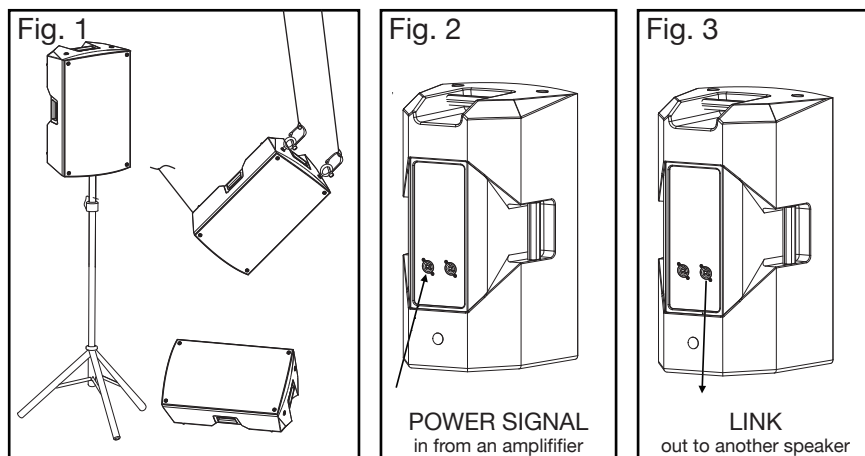
Parallel Speakon Sockets: Connect the output from the power amplifier or amplified mixer to one of the two sockets; use the other socket to relay the signal to another speaker, taking into account the total impedance.



Nominal Impedance: 8Ω
Power Handling: 350W RMS

QUICK SETUP

1. Position the speaker appropriately for the chosen type of installation (Figure 1).
2. Connect the outputs of a power amplifier to the inputs (Speakon) of the speaker. Adjust the level of the signal using the amplifier controls (Figure 2).
3. Relay the signal to another passive speaker using the Link connection (either the Speakon socket can be used as both are connected in parallel) (Figure 3).



INSTALLATION EXAMPLES

Positioning is intuitive. In situations with a seated or standing audience, certified stands are recommended; these should be placed on a flat surface with the power and signal cables positioned so that they cannot be walked on, are not stretched, and do not present a tripping or safety hazard.

Installation On A Tripod Stand

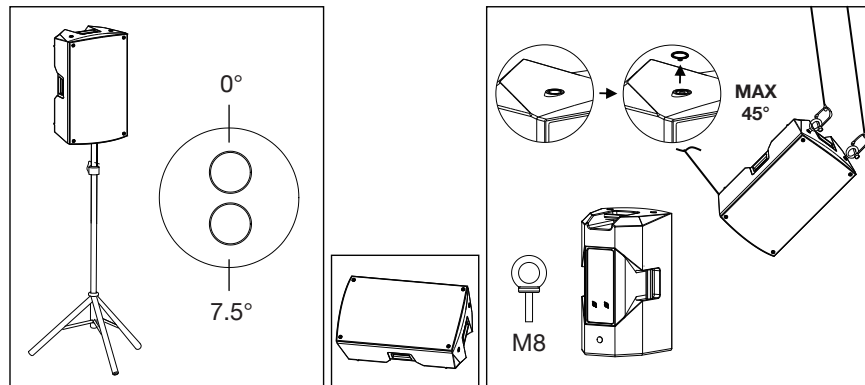
The speaker can be installed on an optional standard tripod stand with a 35 mm diameter pole. The maximum permissible height between the speaker base and the floor is 170 cm. Any other use requires additional fixing (not supplied). The tilt angle can be set between 0° and 7.5°.

Monitor Installation

The speaker cabinet has angled sides and can be placed on the floor as a live monitor.

Installation Suspended From Eyebolts

The speaker can also be suspended using M8 eyebolts. The rear eyebolt can be used to adjust the tilt angle (max 45°).



TROUBLESHOOTING

SYMPTOM	PROBLEM
The speaker does not produce any sound:	<ul style="list-style-type: none">• Check that the connections to the channel inputs are correct.• Check that the cables used are not damaged. Use only quality cables in good condition.• Check that the audio sources are switched on and show an output signal.
The speaker emits low or distorted sound:	<ul style="list-style-type: none">• Check the volume of the input source.• Check that the cables used are not damaged. Use only quality cables in good condition.
Presence of background noise:	<ul style="list-style-type: none">• Disconnect the speaker from the audio source• Check the signal at the source

SERVICE

In the event of a malfunction, ensure the problem is not related to operator error or system devices external to this unit. Once it is certain that the problem is related to the product, contact your warranty provider as described in the warranty section of this manual.

LIMITED WARRANTY

PRO ACOUSTICS, LLC. ("PRO ACOUSTICS") warrants this product to the original purchaser to be free from defects in materials and workmanship (subject to the terms set forth below) for the following periods from the date of purchase.

THIS WARRANTY COVERS THE LISTED PRODUCTS AGAINST DEFECTS IN MATERIALS OR WORKMANSHIP FOR THE FOLLOWING PERIOD

Warranty Terms	
Speakers	2 Years
Amplifiers & Electronics	1 Year
Microphones	1 Year
Accessories	1 Year

PRO ACOUSTICS will repair or replace (at PRO ACOUSTICS's option) this product or any defective parts (excluding electronics and amplifiers) in this product.

Your authorized PRO ACOUSTICS dealer will inspect the product, and if your dealer is not equipped to perform the repair of your PRO ACOUSTICS product, they will replace your product or return it to PRO ACOUSTICS for repair at their discretion. Proof of purchase in the form of a bill of sale or receipted invoice, which is evidence that this product is within the warranty period, must be presented to obtain warranty service.

This warranty is invalid if the factory applied serial number has been altered or removed from this product. This warranty is invalid if this product was not purchased from a PRO ACOUSTICS authorized dealer. Cosmetic damage or damage due to the accident, acts of God, misuse, abuse, negligence, commercial use, or modification of, or to any part of, the product are not covered in this warranty. This warranty does not cover damage due to improper operation, maintenance, installation, or attempted repair by anyone other than PRO ACOUSTICS or a PRO ACOUSTICS dealer that is authorized to do PRO ACOUSTICS warranty work. Any unauthorized repairs will void this warranty.

This warranty does not cover products sold as is.

REPAIRS OR REPLACEMENTS AS PROVIDED UNDER THIS WARRANTY ARE THE EXCLUSIVE REMEDY OF THE CONSUMER/PURCHASER. PRO ACOUSTICS U.S.A. SHALL NOT BE LIABLE FOR ANY INCIDENTAL OR CONSEQUENTIAL DAMAGES FOR BREACH OF ANY EXPRESS OR IMPLIED WARRANTY ON THIS PRODUCT. EXCEPT TO THE EXTENT PROHIBITED BY LAW, THIS WARRANTY IS EXCLUSIVE AND IN LIEU OF ALL OTHER EXPRESS AND IMPLIED WARRANTIES WHATSOEVER, INCLUDING BUT NOT LIMITED TO, THE WARRANTY OF MERCHANTABILITY AND FITNESS FOR A PRACTICAL PURPOSE.

This warranty gives you specific legal rights. You may have other rights which vary from state to state.

Specifications may change without notice.

PURE RESONANCE AUDIO®
(866) 676-7804
sales@pureresonanceaudio.com
www.PureResonanceAudio.com