



PURERESONANCEAUDIO®

WTX1 PLUG-ON WIRELESS SYSTEM

QUICK START GUIDE

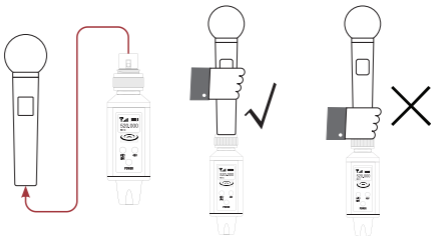


Caution: Please read this guide carefully before operating.
Damage caused by misuse is not covered by the warranty.

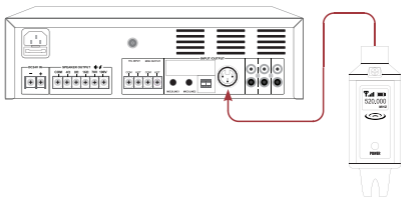
SPECIFICATIONS

Frequency Range	500 MHz - 520 MHz
Adjustable Channels	40
Channel Intervals	0.5 MHz
Mode	MIC / LINE
Frequency Response	40Hz - 20kHz
Dynamic Range	> 90 dB
Latency	< 3 ms
Signal-to-Noise Ratio	> 96 dB
Operating Range	98 ft (30 m) line-of-sight
Operating Voltage	Built-In 3.7V
Battery	1000mAh rechargeable lithium
Power Consumption	200 mW
Power Supply	USB-C

OPERATION

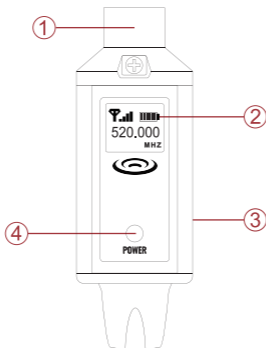


1. Plug the transmitter into an XLR dynamic microphone or battery-powered condenser microphone.



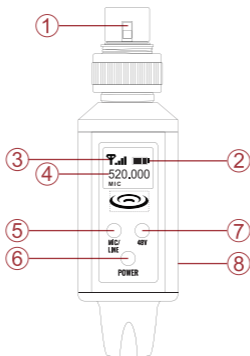
2. Plug the receiver into a mixer or mixer amplifier.

RECEIVER



1. **Connector:** Three-pin XLR male
2. **Battery Status:** Displays battery status. When the battery level is low, the icon will begin to flash
3. **Charging Port:** USB-C charging input
4. **Power Button:** Press for 1 second to turn on/off

TRANSMITTER



1. **Connector:** Three-pin XLR female
2. **Battery Status:** Displays battery status
3. **Signal Strength:** Displays audio signal strength
4. **Frequency:** Displays current frequency
5. **MIC Button:** Press for 3 seconds to switch to LINE mode
6. **Power Button:** Press for 1 second to turn on/off. Double-click to change frequency. Frequency will automatically save after 3 seconds.
7. **48V Button:** Press for 3 seconds to activate Phantom power
8. **Charging Port:** USB-C charging input

PURE RESONANCE AUDIO®

(866) 676-7804

sales@pureresonanceaudio.com

www.PureResonanceAudio.com