

# PYLE

PyleUSA.com



## *PWA20BT*

### In-Wall Wireless BT Streaming Stereo Amplifier

Audio Control Wall Plate Receiver  
with MP3/USB/SD Readers, LCD Display

USER MANUAL

### ***Power ON the Unit:***

The unit will be powered on via the included DC 12V/2A Power Adapter on the right side panel or on the back of the Unit.

### ***Bluetooth Operation Instruction:***

External devices which have a built-in Bluetooth feature can be connected to this amplifier wirelessly to play through the amplifier's speakers.

1. At first be sure that the amplifier is powered **ON**, and turn the volume to **MINI** position. It's better to pull the Bluetooth Antenna on at the back panel for better receiving.
2. Press the **BT/Line** button switch on the front panel, you will hear a "**POWER ON**" voice and "**PAIRING**". The unit is automatically ready to pair with your external device.
3. Turn **ON** the Bluetooth of your external devices like Smartphone, Computer, and others, etc.
4. Search for available Bluetooth devices within range of your external device and wait for your device to select "**BT-RY**" on the pairing devices lists.
5. If the pairing is successful and your device is connected, you will hear a "**Your Device is Connected**" prompt.
6. You can now play music on your external device through the amplifier.

### ***Aux (3.5mm) Input Connection & Operation:***

1. Once the unit is powered **ON**, any device connected to the wall plate's Aux (3.5mm) jack, via audio connection cable, will play automatically. As soon as the wall plate detects audio transmission via Aux Input, it will play -- overriding any Bluetooth connected audio signal transmission.

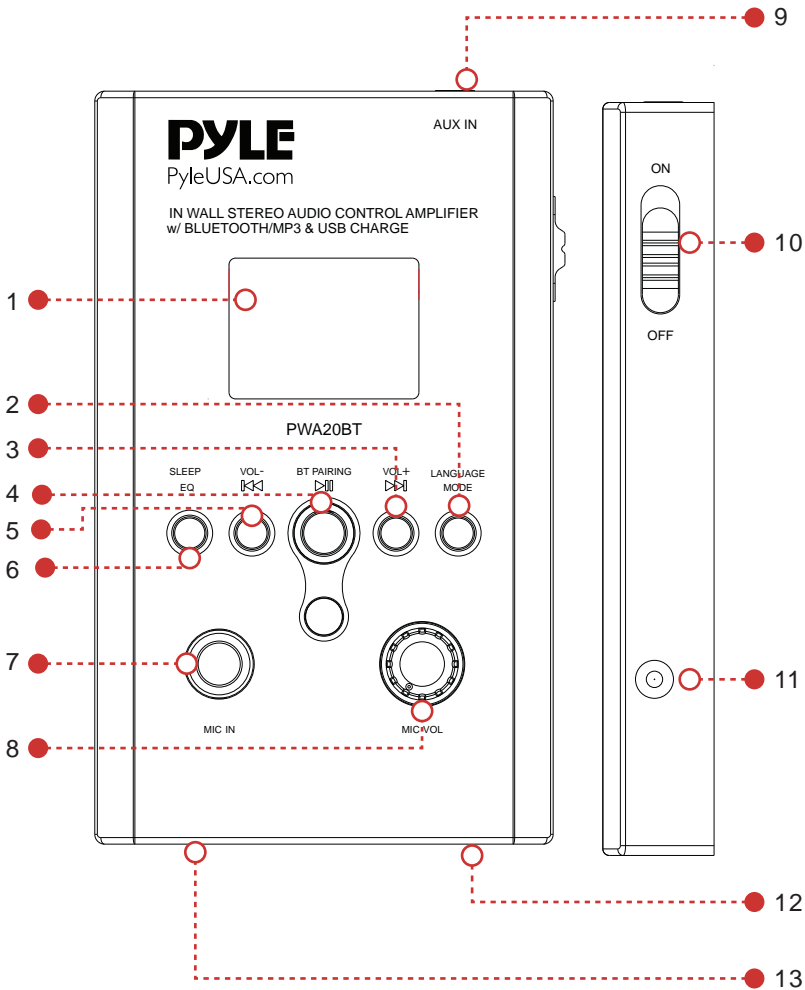
### ***Universal Compatibility:***

Pyle's In-Wall Bluetooth Stereo Amplifier fits virtually in all U.S. Electrical Gang Boxes. The universal standard wall plate size was designed to install conveniently in-wall, allowing and unlocking access to audio control like never before. A great choice for adding hassle-free audio control in homes, offices and businesses.

## Wall Plate Audio Amplifier Player:

The Pyle In-Wall Bluetooth Stereo Amplifier is a quick and easy way to get your music playing through a locally connected home theater or speaker system. The wall plate allows convenient audio streaming options including Bluetooth, MP3 (USB/SD), and Aux (3.5mm) input to connect even more external devices. Enjoy hassle-free audio transmission with the Pyle **PWA20BT** In-Wall Bluetooth Stereo Amplifier.

## Function Diagram:



## **Function Instruction:**

### **1. LCD Display**

Luxury Big LCD Display with Function & ID3 TAG Information

### **2. MODE/LANGUAGE: Integrated MODE Push Switch for Input**

Selection & Language Selection

Short press for **Audio Input (BT/USB/SD/AUX)**

Press and hold for 5 seconds for Language (English/Japanese/Korean/Chinese)

- **Automatically scan Audio Inputs:** USB/SD/AUX, but USB player is the priority, then SD player, and then Aux.
- Bluetooth plays only if you switch to Bluetooth mode.
- **Pay more attention:** Choose the language you want before operating the unit.

### **3. ▷▷ / VOL+: Push Switch for Next Song & Volume +**

Short Press for **Next Song**

Press and hold for 5 seconds for **Volume +**

### **4. ▷▷▷ / PAIRING: Push Switch for Play/Pause & BT Pairing**

Short Press for **Play/Pause**

Press and hold for 5 seconds for **BT Pairing**

### **5. ◀◀ / VOL- : Push Switch for Previous Song & Volume-**

Short Press for **Previous Song**

Press and hold for 5 seconds for **Volume-**

### **6. EQ/SLEEP: Push Switch for EQ (Equalizer) Function & SLEEP (Standy)**

Short Press for **Equalizer Effects** (JAZZ/CLASS/SOFT/PBB/NOR/POP/ROCK)

Press and hold for 5 seconds for **SLEEP** (Standy) or resume playing the music

### **7. MIC IN: 1/4" Microphone Input Connector Jack**

### **8. MIC VOL.: Rotary Microphone Volume Control**

### **9. AUX IN: (3.5mm) Audio Input Jack on top right, to connect & instantly stream audio from your favorite devices.**

### **10. ON/OFF: Power On/Off**

### **11. 12V DC IN: 12V DC/2A Port on the Right Side of the Unit**

### **12. USB Port: USB Card Reader & USB Charge (5V/1A)**

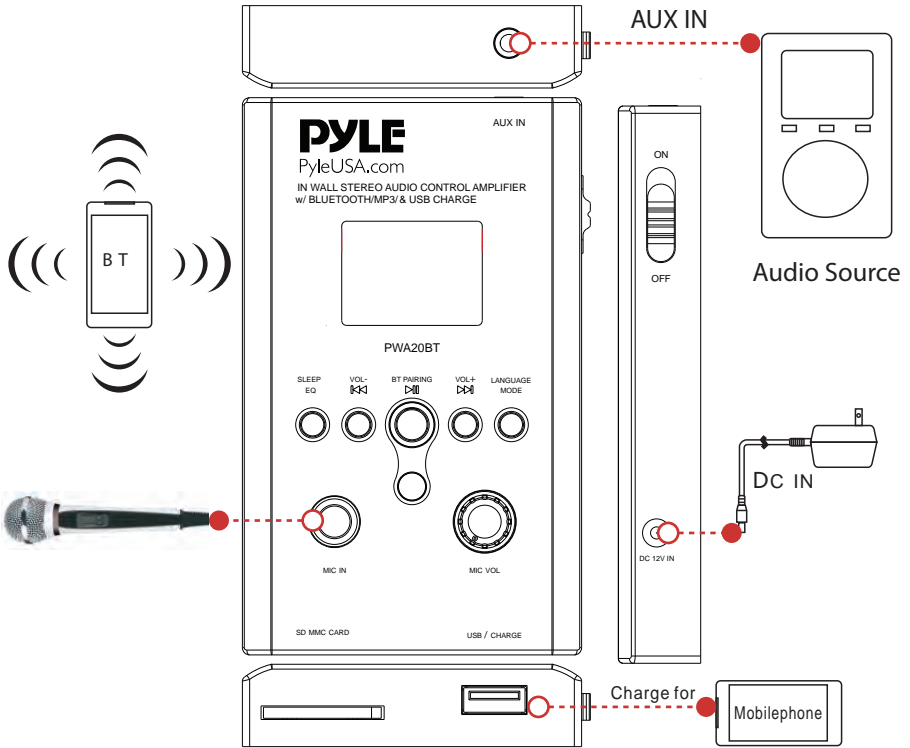
USB Port Charger for Smartphone, and for USB Reader Function

### **13. SD Port: SD Card Reader**

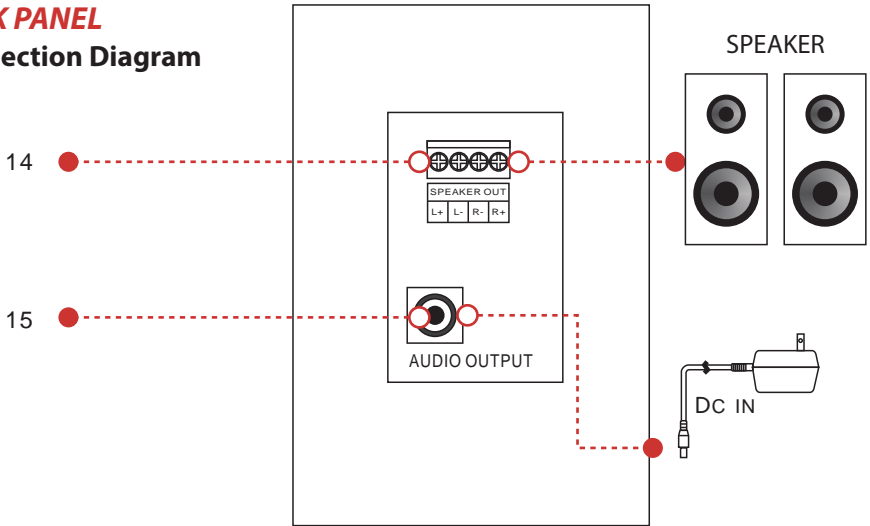
### **14. Speaker Output Terminal**

### **15. DC IN: DC (DC12V/2A) socket on the back of the unit**

# FRONT PANEL



# BACK PANEL Connection Diagram



## ***PWA20BT***

### **In-Wall Bluetooth Stereo Amplifier**

Audio Control Wall Plate Receiver with MP3/USB/SD Readers, LCD Display

#### **Features:**

- In-Wall, Wall Plate Audio/Music Control
- Bluetooth Wireless Streaming Ability
- USB Flash & SD Memory Card Readers
- USB Port Doubles as Device Charge Port
- Aux (3.5mm) Audio Input Jack
- Connect & Stream Audio from External Devices
- Terminal Block Speaker Connectors
- 1/4" Microphone Input
- ID3 Tag Song Readout Info Shows Song Artist/Title
- LCD Digital Display Panel
- Full Range Audio & Stereo Sound Transmission
- Simple Rotary Knob & Button Control Center
- Rear Panel Power Input for 'Hard-Wired' Installation
- Side Panel Power Input for Convenient 'Plug-in' Operation
- Universal Standard Wall Plate Size
- Fits U.S. Electrical Gang Boxes
- Lab Tested, Safety Certified & Approved

## **Bluetooth Connectivity:**

- Easy & Hassle-Free Wireless Connection
- Compatible with All of Today's Latest Devices  
(Smartphones, Tablets, Laptops, Computers, etc.)
- Bluetooth Version: 4.0
- Bluetooth Wireless Range: 30'+ ft.

## **What's in the Box:**

- Bluetooth Receiver
- Wall Adapter

## **Technical Specs:**

- Microphone Input Type: Dynamic
- Amplifier Type: Stereo Class-D
- Power ON/OFF Switch
- Digital Audio File Compatibility: MP3, WAV, AVI
- Maximum USB/SD Card Support: 64GB
- Power: 100/240V (12V DC Adapter)

# PYLE

PyleUSA.com



**VISIT US ONLINE:**

*Have a question?*

*Need service or repair?*

*Want to leave a comment?*

[PyleUSA.com/ContactUs](http://PyleUSA.com/ContactUs)

PYLE