

# Specifications

Mains Power Supply	
Supply Voltage; frequency	100-120 V, 220-240 V; 50 Hz/60 Hz
Power Consumption	max. 25 W
Microphone Inputs	
Connector	2 x XLR 3 F
Input Impedance	approx. 3 kΩ
Minimum Gain	+20 dB (PAD off)
Maximum Gain	+60 dB (PAD off)
Attenuation PAD switchable	off/-20 dB
Maximum Input Level (PAD off)	+8 dBu
Maximum Input Level (PAD on)	+28 dBu
Power Supply (P48, IEC 61938)	48 V, max. 10 mA, switchable on/off
Hi-Z	
Hi-Z Input active	switchable on/off
Connector	jack 6.3 mm (1/4"), mono, unbalanced (front)
Input Impedance	3.3 MΩ
Maximum Input Level	+21 dBu
Minimum Gain	0 dB (PAD off)
Maximum Gain	+40 dB (PAD off)
Bargraphs	
	per channel: -24 dBu to +24 dBu in 6 dB steps Peak Hold indication @ +24 dBu (hold time approx. 3 sec.)
Headphone Output	
Mono / Stereo	switchable
Connector	jack 6.3 mm (1/4"), stereo (front)
Volume Control	for left & right channel + Master
Output Impedance	approx. 2 Ω
Maximum Output Voltage	+20 dBu into 150 Ω load impedance
Outputs	
Connector	2 x XLR 3 M
Output Impedance	approx. 200 Ω
Maximum Output Voltage	+26 dBu into 1 kΩ load impedance
Ground Lift	switchable on/off
Amplifier	
Frequency Range	<10 Hz to >100 kHz (-3 dB@ 40 dB Gain)
High Pass Filter (HPF, 60 Hz, 12 dB/oct)	switchable on/off
General	
Dimensions (H x W x D)	89 mm x 463 mm x 242 mm
Weight	6.2 kg
Operating Conditions	0°C to +50°C; < 75% RH@ +40°C; non-condensing
Transport/Storage Conditions	-25°C to +70°C; < 95% RH; non-condensing
Working Altitude	< 2000 m

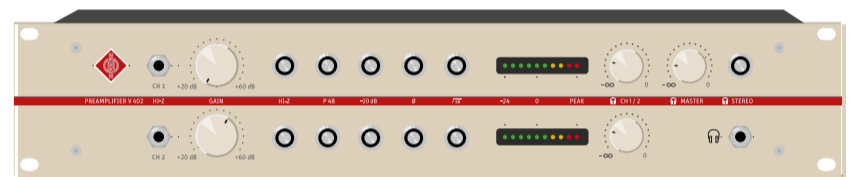
A complete list of specifications can be found on the product page at [www.neumann.com](http://www.neumann.com).



NEUMANN.BERLIN

## V 402

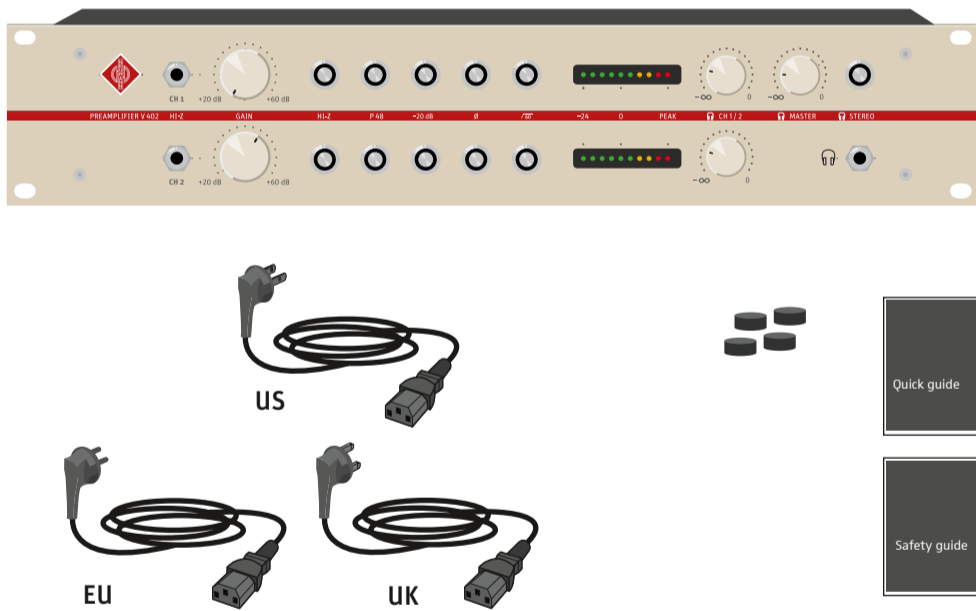
- Quick Guide
- Kurzanleitung
- Guide de démarrage rapide
- Guida rapida
- Instrucciones resumidas
- Instruções resumidas
- Beknopte handleiding
- Krótká instrukcja obsługi
- Snabbguide
- Kort vejledning
- Pikaohje
- Γρήγορος οδηγός
- Κίσα Κίλινυζ
- Краткая инструкция
- 简要说明



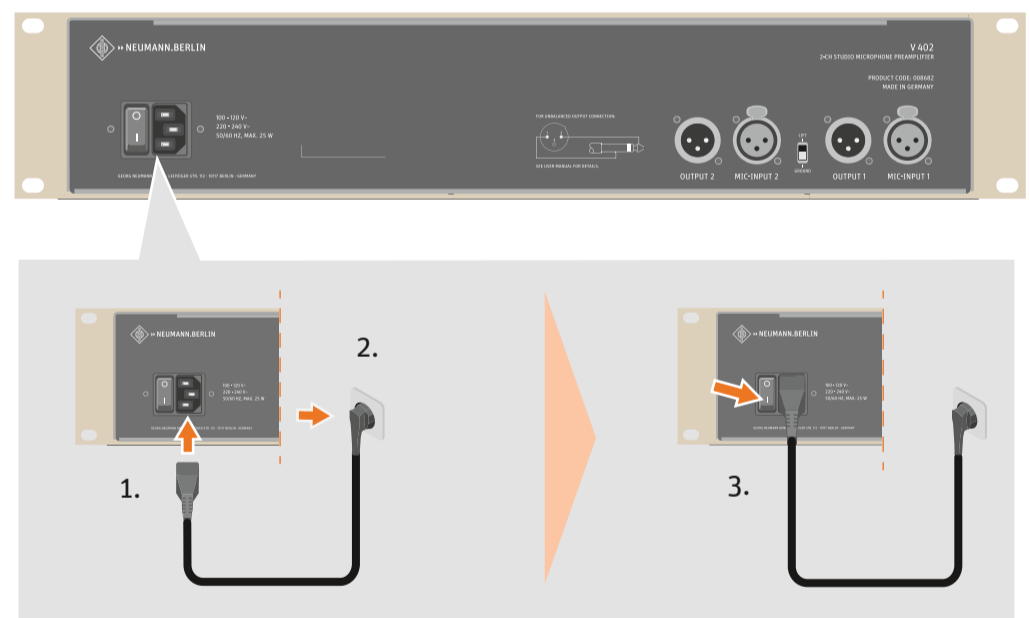
GEORG NEUMANN GMBH · LEIPZIGER STR. 112 · 10117 BERLIN · GERMANY  
TEL +49 (0)30 / 41 77 24 -0 · FAX -50 · HEADOFFICE@NEUMANN.COM · WWW.NEUMANN.COM

PUBL\_05/20 - 587421/A02

## In the box

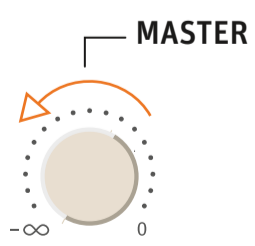


## Power

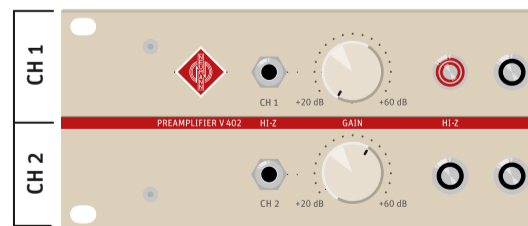


## Setup

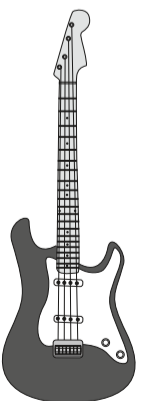
1. Reduce Volume



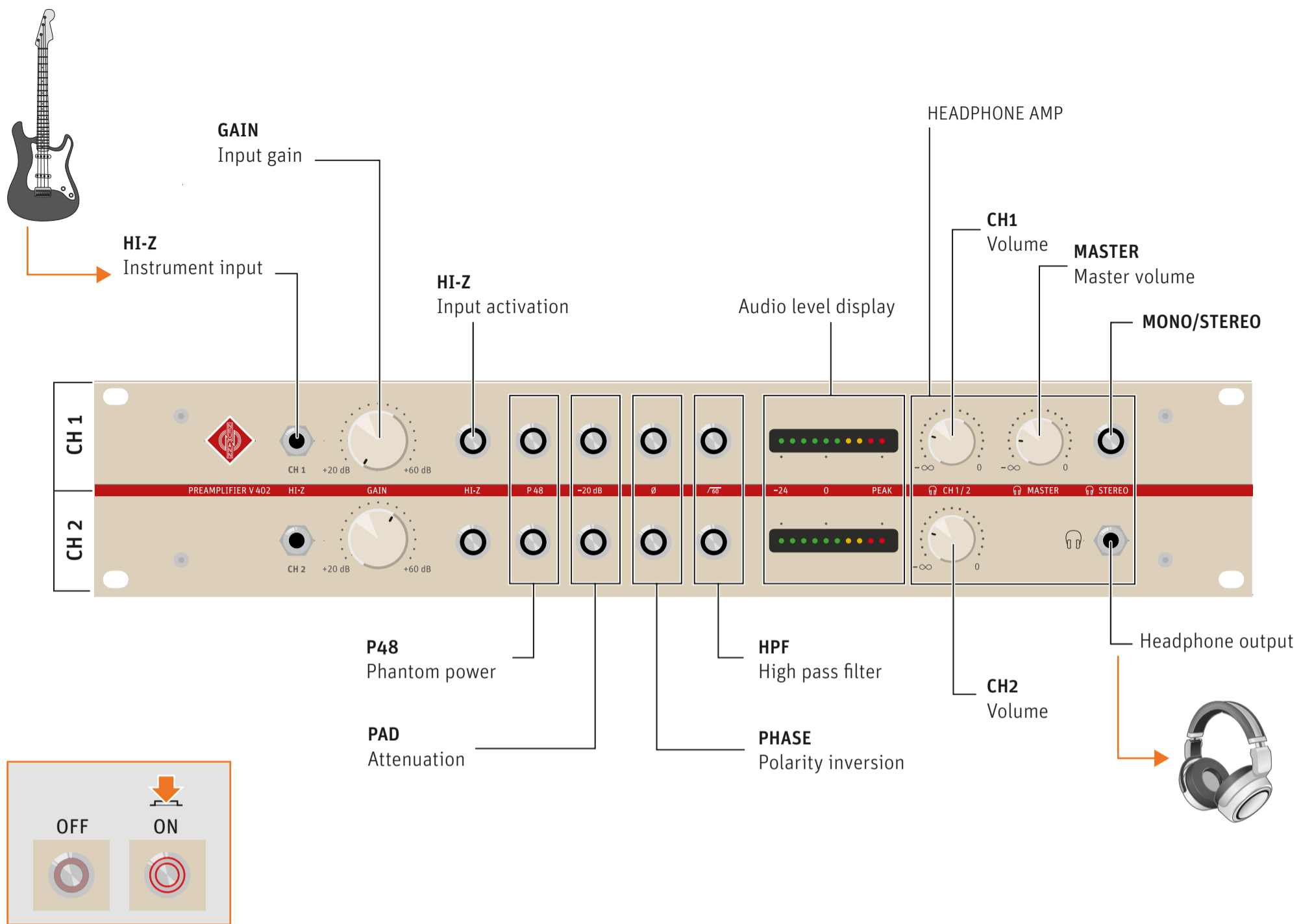
2. Switch ON



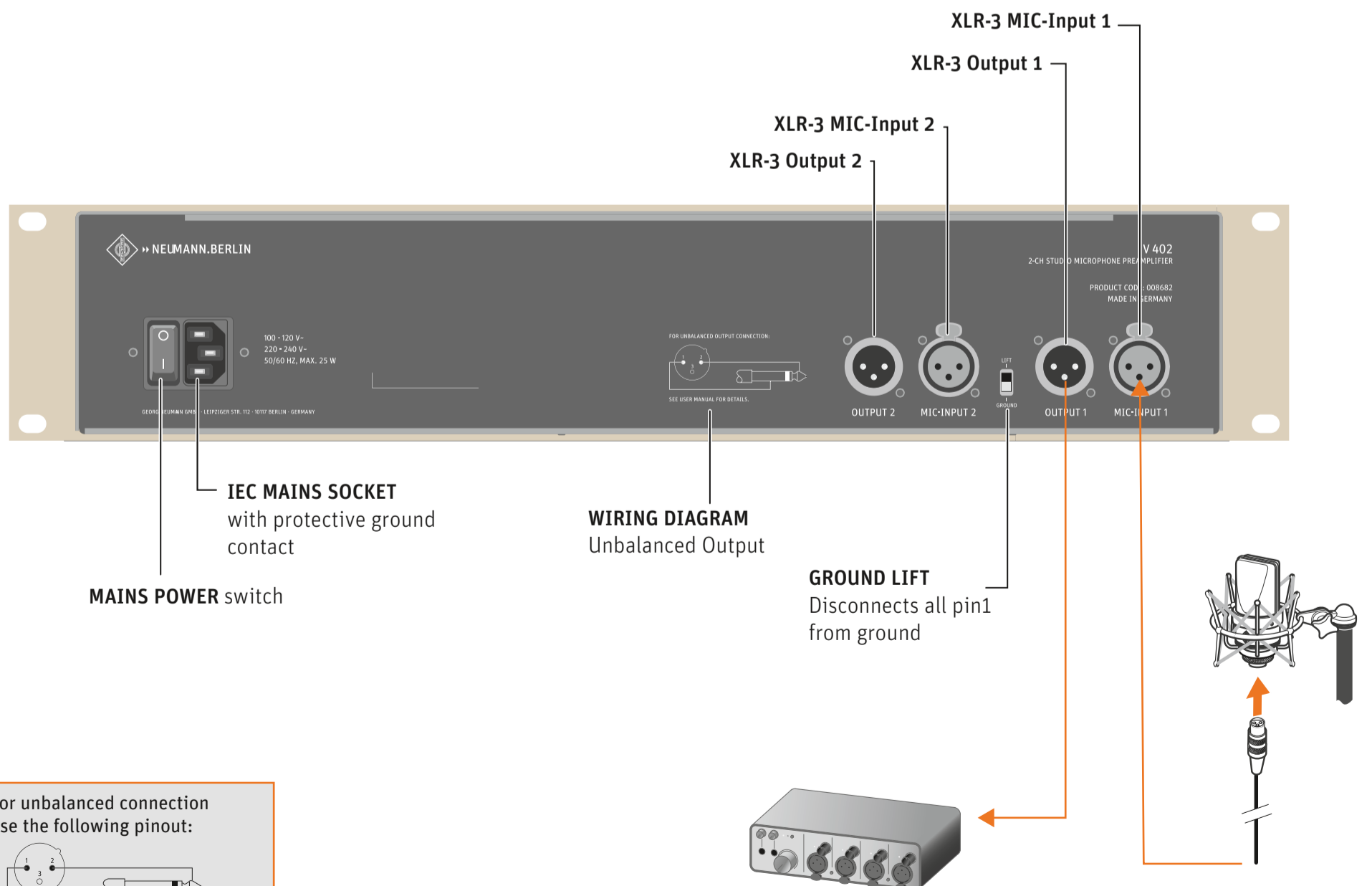
3. Connect



**Controls**



**Analog Audio Inputs & Outputs / Power**



**i** For unbalanced connection use the following pinout:

Grounding pin3 will result in increased THD