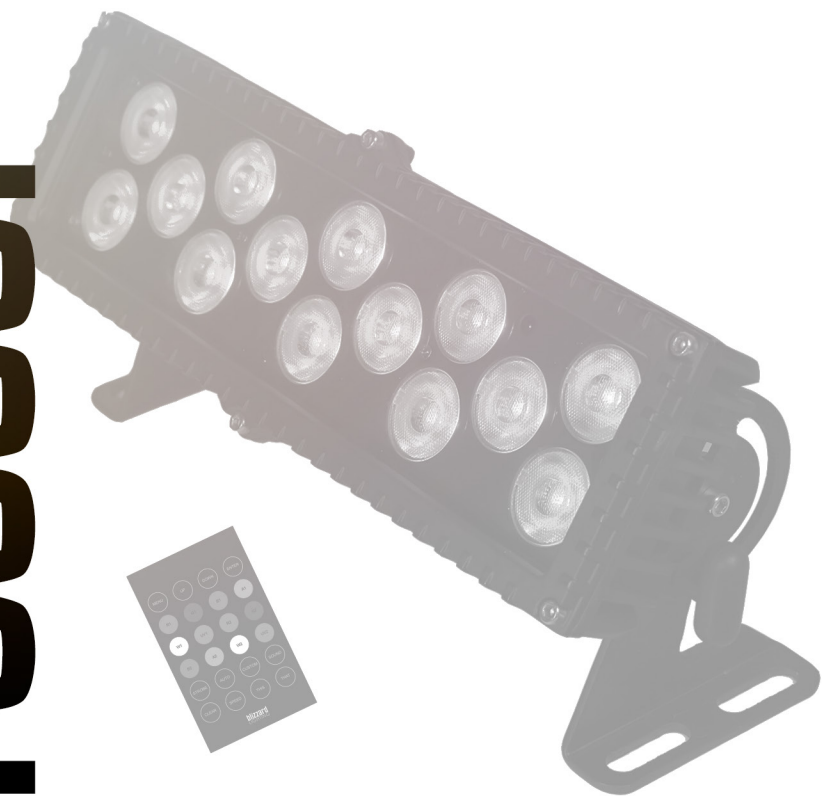


Masif.tm
architectural by blizzard lighting

fresco.



G2



IR remote



DMX512 equipped



IP65 rated

TABLE OF CONTENTS

Motif Fresco™	1
1. Getting Started	3
What's In The Box?	3
Getting It Out Of The Box	3
Powering Up!	3
Getting A Hold Of Us	3
Safety Instructions (Don't run with scissors!)	4
2. Meet The Motif Fresco™	5
Features	5
DMX Quick Reference	5
The Motif Fresco™ Pin-up Picture	6
3. Setup	7
Connecting A Bunch Of Motif Fresco™ Fixtures	7
Data/DMX Cables	7
Cable Connectors	8
3-Pin??? 5-Pin??? Huh?	8
Take It To The Next Level: Setting up DMX Control	8
Fixture Linking (Master/Slave Mode)	9
Mounting/Rigging	9
4. Operating Adjustments	10
Navigating The Control Panel	10
Control Panel Menu Structure	11
DMX Mode	11
Setting the DMX Address	11
Setting the DMX Channel Mode	11
Slave Mode	11
Dimming Mode Settings	12
Custom Programs	12
Auto Mode and Auto Speed	12
Color Calibration Settings	13
Custom Static Colors	13
Fixture Reset Functions	13
Data Sync Feature	13
Using the IR Remote Control	14
DMX Channel Values In-Depth	15
Dimensional Drawings	15
5. Appendix	16
A Quick DMX Lesson	16
Troubleshooting	16
Keeping Your Motif Fresco™ As Good As New	17
Returns (Gasp!)	17
Shipping Issues	17
Tech Specs	18

1. GETTING STARTED

What's In The Box?

- 1 x Motif Fresco™ LED Fixture
- 1 x DMX Signal Cable
- 1 x IP Rated AC Power Cord with Cable Cap
- This Lovely User Manual

Getting It Out Of The Box

Congratulations on purchasing one of the brightest, cutest little outdoor rated fixtures anywhere! Now that you've got your Motif Fresco™ (or hopefully, Fresco's!), you should carefully unpack the box and check the contents to ensure that all parts are present and in good condition. If anything looks as if it has been damaged in transit, notify the shipper immediately and keep the packing material for inspection. Again, please save the carton and all packing materials. If a fixture must be returned to the factory, it is important that the fixture be returned in the original factory box and packing.

Powering Up!

All fixtures must be powered directly off a switched circuit and **cannot be run off a rheostat (variable resistor) or dimmer circuit, even if the rheostat or dimmer channel is used solely for a 0% to 100% switch.**

AC Voltage Switch - Not all fixtures have a voltage select switch, so please verify that the fixture you receive is suitable for your local power supply. See the label on the fixture or refer to the fixture's specifications chart for more information. A fixture's listed current rating is its average current draw under normal conditions. Check the fixture or device carefully to make sure that if a voltage selection switch exists that it is set to the correct line voltage you will use.

Warning! Verify that the voltage select switch on your unit matches the line voltage applied. Damage to your fixture may result if the line voltage applied does not match the voltage indicated on the voltage selector switch. All fixtures must be connected to circuits with a suitable Ground (Earthing).

Getting A Hold Of Us

If something happens goes wrong, please visit www.blizzardlighting.com/ support and open a support ticket. We'll be happy to help, honest.

Disclaimer: The information and specifications contained in this document are subject to change without notice. Blizzard Lighting™ assumes no responsibility or liability for any errors or omissions that may appear in this user manual. Blizzard Lighting™ reserves the right to update the existing document or to create a new document to correct any errors or omissions at any time. You can download the latest version of this document from www.blizzardlighting.com.

Author:	Date:	Last Edited:	Date:
J. Thomas	12/9/2013	J. Thomas	11/16/2017

SAFETY INSTRUCTIONS



Please read these instructions carefully. They include important information about the installation, usage and maintenance of this product.

- Please keep this User Guide for future use. If you sell the unit to someone else, be sure that they also receive this User Guide.
- ALWAYS make sure that you are connecting to the proper voltage, and that the line voltage you are connecting to is not higher than that stated on the decal or rear panel of the fixture.
- Make sure there are no flammable materials close to the unit while operating.
- The unit must be installed in a location with adequate ventilation, at least 20in (50cm) from adjacent surfaces. Be sure that no ventilation slots are blocked.
- ALWAYS disconnect from the power source before servicing or replacing fuse and be sure to replace with same fuse size and type.
- ALWAYS secure fixture using a safety chain. NEVER carry the fixture by its cord. Use its carrying handles.
- DO NOT operate at ambient temperatures higher than 104°F (40°C).
- In the event of a serious operating problem, stop using the unit immediately. NEVER try to repair the unit by yourself. Repairs carried out by unskilled people can lead to damage or malfunction. Please contact the nearest authorized technical assistance center. Always use the same type spare parts.
- NEVER connect the device to a dimmer pack.
- Make sure the power cord is never crimped or damaged.
- Never disconnect the power cord by pulling or tugging on the cord.
- Avoid direct eye exposure to the light source while it is on.

Caution! There are no user serviceable parts inside the unit. Do not open the housing or attempt any repairs yourself. In the unlikely event your unit may require service, please open a support ticket at www.blizzardlighting.com/support.

2. MEET THE MOTIF FRESCO™ FIXTURE

MAIN FEATURES

- Exceptional color mixing via 14x 3W 3-in-1 LEDs
- Advanced heat sink design for zero fan noise
- IP65, outdoor rated
- User adjustable program speed & fade times
- 0-100% variable electronic dimmer
- User selectable 32-bit dimming
- Variable electronic strobe
- Tempered glass lens and watertight internal gaskets
- 10 custom color, and 3 custom program banks
- Flicker-free constant-current LED driver
- Custom global color calibration settings
- Easy to use OLED control panel /w touch sensitive buttons
- Sync custom settings between fixtures via DMX

ADDITIONAL FEATURES

- USITT DMX-512 (3/5/7-channel modes)
- IP rated power and DMX connections
- Durable cast aluminum housing and mounting brackets
- Optional IR remote control (sold separately)

DMX Quick Reference (3-Channel Mode)

Channel	What is does...
1	Red Intensity (0 <--> 100%)
2	Green Intensity (0 <--> 100%)
3	Blue Intensity (0 <--> 100%)

DMX Quick Reference (5-Channel Mode)

Channel	What is does...
1	Master Dimmer (0 <--> 100%)
2	Red Intensity (0 <--> 100%)
3	Green Intensity (0 <--> 100%)
4	Blue Intensity (0 <--> 100%)
5	Strobe (Slow <--> Fast)

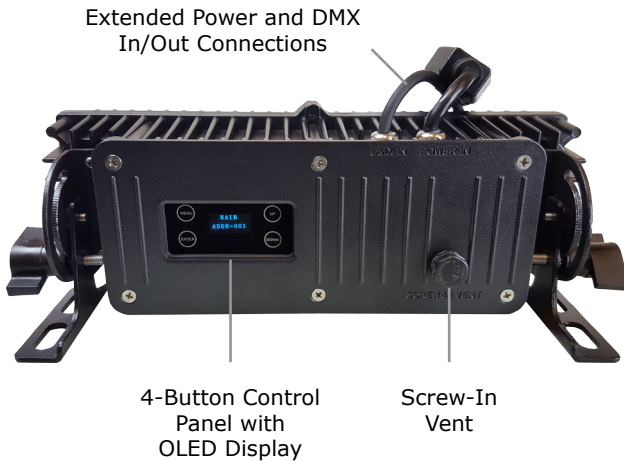
DMX Quick Reference (7-Channel Mode)

Channel	What is does...
1	Master Dimmer (0 <--> 100%)
2	Red Intensity (0 <--> 100%)
3	Green Intensity (0 <--> 100%)
4	Blue Intensity (0 <--> 100%)
5	Built-In Programs
6	Auto Speed (Slow <--> Fast)
7	Strobe (Slow <--> Fast)

Figure 1: The Motif Fresco™ Pin-Up Picture



Figure 2: The Rear Connections



3. SETUP



Before replacing a fuse, disconnect power cord. ALWAYS replace with the same type and rating of fuse.

Fuse Replacement

CAUTION! The Motif Fresco™ utilizes a high-output switch-mode power supply with an internal fuse. Under normal operating conditions, the fuse should not require replacement. The fuse is field replaceable, however it is an advanced procedure suited to qualified individuals. Should your fixture require replacement, please contact Blizzard Lighting for instructions, or to return your unit for service.

Connecting A Bunch of Motif Fresco™ Fixtures

You will need a serial data link to run light shows using a DMX-512 controller or to run shows on two or more fixtures set to sync in master/slave operating mode. The combined number of channels required by all the fixtures on a serial data link determines the number of fixtures the data link can support.

Fixtures on a serial data link must be daisy chained in one single line. Also, connecting more than 32 fixtures on one serial data link without the use of a DMX optically-isolated splitter may result in deterioration of the digital DMX signal. The maximum recommended cable-run distance is 500 meters (1640 ft). The maximum recommended number of fixtures on a serial data link is 32 fixtures.

Data/DMX Cabling

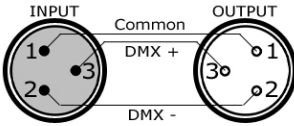
To link fixtures together you'll need data cables. You should use data-grade cables that can carry a high quality signal and are less prone to electromagnetic interference.

For instance, Belden© 9841 meets the specifications for EIA RS-485 applications. Standard microphone cables will "probably" be OK, but note that they cannot transmit DMX data as reliably over long distances. In any event, the cable should have the following characteristics:

2-conductor twisted pair plus a shield
Maximum capacitance between conductors – 30 pF/ft.
Maximum capacitance between conductor & shield – 55 pF/ft.
Maximum resistance of 20 ohms / 1000 ft.
Nominal impedance 100 – 140 ohms

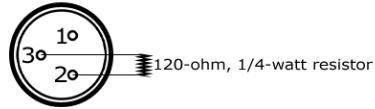
Cable Connectors

Cables must have a male XLR connector on one end and a female XLR connector on the other end. (Duh!)



A Word on Termination: DMX is a resilient communication protocol, however errors still occasionally occur. Termination reduces signal errors, and therefore best practices include use of a terminator in all circumstances. If you are experiencing problems with erratic fixture behavior, especially over long signal cable runs, a terminator may help improve performance.

To build your own DMX Terminator:
Obtain a 120-ohm, 1/4-watt resistor, and wire it between pins 2 & 3 of the last fixture. They are also readily available from specialty retailers.



CAUTION: Do not allow contact between the common and the fixture's chassis ground. Grounding the common can cause a ground loop, and your fixture may perform erratically. Test cables with an ohm meter to verify correct polarity and to make sure the pins are not grounded or shorted to the shield or each other.

3-Pin??? 5-Pin??? Huh?!?

If you use a controller with a 5-pin DMX output connector, you will need to use a 5-pin to 3-pin adapter. They are widely available over the internet and from specialty retailers. If you'd like to build your own, the chart below details a proper cable conversion:

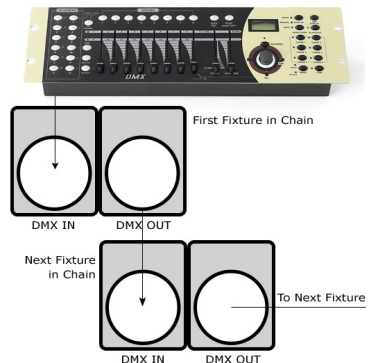
Conductor	3-Pin Female (Output)	5-Pin Male (Input)
Ground/Shield	Pin 1	Pin 1
Data 1- (Primary Data Link)	Pin 2	Pin 2
Data 1+ (Primary Data Link)	Pin 3	Pin 3
Data 2- (Optional Secondary Data Link)	Pin 4	Pin 4
Data 2+ (Optional Secondary Data Link)	Pin 5	Pin 5

Take It To The Next Level: Setting Up DMX Control

Step 1: Connect the male connector of the DMX cable to the female connector (output) on the controller.

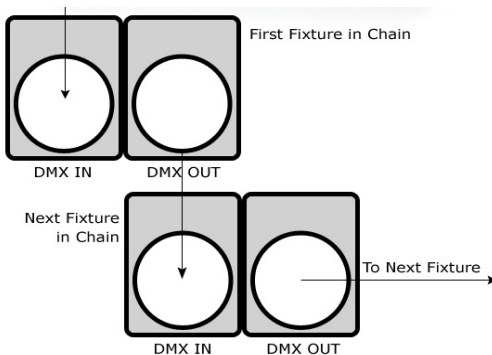
Step 2: Connect the female connector of the DMX cable to the first fixture's male connector (input). *Note:* It doesn't matter which fixture address is the first one connected. We recommend connecting the fixtures in terms of their proximity to the controller, rather than connecting the lowest fixture number first, and so on.

Step 3: Connect other fixtures in the chain from output to input as above. Place a DMX terminator on the output of the final fixture to ensure best communication.



Fixture Linking (Master/Slave Mode)

1. Connect the (male) 3-pin connector side of the DMX cable to the output (female) 3-pin connector of the first fixture.
2. Connect the end of the cable coming from the first fixture which will have a (female) 3-pin connector to the input connector of the next fixture consisting of a (male) 3-pin connector. Then, proceed to connect from the output as stated above to the input of the following fixture and so on.



A quick note: Often, the setup for Master-Slave and Standalone operation requires that the first fixture in the chain be initialized for this purpose via either settings in the control panel or DIP-switches. Secondly, the fixtures that follow may also require a slave setting.

Check the **“Operating Adjustments”** section in this manual for complete instructions for this type of setup and configuration.

Mounting & Rigging

This fixture may be mounted in any SAFE position provided there is enough room for ventilation.

It is important never to obstruct the fan or vents pathway. Mount the fixture using a suitable “C” or “O” type clamp. The clamp should be rated to hold at least 10x the fixture’s weight to ensure structural stability. Do not mount to surfaces with unknown strength, and ensure properly “rated” rigging is used when mounting fixtures overhead.

Adjust the angle of the fixture by loosening both knobs and tilting the fixture. After finding the desired position, retighten both knobs.

- When selecting installation location, take into consideration lamp replacement access (if applicable) and routine maintenance.
- Safety cables MUST ALWAYS be used.

4. OPERATING ADJUSTMENTS

The Control Panel

All the goodies and different modes possible with the Motif Fresco™ are accessed by using the control panel on the rear of the fixture. There are 4 control buttons which allow you to navigate through the various control panel menus.

<MENU>

Is used to navigate to the previous higher-level menu item.

<ENTER>

Is used to select and confirm/store the current selection.

<UP>

Scrolls through menu items and numbers in ascending order.

<DOWN>

Scrolls through menu items and numbers in descending order.



The control panel display shows the menu items you select from the menu map on page #11. When a menu function is selected, the display will show immediately the first available option for the selected menu function. To select a menu item, press **<ENTER>**.

Use the **<UP>** and **<DOWN>** buttons to navigate the menu options. Press the **<ENTER>** button to select the menu function currently displayed, or to enable a menu option. To return to the previous option or menu without changing the value, press the **<MENU>** button.

Control Panel Menu Structure

ADDRESS	001-512	To choose the DMX address		
STATIC	R	Red intensity (0% <--> 100%)		
	G	Green intensity (0% <--> 100%)		
	B	Blue intensity (0% <--> 100%)		
	SHUT	Flash/strobe speed (0-255)		
SET	CAL	<ENTER>	To set global intensity levels of each color + USE: YES/NO	
	CHMD	7CH	To run in 7-channel mode	
		5CH	To run in 5-channel mode	
		3CH	To run in 3-channel mode	
	DIM (dimming)	LIN	Linear dimming curve	
		SQR	Square law curve	
		ISQR	Inverse square law curve	
		SCUR	S-curve	
		LIN.	Linear dimming curve (smooth)	
		SQR.	Square law curve (smooth)	
		ISQR.	Inverse square law curve (smooth)	
	SCUR.	S-curve (smooth)		
	LOCK	<ENTER>	YES/NO, Unlock: <MENU>, <UP>, <DOWN>, <ENTER>, (3x)	
CUSTOM	CT01-CT10	<ENTER>	R/G/B adjustments for custom color banks 01-10	
AUTO	AT01-AT05	<ENTER>	Auto programs 1-5	
	ATSP	<ENTER>	Auto Speed	
	CHS1	<ENTER>	Custom program 1	
	CHS2	<ENTER>	Custom program 2	
	CHS3	<ENTER>	Custom program 3	
PROGRAM	CHS1-CHS3 Custom programs 1-3.	SC01-SC25 25 scenes for each custom program.	R (0-255)	SHUT (strobe, 0-255)
			G (0-255)	AUTO (None, AT01-AT05)
			B (0-255)	ATSP (speed, 0-255)
				TIME (duration, 0-255)
				WAIT (before fade, 0-255)
				USE (use scene, YES/NO)
INFO	SOFT	<ENTER>	Software version information	
	POW	<ENTER>	Current automated overheat protection level (100%/80%/50%)	
LOAD	ST L	Restore factory settings		
	PR L	Restore factory program settings		
SEND	YES/NO	Sync settings between fixtures via DMX		

DMX Mode

Allows the unit to be controlled by any universal DMX controller.

Setting the DMX Address:

1.) The default mode for the fixture is DMX, which appears as **001** on the LED readout. To select a different DMX address, using the <MENU> button, select **ADDRESS**, then hit <ENTER>. Use the <UP/DOWN> buttons to select the correct address, then hit <ENTER> to confirm.

Setting the DMX Channel Mode:

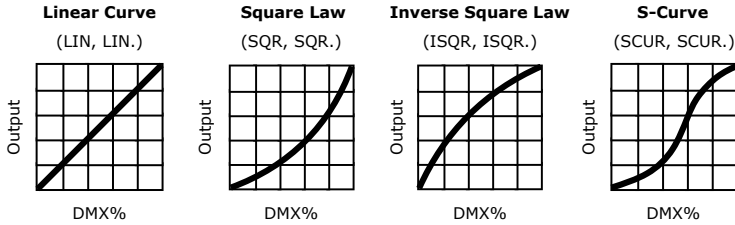
1.) To select a DMX channel mode, press the <MENU> button, then use the <UP/DOWN> buttons until the display reads **SET** and press the <ENTER> button. Then use the <UP/DOWN> buttons until the display reaches **CHMD**, and press <ENTER>. Now press the <UP/DOWN> buttons again to highlight your desired DMX channel mode, and press the <ENTER> button to confirm.

Slave Mode:

1.) Daisy chain the fixtures DMX in/out, having the controller at the beginning of the line.
2.) There is nothing else to it! The first fixture in the DMX chain is the master fixture, and the following fixtures will follow the master.

Dimming Mode Settings:

Allows users to set the fixture to use 1 of 4 (x2) dimming curve settings for smoother (and slower) dimming capabilities. In the control panel menu, there are two settings for each curve that are distinguishable from one another by the trailing dot.



*The curve settings with the trailing dot adds a bit more delay to the curve for a smoother effect.

- 1.) Use the **<MENU>** and **<UP/DOWN>** buttons to navigate to **SET** and press **<ENTER>**, then **<UP/DOWN>** buttons again to scroll to **DIM**, and press the **<ENTER>** button.
- 2.) Now use the **<UP/DOWN>** buttons to highlight either **LIN** (Linear), **SQR** (Square), **ISQR** (Inverse Square), **SCUR** (S-Curve), **LIN.** (Smooth Linear), **SQR.** (Smooth Square), **ISQR.** (Smooth Inverse Square), or **SCUR.** (Smooth S-Curve), then hit **<ENTER>**.

Custom Programs:

Allows users to create up to 3 customizable, 20 scene programs.

Creating A Custom Program:

- 1.) Use the **<MENU>** and **<UP/DOWN>** buttons to navigate to **PROGRAM**, and press **<ENTER>**.
- 2.) Now use the **<UP/DOWN>** buttons to highlight your choice of either **CHS1**, **CHS2**, or **CHS3** and press **<ENTER>**.
- 3.) Start with editing scene 1 (**SC01**), customizing it to your liking by using the choices outlined in the table below. You can insert any of its 5 built-in auto programs (**AT01-AT05**), and adjust its speed (**ATSP 0-255**), and also set the duration (in seconds) before moving on to the next scene (**TIME 0-255**). You can also add a fade in effect to the start of this scene (**WAIT 0-255**), and/or strobe (**SHUT 0-255**). Finally, if you want to use this scene in your program, *be sure to enable it (USE: YES/NO)*.
- 4.) Repeat the above process to create up to 20 scenes in each of the 3 customizable programs.

R (0-255) - Red Intensity	AUTO (AT01-AT05) - Auto Programs	IMPORTANT: <i>If USE is set to NO, or TIME is set to 0, the scene will not run!</i>
G (0-255) - Green Intensity	ATSP (0-255) - Auto Speed (fast - slow)	
B (0-255) - Blue Intensity	TIME (0-255) - Scene Time (seconds)	
UV (0-255) - UV Intensity	WAIT (0-255) - Fade In (fast - slow)	
SHUT (0-255) - Strobe (slow - fast)	USE (YES/NO) Use Scene in Program?	

Running A Custom Program:

- 1.) To view your newly created lighting masterpiece, use the **<MENU>** and **<UP/DOWN>** buttons to navigate to **AUTO**, and press **<ENTER>**.
- 2.) Use the **<UP/DOWN>** buttons to highlight your choice of either **CHS1**, **CHS2**, or **CHS3** and press **<ENTER>**.

Auto Mode and Auto Speed:

Set single or Master/Slaved units to run in sound active or auto mode at user selectable speeds.

Auto Mode:

- 1.) Use the **<MENU>** and **<UP/DOWN>** buttons to navigate to **AUTO**, and press the **<ENTER>** button.
- 2.) Now use the **<UP/DOWN>** buttons to highlight any program ranging from **AT01-AT05**, and press **<ENTER>**.

Auto Speed:

- 1.) Use the **<MENU>** and **<UP/DOWN>** buttons to navigate to **AUTO** and press **<ENTER>**, then with the **<UP/DOWN>** buttons navigate to **ATSP**, and press the **<ENTER>** button.
- 2.) Make a selection from **0-255**, and press **<ENTER>** to choose a speed (slow <-> fast).

Color Calibration Settings:

Allows the user to setup and save 1 customized R/G/B color balance setting and save it for future use. This custom setting is global, and it will effect all modes.

- 1.) Use the **<MENU>** and **<UP/DOWN>** buttons to navigate to **SET** and press **<ENTER>**, then on while **CAL**, push **<ENTER>** again.
- 2.) Use the **<UP/DOWN>** buttons to highlight either **R** (Red Level), **G** (Green Level), or **B**, then hit **<ENTER>**.
- 3.) Now using the **<UP/DOWN>** buttons, select the maximum level for each color between 000-255 (000=off), and hit **<ENTER>** to confirm your choice.
- 4.) You have now just setup and saved a custom global color calibration setting that you can use at your convenience. To use your custom setting now (or later), press the **<UP/DOWN>** buttons to reach **USE**, and press **<ENTER>**. Then choose either **YES** or **NO** and press **<ENTER>**. When you select **YES**, it enables this custom color calibration globally, and when choosing **NO** the fixture will continue to use the default color calibration settings. Your customized settings will be saved for later use even after powering off the fixture. It can be altered to your liking at any time. Just remember to return to this setting to either enable or disable it when needed.

Custom Static Colors:

Allows the user to create and save custom static colors for use in standalone or DMX mode.

Static Color Mixing (single)

- 1.) Use the **<MENU>** and **<UP/DOWN>** buttons to navigate to **STATIC** and press **<ENTER>**, then **<UP/DOWN>** buttons to select R/G/B, and push **<ENTER>** to confirm your selection. Then in adjust the values (0-255) to your liking and press **<ENTER>** to save.
- 2.) In the same manner, you can select **SHUT** to add a strobe effect.

Mix and Save Custom Color Banks (1-10)

- 1.) Use the **<MENU>** and **<UP/DOWN>** buttons to navigate to **CUSTOM** and press **<ENTER>**, then **<UP/DOWN>** buttons to select a color bank from **CT01-CT10**, and push **<ENTER>** to confirm your selection.
- 2.) Now use the **<UP/DOWN>** buttons to highlight either **R** (Red Level), **G** (Green Level), or **B** (Blue Level), then hit **<ENTER>**.
- 3.) Finally, using the **<UP/DOWN>** buttons, select the maximum level for each color between 000-255 (000=off), and hit **<ENTER>** to confirm your choice(s).
- 4.) These 10 custom colors can be accessed and edited to your liking at any time, and will be saved even after powering off the fixture.

Fixture Reset Functions:

Allows users to reset the fixture to factory default settings, without losing customized settings, or reset the custom programs exclusively.

- 1.) Use the **<MENU>** and **<UP/DOWN>** buttons to navigate to **LOAD** and press **<ENTER>**, then use the **<UP/DOWN>** buttons to highlight **ST L** or **PR L**, and press **<ENTER>**.
- 2.) Use the **<UP/DOWN>** buttons to highlight either **YES** or **NO**, then press **<ENTER>**.
- 3.) The **ST L** reset function will reset all default values *with the exception of* those in **ADDRESS**, **CUSTOM** (custom colors), and **PROGRAM** (custom scenes and programs).
- 4.) The **PR L** reset function will only reset all customized program settings found in the **PROG** settings (custom scenes and programs).

Data Sync Feature:

Users can transfer their custom settings from one fixture to another via DMX.

- 1.) Disconnect fixtures from any DMX controllers, and link them together via DMX in/out.
- 2.) On the sending fixture (DMX out), navigate the main menu using the **<UP/DOWN>** buttons to reach **SEND**, and press the **<ENTER>** button.
- 3.) Select **YES**, and press the **<ENTER>** button to begin the transfer.
- 4.) Information for **ADDRESS**, or **CAL** (global intensity) will not be sent.
- 5.) After the data has been transferred, the receiving fixture will be automatically be reset.

Using the IR Remote Control *(sold separately)*

All the goodies and different modes possible with the Motif Fresco™ can be accessed by using the IR remote control *(sold separately.)*

The IR remote control is simple to use. It offers the same functionality of the LED control panel, with the addition of quick access shortcut buttons.

<MENU>

Used to navigate to the previous higher-level menu item.

<UP>

Scrolls through menu items and numbers in ascending order.

<DOWN>

Scrolls through menu items and numbers in descending order.

<ENTER>

Is used to select and confirm/store the current selection.

<R1>, <G1>, <B1>

Shortcut keys used to access the color settings for Red, Green, and Blue.

<STROBE>

Shortcut key used to access strobe settings. After pressing this button you can use the **<UP/DOWN>** and **<ENTER>** buttons to modify the strobe (slow <--> fast).

<AUTO>

Shortcut key used to access auto mode settings. After pressing this button you can use the **<UP/DOWN>** and **<ENTER>** buttons to access its built-in auto programs.

<SOUND>

Shortcut key used to access sound active mode.

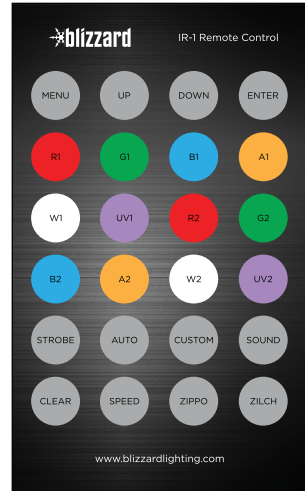
<SPEED>

Shortcut key used to access speed settings. After pressing this button you can use the **<UP/DOWN>** and then the **<ENTER>** button to select a speed value (fast <--> slow).

<CLEAR>

This will clear the modified values of **<R1>**, **<G1>**, **<B1>**, **<STROBE>**, and reset the fixture.

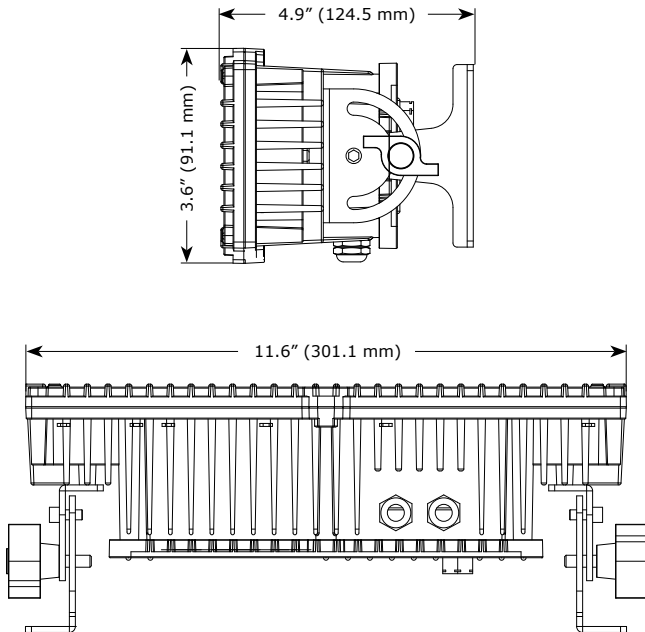
**Some of the buttons on this remote are reserved for future use.*



DMX Values In-Depth (3/5/7-Channel Modes)

3CH	5CH	7CH	Value	What It Does
--	1	1	000 <--> 255	Dimmer (0% <--> 100%)
1	2	2	000 <--> 255	Red Intensity (0% <--> 100%)
2	3	3	000 <--> 255	Green Intensity (0% <--> 100%)
3	4	4	000 <--> 255	Blue Intensity (0% <--> 100%)
--		5	000 <--> 029 030 <--> 059 060 <--> 089 090 <--> 119 120 <--> 149 150 <--> 179 180 <--> 209 210 <--> 255	Built-In Programs No Function Auto 1 - R, G, B, RG, RB, GB Auto 2 - R↑, R↓, G↑, G↓, B↑, B↓ Auto 3 - R↑G↑, R↓G↓, R↑B↑, R↓B↓, B↓G↓, B↑G↑ Auto 4 - RGB↑, RGB↓ Auto 5 - B, BG↑, BG, B↓G, G, GR↑, GR, G↓R, R, RB↑, RB, R↓B Chase 1 Chase 2
--	--	6	000 <--> 255	Auto Speed (slow <--> fast)
--	5	7	000 <--> 005 006 <--> 115 116 <--> 130 131 <--> 170 171 <--> 210 211 <--> 250 251 <--> 255	Strobe No function Normal strobe (slow <--> fast) Random strobe (slow <--> fast) Electronic sine wave (slow <--> fast) Opening pulse (slow <--> fast) Closing pulse (slow <--> fast) No function

Dimensional Drawings



5. APPENDIX

A Quick Lesson On DMX

DMX covers (and is an abbreviation for) Digital MultipleXed signals. It is the most common communications standard used by lighting and related stage equipment.

DMX provides up to 512 control “channels” per data link. Each of these channels was originally intended to control lamp dimmer levels. You can think of it as 512 faders on a lighting console, connected to 512 light bulbs. Each slider’s position is sent over the data link as an 8-bit number having a value between 0 and 255. The value 0 corresponds to the light bulb being completely off while 255 corresponds to the light bulb being fully on.

DMX data is transmitted at 250,000 bits per second using the RS-485 transmission standard over two wires. As with microphone cables, a grounded cable shield is used to prevent interference with other signals.

There are five pins on a DMX connector: a wire for ground (cable shield), two wires for “Primary” communication which goes from a DMX source to a DMX receiver, and two wires for a “Secondary” communication which goes from a DMX receiver back to a DMX source. Generally, the “Secondary” channel is not used so data flows only from sources to receivers. Hence, most of us are most familiar with DMX-512 as being employer over typical 3-pin “mic cables,” although this does not conform to the defined standard.

DMX is connected using a daisy-chain configuration where the source connects to the input of the first device, the output of the first device connects to the input of the next device, and so on. The standard allows for up to 32 devices on a single DMX link.

Each receiving device typically has a means for setting the “starting channel number” that it will respond to. For example, if two 6-channel fixtures are used, the first fixture might be set to start at channel 1 so it would respond to DMX channels 1 through 6, and the next fixture would be set to start at channel 7 so it would respond to channels 7 through 12.

Troubleshooting

Symptom	Solution
Fixture Auto-Shut Off	Check the fan in the fixture. If it is stopped or moving slower than normal, the unit may have shut itself off due to high heat. This is to protect the fixture from overheating. Clear the fan of obstructions, or return the unit for service.
Beam is Dim	Check optical system and clean excess dust/grime. Also ensure that the 220V/110V switch is in the correct position, if applicable.
No Light Output	Check to ensure fixture is operating under correct mode, IE sound active/auto/DMX/Etc., if applicable. Contact service for more information.
Chase Speed Too Fast/Slow	Check to ensure proper setup of speed adjustment.
No Power	Check fuse, AC cord and circuit for malfunction.
Fixture Not Responding / Responding Erratically	Make sure all connectors are seated properly and securely. Use Only DMX Cables. Install a Terminator. Check all cables for defects. Reset fixture(s).

Keeping Your Motif Fresco™ As Good As New

The fixture you've received is a rugged, tough piece of pro lighting equipment, and as long as you take care of it, it will take care of you. That said, like anything, you'll need to take care of it if you want it to operate as designed. You should absolutely keep the fixture clean, especially if you are using it in an environment with a lot of dust, fog, haze, wild animals, wild teenagers or spilled drinks.

Cleaning the optics routinely with a suitable glass cleaner will greatly improve the quality of light output. Keeping the fans free of dust and debris will keep the fixture running cool and prevent damage from overheating.

In transit, keep the fixtures in cases. You wouldn't throw a prized guitar, drumset, or other piece of expensive gear into a gear trailer without a case, and similarly, you shouldn't even think about doing it with your shiny new light fixtures.

Common sense and taking care of your fixtures will be the single biggest thing you can do to keep them running at peak performance and let you worry about designing a great light show, putting on a great concert, or maximizing your client's satisfaction and "wow factor." That's what it's all about, after all!

Returns (Gasp!)

We've taken a lot of precautions to make sure you never even have to worry about sending a defective unit back, or sending a unit in for service. But, like any complex piece of equipment designed and built by humans, once in a while, something doesn't go as planned. If you find yourself with a fixture that isn't behaving like a good little fixture should, you'll need to obtain a Return Authorization (RA).

Don't worry, this is easy. Just open a support ticket at www.blizzardlighting.com/support, and we'll issue you an RA. Then, you'll need to send the unit to us using a trackable, pre-paid freight method. We suggest using USPS Priority or UPS. Make sure you carefully pack the fixture for transit, and whenever possible, use the original box & packing for shipping.

When returning your fixture for service, be sure to include the following:

- 1.) Your contact information (Name, Address, Phone Number, Email address).
- 2.) The RA# issued to you
- 3.) A brief description of the problem/symptoms.

We will, at our discretion, repair or replace the fixture. Please remember that any shipping damage which occurs in transit to us is the customer's responsibility, so pack it well!

Shipping Issues

Damage incurred in shipping is the responsibility of the shipper, and must be reported to the carrier immediately upon receipt of the items. Claims must be made within seven (7) days of receipt.

Tech Specs!

Weight & Dimensions					
Width	11.6 inches (301.1 mm)				
Depth	3.6 inches (91.1 mm)				
Height	4.9 inches (124.5 mm)				
Weight	6.3 lbs (2.86 kg)				
Power					
Operating Voltage	100-264VAC, 47-63Hertz				
Power Consumption	44W, .68A				
Light Source					
LED	14x 3-watt TRI-color LEDs, 100,000 hours.				
Optical					
Beam Angle	28 degrees				
Luminous Intensity	Lux/meter	Red	Green	Blue	All
	2m	515	820	900	2,010
Thermal					
Max. Operating Temp.	104 degrees F (40 degrees C) ambient				
Control					
Protocol	USITT DMX-512				
DMX Channels	3/5/7-channel				
Input	3-pin XLR Male				
Output	3-pin XLR Female				
Other Operating Modes	Standalone, Master/Slave				
Coolness Factor					
Muy Fresco					
Warranty	2-year limited warranty, does not cover malfunction caused by damage to LED's.				

This page intentionally left blank.

Motif.

we sincerely appreciate
you choosing our products.
so, from all of us,

thank you.

everything in this manual is copyright 2016 blizzard lighting, llc.
"motif," "fresco," and "blizzard," are TM and/or (R) blizzard lighting, llc
trees are beautiful and finite.
please recycle this manual if you aren't going to bother reading it :)