



2-Way Coaxial Horn Speaker 60W

CS-761 Series



Bringing you high sound quality for both speech and music applications in outdoor environments

CS-761 is a 2-way coaxial speaker system designed for high efficiency, high power input handling capacity, and is a highly intelligible speaker suited for public address announcements and BGM application in an outdoor environment.



Suited to voice announcement and music distribution applications.

Attention please.



CS-761B
Black



CS-761W
White

Key Benefits & Features

Excellent Speech and BGM Clarity

2-way coaxial speaker construction with 16 cm cone speaker and 2.5 cm tweeter enabling highly intelligible broadcasts that can be used for music.

High-powered 60 W rated input enabling high-quality broadcast in a wide area.

Wide frequency response 100 Hz - 20 kHz allowing various audio applications.

Greatest all rounder for Outdoor applications

IP66 rating: Ideal for outdoor applications within the rated operating temperature specifications.

Special paint coat prevents color degradation, ensuring long-lasting exterior condition.

Various mounting brackets available as accessories allowing flexibility of mounting the speaker on the wall, ceiling, column or pole.

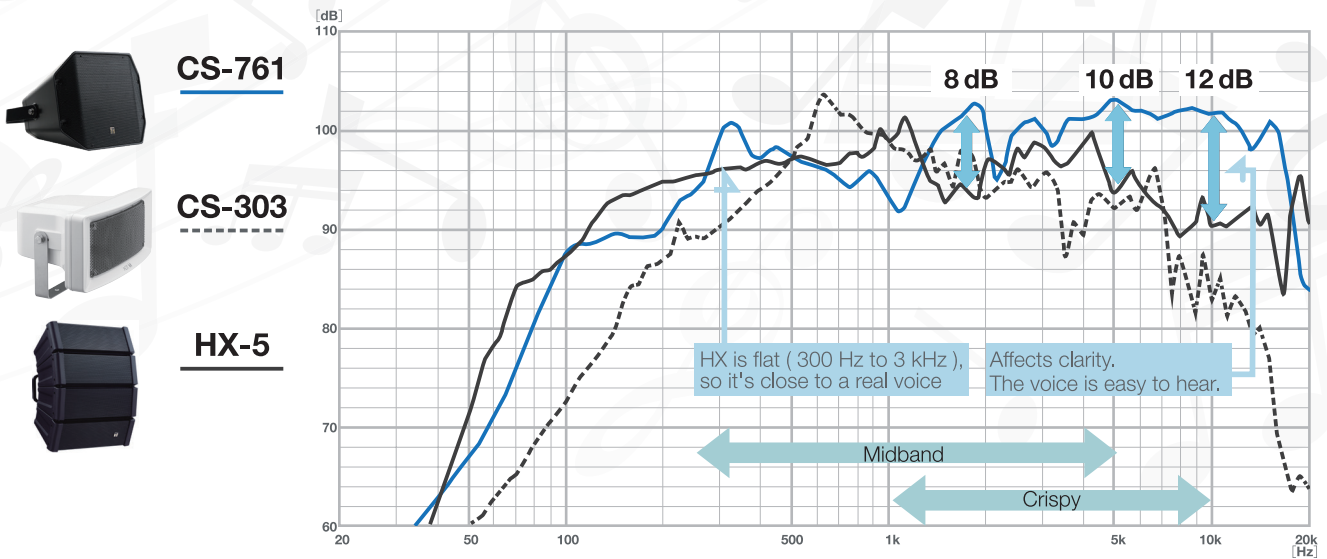
Rotary switch enabling simple impedance change from 170 Ω up to 1.3 k Ω for 100 V line, and 83 Ω up to 670 Ω for 70 V line applications.

Sophisticated design

An elegant enclosure formed of straight lines suitable for any installation requirements, available in black and white finishes, complementing a venue's interior color scheme.

Frequency Characteristic Comparison

The bass range is cut naturally, and the sound pressure level is high up in the treble range, making it possible to broadcast more clearly, even in outdoors environments when compared to other speakers.



- » Definition of sound quality: Frequency balance (low range, precautions)
- » Definition of sound quality: Frequency balance (300 Hz to 3 kHz is 1 octave in the middle band)
- » Reducing the dropout: Easy to hear
- » Loudness: Raises high and low frequencies.
- » Voice Reduce: Reduces the midband.

Comparison image

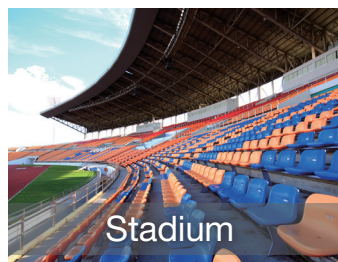
CS-761



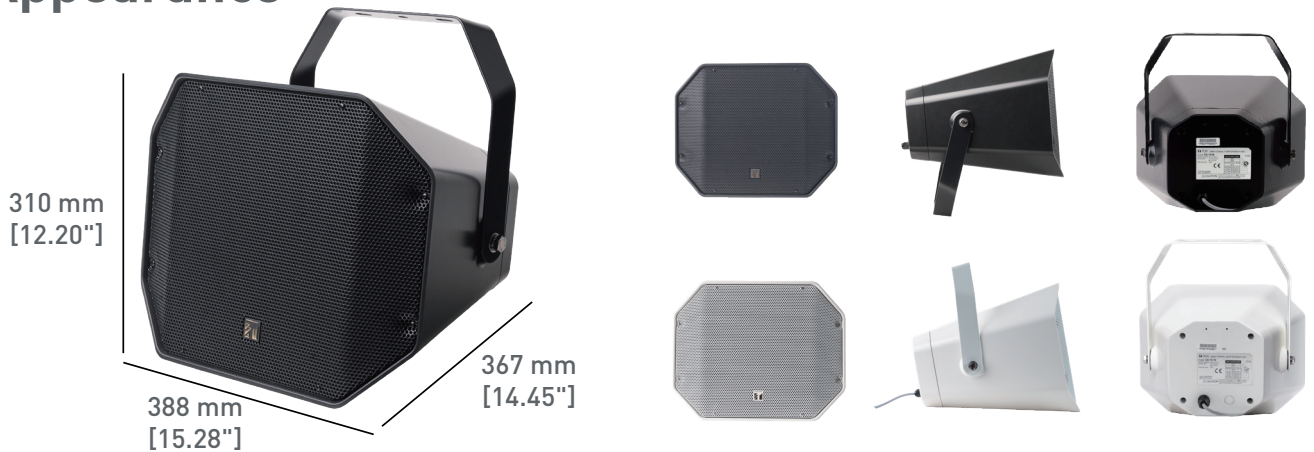
Conventional Horn Speaker



Applications Examples



Appearance



EN certified model: CS-761BS



The CS-761BS-B/W are the models certified for voice alarm systems for fire detection and fire alarm system.



The CS-761BS-B/W are the models in compliance with the British Standard BS 5839-8:2008



Fireproof speaker cable can be wired through the rear of the case.

Specifications

	CS-761B	CS-761BS-B (*1)	CS-761W	CS-761BS-W (*1)
Rated Input	60 W			
Rated Impedance	100 V line: 170 Ω (60 W), 330 Ω (30 W), 670 Ω (15W), 1.3 kΩ (7.5 W) 70 V line: 83 Ω (60 W), 170 Ω (30 W), 330 Ω (15W), 670 Ω (7.5 W)			
Sensitivity	100 dB (1 W, 1 m) (1 kHz - 10 kHz, pink noise)			
Frequency Response	100 Hz - 20 kHz			
Speaker Component	Low frequency: 16 cm (6") cone-type, High frequency: 2.5 cm (1") tweeter			
Directivity Angle	Horizontal: 90°, Vertical: 80°			
Operating Temperature	-10°C to +50°C (14°F to 122°F)			
Dust/Water Protection	IP66			
Connection	Speaker cable (Hot: Black, Com: White)			
Finish	Enclosure: ABS resin, black (RAL 9011 equivalent), paint Punched net: Steel plate, black (RAL 9011 equivalent), paint Bracket: Stainless steel, black (RAL 9011 equivalent), powder coating		Enclosure: ABS resin, white (RAL 9010 equivalent), paint Punched net: Steel plate, white (RAL 9010 equivalent), paint Bracket: Stainless steel, white (RAL 9010 equivalent), powder coating	
Dimensions	388 (W) X 310 (H) x 367 (D) mm (15.28" x 12.2" x 14.45")			
Weight	7.6 kg (16.75 lb)			
Option	Speaker mount bracket: SP-201 Pole band: YS-60B Speaker stand: ST-34B			
Sensitivity (*1)	100 dB (1 W, 1 m) (1 kHz -10 kHz, pink noise), 99 dB (1 W, 1 m) (100 Hz - 10 kHz, pink noise), 87 dB (1 W, 4 m) (100 Hz -10 kHz, pink noise)			
Maximum	117 dB (60 W, 1 m) (1 kHz - 10 kHz, pink noise)			
Sound Pressure Level (*1)	103 dB (60 W, 4 m) (100 Hz - 10 kHz, pink noise)			
Coverage Angle (-6 dB) (*1)	Declared value according to EN 54-24 Horizontal: 135° (500 Hz), 70° (1 kHz), 70° (2 kHz), 90° (4 kHz) Vertical : 160° (500 Hz), 85° (1 kHz), 110° (2 kHz), 105° (4 kHz)			
Environmental Type (*1)	Type B (outdoor applications)			
Applicable Cable (*1)	Size: PG9 One cable gland is factory-installed. For bridge connection, one cable gland can be added.			
Applicable CableSize (*1)	Outer diameter: Φ4.5 - 8.2 mm Conductor: Solid wire or 7-core wire No bridge connection: 0.8 - 10 mm ² (AWG 18 - 7) for solid wire, 0.8 - 8 mm ² (AWG 18 - 8) for 7-core wire Bridge connection: 0.8 - 2.5 mm ² (AWG 18 - 13) for solid wire, 0.8 - 1.5 mm ² (AWG 18 - 15) for 7-core wire			
Cable Connection (*1)	Screw terminal (steatite), can be bridge-connected			

(*1) Specifications are clarified for EN 54-24 requirement.

Note: In the case of an indoor swimming pool application, it is advisable that the site is well ventilated, otherwise the bracket may deteriorate due to corrosion, eventually causing the speaker to fall which may result in personal injury.