

# geminini®



**WPX-2000**  
1200W  
Modular Line  
Array System

**WPX-2000TOGO**  
1000W  
Battery Powered  
Line Array System

## INDEX

What's Included	2
Precautions	3
introduction	4
Features	5
Product Overview	6
LED Indicators	8
Bluetooth & USB	10
Specifications	13
FCC Compliance Statement	14
Legality & Safety	15
Warranty info	16
Manual en Español	17
Manuel en Français	26
Handbuch in Deutsch	35
Manuale in Italiano	44
Handleiding in het Nederlands	53

## What's Included

- 1 x Array Speaker Column
- 2 x Array Spacers
- 1 x Subwoofer Base Station
- 1 x IEC Power Cable
- 1 x Wired Microphone
- 1 x User Manual

©2023 Innovative Concepts & Design LLC. All Right Reserved.  
Bluetooth® is a registered trademark of Bluetooth SIG Inc.  
Product Specifications and colors may vary from photo.

Manufactured and serviced by:  
Innovative Concepts & Design LLC  
458 Florida Grove Road  
Perth Amboy, NJ 08861 USA  
(732)587-5466

[geminisound.com](http://geminisound.com)

## PRECAUTIONS PLEASE READ THESE INSTRUCTIONS GIVEN IN THIS MANUAL AND THOSE MARKED ON THE UNIT

This set has been designed and manufactured to assure personal safety. Improper use can result in electric shock or fire hazard. The safeguards incorporated in this unit will protect you if you observe the following procedures for installation, use and servicing. This unit is fully transistorized and does not contain any parts that can be repaired by the user.

## WARNINGS

### Fire and electric shock hazard

- 1 - Do not place any open flame sources, such as lighted candles, on or near the apparatus.
- 2 - Do not attempt to service the apparatus yourself.
- 3 - Opening or removing covers may expose you to dangerous voltages or other hazards and will void the manufacturer's warranty.
- 4 - To prevent risk of fire or electric shock, avoid overloading wall outlets, extension cords, or integral convenience receptacles.
- 5 - Lightning storms Unplug this apparatus during lightning storms.
- 6 - Object and liquid entry: Never insert objects of any kind through the openings of this apparatus, as it may touch dangerous voltage points or short-circuit parts that could result in a fire or electric shock. Care should be taken so that objects do not fall and liquids are not spilled into the apparatus through openings in the enclosure

### Battery charging

- 1 - To reduce the risk of fire or electric shock, do not expose the apparatus to rain or moisture while charging.
- 2 - The apparatus should not be exposed to dripping or splashing; and objects filled with liquids, such as vases, should not be placed on or near it while being charged.
- 3 - Do not continue charging the battery if it does not reach full charge within the specified charging time. Overcharging may cause the battery to become hot, rupture, or ignite.
- 4 - Do not attempt to charge the battery in temperatures outside the range of 32°-104°F(0°-40°C).
- 5 - If you see any heat deformation or leakage, properly dispose of the battery.
- 6 - If the battery begins to leak, do not allow the liquid to come into contact with your skin or eyes. If contact has been made, wash the affected area with plenty of water and seek medical attention immediately.

## INTRODUCTION

Introducing the Gemini WPX Series, featuring two cutting-edge modular line array speaker systems: the WPX-2000 and the WPX-2000TOGO. These powered PA arrays redefine portability and performance for audio professionals on the move. Both speakers stand tall with an adjustable height of up to 73 inches

The WPX-2000 delivers an immersive audio experience through six 2.75" neodymium high-frequency drivers and a compact 8" subwoofer that packs a punch with its 1200 watts of peak power. Its Class D digital amplifier ensures exceptional sound quality, while the rear panel offers a versatile range of audio I/O options, including a 3-channel mixer, USB and Bluetooth audio streaming, and TWS linking for wireless pairing of two WPX series speakers. With easy transport in mind, the WPX-2000 weighs in at just 32 lbs and features convenient carry handles on the sub unit.

On the other hand, the WPX-2000TOGO takes the WPX Series to even more remote locales with its battery-powered convenience. Equipped with an 11.1V Lithium Battery (97.68 watt-hours), this portable powerhouse charges in 4-5 hours, providing 4-8 hours of party time (volume-dependent). Like its counterpart, it boasts an adjustable height of 73 inches and the same audio excellence with six 2.75" neodymium high-frequency drivers and an 8" subwoofer at 1000 watts peak power. The rear panel mirrors the WPX-2000, featuring a 3-channel mixer, USB and Bluetooth audio streaming, and TWS linking for wireless speaker pairing. Weighing just 33 lbs and equipped with carry handles, the WPX-2000TOGO ensures that your show goes wherever you go. Whether you're a mobile DJ, an on-the-go entertainer, or the life of the party, the Gemini WPX Series is your go-to solution for professional audio needs. Turn up the fun and amplify your experience with the WPX Series from Gemini!

## FEATURES

### Unrivaled Sound Experience

Immerse yourself in a world of powerful sound with the WPX Series. Whether it's the WPX-2000's astonishing 6000 watts of continuous RMS Class D digital amplification or the WPX-2000TOGO's 1000W Peak Power driving an 8" subwoofer and six high-frequency drivers, both speakers deliver an unrivaled audio experience that captivates any audience.

### Tailor-Made Sound Bliss

Customize your audio adventure like a pro. Both the WPX-2000 and WPX-2000TOGO allow you to shape your sound with onboard EQ controls. Tweak, tune, and twist the settings to match your vibe, creating the music magic you desire for any event.

### Endless Soundscapes

Dive into an expansive audio universe with the WPX Series. Whether it's the WPX-2000's two versatile input channels for line/mic and adjustable reverb or the WPX-2000TOGO's 3-channel mixer with connections for Microphone, Guitar, or any Line level instrument, along with USB and Bluetooth options with TWS linking, the possibilities for your soundscapes are truly endless.

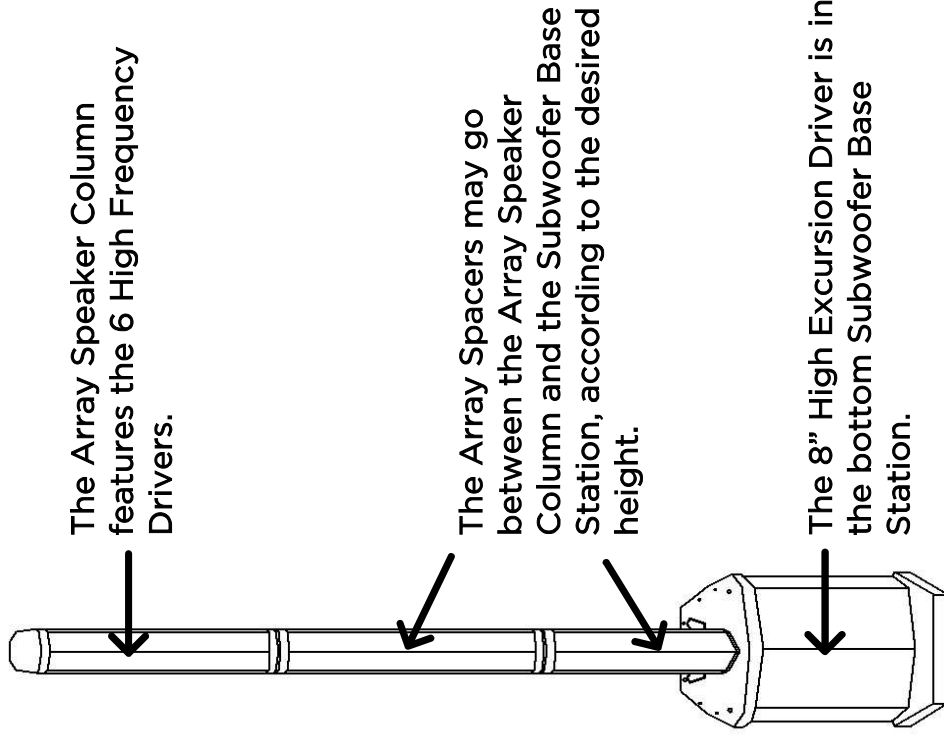
### Master of Sound Control

Take charge of your audio kingdom with absolute control. Both the WPX-2000 and WPX-2000TOGO put the power at your fingertips, allowing you to command volume, effects, and any other audio sorcery to ensure your sound is just right.

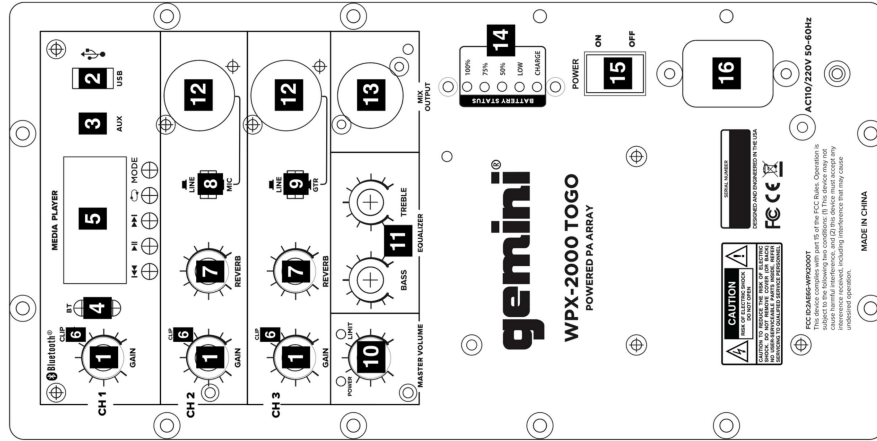
### The Ultimate Mobile Party

Elevate every event into an unforgettable experience with the WPX Series. Whether you're a mobile DJ, entertainer on the go, or the life of the party, these top-tier modular line array speaker systems are your ideal partners for Karaoke nights, busking adventures, weddings, outdoor gatherings, and beyond. With impressive battery life in the WPX-2000TOGO and easy transport features in both, the WPX Series is the ultimate choice for those looking to take the party on the road.

## PRODUCT OVERVIEW



## PRODUCT OVERVIEW



1. **GAIN KNOBS**  
Adjust Channel volume
2. **USB PORT**  
Insert USB stick for audio playback
3. **AUX IN**  
Connect to device via 1/8" cable
4. **BLUETOOTH & TWS BUTTONS**  
Wireless connections
5. **MEDIA PLAYER**  
Audio Playback control
6. **CLIP LED**  
Lights to show signal overload
7. **REVERB**  
Add Reverb effect to Ch 2/3
8. **LINE/MIC SWITCH**  
Select line or mic level signal
9. **LINE/GTR SWITCH**  
Select line or guitar level signal
10. **MASTER VOLUME**  
with power and limiter LED indicators
11. **EQUALIZATION**  
Master Bass & Treble +/- 8 dB
12. **XLR/1/4" COMBO JACKS**  
Connect XLR or 1/4" cable
13. **XLR MIX OUTPUT**  
Connect to additional speaker or recording device
14. **BATTERY LIFE INDICATOR**  
\*WPX-2000TOGO only
15. **POWER SWITCH**  
Turn speaker on/off
16. **POWER PORT**  
Connect IEC power cable

## LED INDICATORS

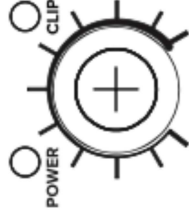
### CLIP (Yellow Light):

The yellow 'CLIP' lights located on input channels 1, 2, and 3, represent clipping due to excessive gain. When any of these yellow lights are illuminated, it signals that the incoming signal on the respective channel is too strong. Adjust the input levels for channels 1, 2, or 3 accordingly to prevent distortion and maintain clear audio quality.



### POWER (Green Light):

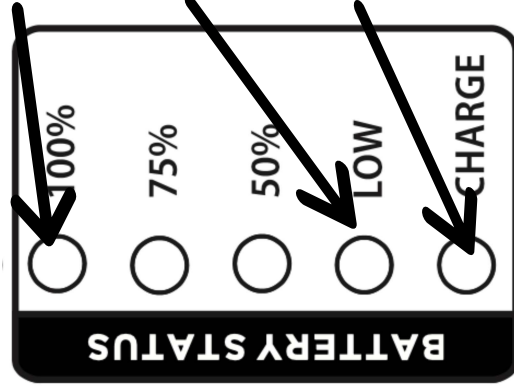
The 'POWER' indicator is the green light located in the master section of the mixer. When the speaker is turned on, this light emits a green glow, confirming that the speaker is powered up and ready for operation.



### LIMIT (Red Light):

The red 'LIMIT' light is also located in the master section of the mixer. If this light is illuminated, it indicates that the master volume is too high, triggering the speaker's limiter. This excessive signal can impact the overall dynamic range and auditory experience. To rectify this, adjust the master volume appropriately by turning it down until the red light is no longer illuminated. This ensures optimal audio quality and prevents potential distortion.

## BATTERY LIFE INDICATOR (WPX-2000TOGO ONLY)



The green light serves as the indicator for sufficient battery power. When illuminated, it confirms that the battery has ample charge for operation.

The LOW red light indicates that the battery is nearing depletion. It is essential to check for sufficient battery power to ensure uninterrupted playback.

The CHARGE light has dual colors to convey the charging status:

*Red Light:* When plugged into an external power source, the red light indicates that the battery is not yet fully charged.

*Green Light:* Charging is complete.

### WPX2000TOGO Battery Notice:

For optimal performance and to prevent potential damage, it is recommended to charge the device at least once every 70 days when not in use. This ensures that the 11.1V Li Battery remains adequately charged and protected from low charge levels.

### Battery Replacement:

When replacing the battery, simply remove the screws located at the bottom of the speaker. Replace the old battery with a new one of the same specifications for seamless functionality.

## BLUETOOTH AND USB FUNCTION

### Button Functions:

- **Previous/Rewind:**
  - Short press during USB/BT use to play the previous song.
  - Long press to rewind the currently playing music.
- **Next/Fast Forward:**
  - Short press during USB/BT use to play the next song.
  - Long press to fast forward the currently playing music.
- **Pause/Play:**
  - During USB/BT play, a single press pauses and displays. Press again to resume playback.
- **Mode Switch:**
  - Short press cycles through USB/AUX/BT modes.
  - In the absence of USB/SD input, the order is BT/AUX.
- **Looping Button (USB Mode Only):**
  - "ONE" – Single loop, continuously looping the current music.
  - "ALL" – All songs loop, playing each song after the first and last have been played.
- **Bluetooth Button:**
  - Indicates playing the first 1, 2, 3, 4, and 5 song tracks.
- **Bluetooth Button:**
  - During USB or AUX use, long press to directly switch to BT mode in search mode. "BLUE" flashes, and when Bluetooth is connected, "BLUE" stops flashing.
  - If Bluetooth is already connected, long press to cancel the current connection. Reconnecting requires manual Bluetooth connection.

### Bluetooth Mode Activation:

Upon turning on, the default mode is Bluetooth. The LED screen displays a small "BT" icon, and the screen flashes "BLUE" as the device searches for connections. Once connected, "BLUE" stops flashing, and the Bluetooth connection name appears as: GEMINI WPX SERIES.

### TWS Functionality:

Pressing the TWS button enables two identical speakers to share data, allowing the secondary speaker and the host speaker to play in sync.

#### TWS Connection:

- When two WPX devices are switched to BT mode together, extended press the "TWS" button. The display flashes with "PAIR."
- The other speaker display flashes with "BLUE," and once connected, the master device's display shows from "PAIR" to "BLUE."
- The display of the receiving secondary speaker shows from "BLUE" to "PAIR."
- After TWS is connected, Bluetooth can only be connected to the master device's speaker.
- After the TWS connection is completed, extended press the master device's "TWS" button to cancel the TWS connection.
- Press the secondary speaker's "TWS" to cancel the TWS connection. The secondary speaker flashes, and the display flashes with "BLUE" and is in retrieval mode.
- To reconnect, extended press the master device's TWS button for 3 seconds, wait for 7 seconds, and then connect again.

#### TWS Mode Playback Control:

- In TWS mode, the fast forward, fast reverse, and pause button of the secondary speaker can also control the playback of the phone.

### USB Playback:

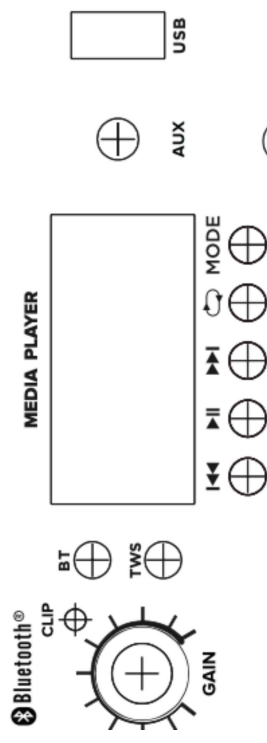
Inserting a USB activates MP3 playback automatically. The screen displays a small USB icon, indicating USB playback mode. Supported formats include MP3, WAV, MP2, and WMA.

### AUX Mode Activation:

When an AUX signal is inputted, pressing the MODE key switches to AUX mode, and the screen displays the AUX icon.

### Factory Reset:

An extended press of the MODE & PREVIOUS/REWIND button for more than 6 seconds initiates a factory reset, useful when button programming is scrambled or confusion arises in memory during prolonged playback.



## SPECIFICATIONS

PRODUCT	WPX-2000
Active/Passive	Active
Amplifier Type	Class D
LF Driver Size	8" Subwoofer
HF Drivers Size	6 x 2.75" neodymium drivers
Total Power	1200 Watts Peak (600W RMS)
Inputs	2 x dual 1/4" / XLR Switchable Line/MIC Inputs
Outputs	XLR Mix Output
Media Player	Bluetooth & USB
Bluetooth	Bluetooth® Streaming with TWS Link
Lighting	N/A
Frequency Response	20Hz-20KHz
Max Peak SPL @ 1 Meter	116 dB
Signal Processing	Reverb Effect and Master EQ (Bass & Treble)

PRODUCT	WPX-2000TOGO
Active/Passive	Active
Amplifier Type	Class D
LF Driver Size	8" Subwoofer
HF Drivers Size	6 x 2.75" neodymium drivers
Total Power	1000 Watts Peak (500W RMS)
Inputs	2 x dual 1/4" / XLR Switchable Line/MIC Inputs
Outputs	XLR Mix Output
Media Player	Bluetooth & USB
Bluetooth	Bluetooth® Streaming with TWS Link
Lighting	N/A
Frequency Response	20Hz-20KHz
Max Peak SPL @ 1 Meter	111 dB
Signal Processing	Reverb Effect and Master EQ (Bass & Treble)

**Responsible Party Name:**  
Innovative Concepts & Designs LLC

**Company address:**  
458 Florida Grove Road  
Perth Amboy, NJ, 08861 USA

### FCC Compliance Statement

This device complies with Part 15 of the FCC Rules. The operation is subject to the following two conditions:

- (1) This device may not cause harmful interference, and
- (2) This device must accept any interference received, including interference that may cause undesired operation.

Note: This equipment has been tested and found to comply with the limits for a class B digital device, pursuant to Part 15 of the FCC Rules. These equipment generates uses and can radiate radio frequency energy and if not installed and used in accordance with the instructions, may cause harmful interference to radio communications. However, there is no guarantee that interference will not occur in a particular installation. If this equipment does cause interference to radio or television reception, which can be determined by turning the equipment off and then on, the user is encouraged to try to correct the interference by one or more of the following measures:

- Reorient or relocate the receiving antenna.
- Increase the separation between the equipment and receiver.
- Connect the equipment to a different outlet so that the equipment and receiver are on different branch circuits.
- Consult the dealer or an experienced radio/TV technician for help.

Any Changes or modifications not expressly approved by the party responsible for compliance could void the user's authority to operate the equipment. For Mountable Outdoor Bluetooth Speakers this equipment complies with FCC radiation exposure limits set forth for an uncontrolled environment. This equipment should be installed and operated with minimum distance 20cm between the radiator & your body.

FCC IDs:  
WPX-2000: 2AE6G-WPX2000  
WPX-2000TOGO: 2AE6G-WPX2000T

## LEGALITY & SAFETY

The device is not intended for use by people (including children) with reduced physical, sensory or mental capacity. People who have not read the manual, unless they have received an explanation by someone responsible for their safety, should not use this unit. Children should be monitored to ensure that they do not play with the device. The device should always be readily accessible. The device should not be exposed to water. No objects filled with liquids, such as vases, shall be placed on the device. Always leave a minimum distance of 10 cm around the unit to ensure sufficient ventilation. Open flame sources, such as candles, should not be placed on top of the device. The device is intended for use only in a temperate climate. At full volume, prolonged listening may damage your hearing and cause temporary or permanent deafness, hearing drone, tinnitus, or hyperacusis. Listening at high volume is not recommended. One hour per day is not recommended either. Danger of explosion if battery is incorrectly replaced or not replaced by the same type or equivalent. The battery should not be exposed to excessive heat such as sunshine or fire. Different types of batteries, or new and used batteries, should not be mixed. The battery must be installed according to its polarity. If the battery is worn, it must be removed from the product. The battery must be disposed of safely. Always use collection bins to protect the environment. The battery can only be replaced by the maker of this product, the sales department, or a qualified person. Switch the device off where the use of the device is not allowed or where there is a risk of causing interference or danger - for examples: on an aircraft, or near medical equipment, fuel, chemicals or blasting sites. Check the current laws and regulations regarding the use of this device in the areas where you drive. Do not handle the device when driving. Concentrate fully on driving. All wireless devices are susceptible to interference which may affect their performance. All our devices conform to international/national standards and regulations, and we aim to limit user exposure to electromagnetic fields. These standards and regulations were adopted after the completion of extensive scientific research. This research established no link between the use of the mobile headset and any adverse effects on health if the device is used in accordance with standard practices. Only qualified people are authorized to install or repair this product. Only use batteries, chargers and other accessories which are compatible with this equipment. Do not connect incompatible products. This equipment is not waterproof. Keep it dry. Keep your device in a safe place, out of the reach of young children. The device contains small parts which may present a choking hazard to kids

## WARRANTY

- A. Innovative Concepts & Designs LLC guarantees its products to be free from defects in materials and workmanship for one (1) year from the original purchase date. Exceptions: Laser assemblies on CD Players, batteries, cartridges, and crossfaders are covered for 90 days.
- B. This limited warranty does not cover damage or failure caused by abuse, misuse, abnormal use, faulty installation, improper maintenance or any repairs other than those provided by an authorized Innovative Concepts & Designs LLC Service Center.
- C. There are no obligations of liability on the part of Innovative Concepts & Designs LLC for consequential damages arising out of or in connection with the use or performance of the product or other indirect damages with respect to loss of property, revenues, of profit, or costs of removal, installation, or reinstallation. All implied warranties for Innovative Concepts & Designs LLC, including implied warranties for fitness, are limited in duration to one (1) year from the original date of purchase, unless otherwise mandated by local statutes.

# geminini®

[support.geminisound.com](http://support.geminisound.com)