

AT8647QM/S

accessories

Microphone Shock-mount Plate with Switch



Features

- Intended for use with microphones mounted on lecterns, pulpits, conference tables and other surfaces
- XLRF-type connector works with plug-in gooseneck microphones with XLRM-type outputs
- Suspended panel isolates microphone from the mounting surface
- Built-in electronic mute circuit for phantom powered microphones
- Rugged mechanical switch provides push-on/push-off operation
- LED indicates microphone is on
- Operates on 24V to 48V DC phantom power
- Terminal screw output connections
- Low-profile design with low-reflectance black finish for minimum visibility

Description

Featuring a phantom-powered mute switch with a lighted “on” indicator, the AT8647QM/S shock-mount plate effectively isolates mounted microphones from impact vibration and mechanical noise normally transmitted from the surface. It is intended for use with microphones mounted on lecterns, pulpits, conference tables and similar surfaces. Designed especially for UniPoint® and Engineered Sound® gooseneck microphones, it may be used with other lightweight plug-in microphones with XLRM-type outputs.

The AT8647QM/S incorporates a sturdy yet flexible suspension panel that provides mechanical isolation.

Installation

Following the dimensions in Figure 1, drill a 2" clearance hole and four small pilot holes for screws in the mounting surface. A smooth, horizontal (not tilted) surface is preferred for best performance.

Mounting & Connections

Connect a flexible two-wire shielded cable, such as AT8300, to the screw-terminals on the bottom of the AT8646QM/S, after bringing the cable-end up through the 2" mounting hole. *Note that the terminal order is 1-3-2.* The terminal numbers are on the circuit board and on the terminal strip. Connect the shield to Terminal 1, balanced signal/phantom power to Terminals 2 and 3. Connect the “positive” signal lead to Terminal 2, in accordance with industry convention. Make certain that the screw-terminals are on the bare wire strands, not the insulation, and that there are no bare wires or loose strands that could touch each other.

Once the wiring is complete, carefully position the shock mount on the mounting surface and attach it with the included screws, or with #6 hardware. Secure the mic cable to the bottom of the mounting surface near the shock mount, using a cable clamp or similar device. Leave a small “loop” of cable hanging freely below the shock mount. If the cable

is pulled snug, it will “bypass” the suspension and reduce its effectiveness. Securing the cable also helps protect the screw-terminal connections.

Mute Switch

The AT8647QM/S features a press-on/press-off switch that controls the microphone, muting it by 50 dB at 1,000 Hz. The circuitry also operates a light in the switch, powered by the 24–48V phantom source, to indicate when the mic is “on.” Regardless of the switch position, the actual mic operating voltage will be approximately 10-12V less than the phantom source voltage.

Architect’s and Engineer’s Specifications

The shock mount plate shall be designed to work with any dynamic gooseneck or phantom powered condenser gooseneck microphone with an integral 3-pin XLRM-type output connector. The plate shall have a large shock isolator designed to minimize the pickup of mechanical noise from the mounting surface and shall incorporate a rugged mechanical switch controlling a phantom-powered electronic mute circuit. The switch shall provide positive mechanical action and position indication to show on or off operation. An LED indicator shall be located in the switch and shall illuminate when the microphone is on. It shall operate from an external 24V to 48V DC phantom power source. The associated microphone shall plug into the mounting plate via a 3-pin XLRF-type input connector and a 3-pin terminal strip shall be provided on the bottom of the plate for audio output. The unit shall offer a low-reflectance black finish. The unit’s dimensions shall be: 80.5 mm (3.17") wide, 104 mm (4.10") deep, 15.5 mm (0.61") high. Weight of the shock mount less microphone, shall be 99 g (3.5 oz).

The Audio-Technica AT8647QM/S is specified.

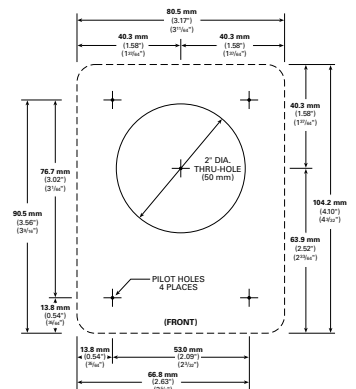
Specifications

| | |
|----------------------------|---|
| Mute function | Silent mute circuit designed to work with condenser (powered) microphones |
| Switch | Mechanical push-on/push-off |
| Input connector | 3-pin XLRF-type connector |
| Output connectors | Terminal Screws |
| Off (mute) attenuation* | 50 dB at 1000 Hz, 35 dB at 100 Hz, 30 dB at 50 Hz |
| Phantom power requirements | 24-48V DC, 3 mA typical |
| Output impedance | 360 ohms |
| Dimensions | 80.5 mm (3.17") wide, 104.0 mm (4.10") deep, 15.5 mm (0.61") high |
| Weight | 99 g (3.5 oz) |

In the interest of standards development, A.T.U.S. offers full details on its test methods to other industry professionals on request.

* 150 ohm source, 100k ohm load

Specifications are subject to change without notice.



Audio-Technica U.S., Inc., 1221 Commerce Drive, Stow, Ohio 44224
Audio-Technica Limited, Old Lane, Leeds LS11 8AG England
©2010 Audio-Technica U.S., Inc. audio-technica.com

0001-0249-00