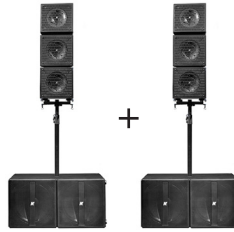


KRX802

A true line array with six mid-high 12" coaxial speaker elements



DESCRIPTION

By combining the KX12 with active K-array subwoofers, three portable systems are created, which differ in size of the subwoofers and number of KX12 units used.

With powered subwoofers that maintain the same digital editing features of all K-array active subwoofers, the KRX systems feature an integrated touch screen, providing intuitive control over the main DSP functions, such as input/output levels, signal routing, offset delays for subwoofer and mid-high speaker output (up to 12 ms each) and overall system delays (up to 330 ms). All DSP functions, including EQ, can also be controlled remotely via software through USB or RS485 (3 pin XLR). With the K-dante accessory, the systems can be used in a Dante network.

The largest of the three stereo systems is the KRX802. With three KX12 speakers combined with a KMT218 subwoofer, the system converts into a line array that delivers maximum SPL, very low frequency and best bass response. No longer a point source, the KRX802 covers larger distances with higher pressure in larger venues by means of an extendable pole and proper joining and stacking hardware per side.

Possible applications are DJ use, clubs and anywhere a lot of pressure is needed close to the speakers.

FEATURES

- Unique performance-to-size ratio
- Asymmetrical horizontal and vertical coverage
- Stainless steel chassis
- Electronically protected

APPLICATIONS

- Clubs, DJ sets and lounges
- Portable and installed AV systems
- Portable live sound
- Sport facilities

ACCESSORIES

K-DANTE, K-USB, K-FLY22, K-JOINT2B, K-FLY2B, K-WALL2, K-KCLAMP/S, K-KCLAMP, K-AMPCOVER, K-SPK235, K-WIRE2, K-WIRE15

COLORS AVAILABLE

BLACK



SPECIFIC RAL CODE FOR A CUSTOMIZED PAINTED MODEL

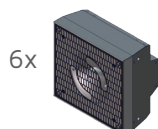


SYSTEM COMPONENTS



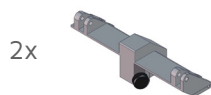
2x

KMT218



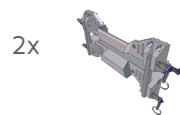
6x

KY102



2x

K-FLY22



2x

K-JOINT2B



2x

Extendable pole



DATASHEET

Portable System KRX802

TECHNICAL SPECIFICATIONS

KX12

ACOUSTICS

Power handling	800 + 200 W
Impedance	8Ω
Frequency range	120 Hz - 19 KHz ⁽¹⁾
Maximum SPL	127 dB (cont.) - 133 dB (peak) ⁽²⁾

COVERAGE

Horizontal	100°/30° (depending on horn orientation)
Vertical	100°/30° (depending on horn orientation)

POWER AUDIO INPUT/OUTPUT

Connectors	2 x 4-pin Speakon
Wiring	1+ 1- (Signal IN & LINK) 2+ 2- (Through)

TRANSDUCERS

Coaxial	1 x 12" Neodymium magnet woofer with 3" voice coil Neodymium magnet compression driver with 2" voice coil
---------	--

RECOMMENDED AMPLIFIERS

Type	KMT18, KMT21, KMT218, KA84
------	----------------------------

PHYSICAL

Dimensions	34.0 x 32.0 x 20.0 cm (13.4" x 12.6" x 7.9")
Weight	12.2 kg (26.9 lbs)

Notes for data
 1. With dedicated preset;
 2. Measured with musical signal

New materials and design are introduced into existing products without previous notice.
 Present systems may differ in some respects from those presented in this catalogue.

KMT218

ACOUSTICS

Power handling	1600 W (AES)
Impedance	4 Ω
Frequency range (-10 dB)	30 Hz - 150 Hz (1)
Maximum SPL	134 dB (cont.) - 140 dB (peak) (2)

COVERAGE

Horizontal	omni
Vertical	omni

CROSSOVER

Type	Internal DSP controlled
Frequency	Low pass @ 150 HZ (maximum - preset dependent)

TRANSDUCERS

Type	2 X 18" Neodymium magnet woofer with 3" voice coil
------	--

AMPLIFIER

Type	1 module class D - DSP controlled
Subwoofer Power Output	2500 W @ 4 Ω 1% THD + NOISE (3)
Speakon Power output	2500 W @ 4 Ω 1% THD + NOISE (3)
Protections	Over Temp.(Power Limiting - Thermal Shutdown), Short Circuit/ Overload Output Protection, Power Limiting, Clip Limiter/Perma- nent Signal Limiter, High Frequency Protection

PHYSICAL

Dimensions	95.3 cm x 48 cm x 60 cm (37.52" x 19.9" x 23.62")
Weight	49 Kg (108.03 lb)

Notes for data

1. With dedicated preset
2. Measured with musical signal
3. EIAJ Test Standard, 1KHz, 1%THD

New materials and design are introduced into existing products without previous notice.
 Present systems may differ in some respects from those presented in this catalogue.

