



**OPERATING INSTRUCTIONS**

**NETWORK AUDIO ADAPTER**

**NX-300**

Thank you for purchasing TOA's Network Audio Adapter.  
Please carefully follow the instructions in this manual to ensure long, trouble-free use of your equipment.

# TABLE OF CONTENTS

<b>1. NX-300 OPERATION SOFTWARE SUMMARY</b> .....	3
<b>2. STARTUP AND INITIAL SCREEN</b> .....	3
<b>3. OPERATION SCREEN DESCRIPTION</b> .....	4
3.1. Button Screen .....	4
3.2. Unit List Screen .....	5
3.3. Status Screen .....	7
<b>4. OPERATION SCREEN MENU</b> .....	8
4.1. File .....	8
4.2. Display .....	8
4.3. Tool .....	8
4.4. Help .....	8
<b>5. MAKING BROADCASTS</b> .....	9
<b>6. CHECKING UNIT STATUS</b> .....	11
6.1. Display the Detail Screen .....	11
6.2. Detail Screen .....	12
<b>7. CHECKING THE OPERATION LOG</b> .....	14
7.1. Displaying the Operation Log .....	14
7.2. Deleting the Operation Log .....	14
<b>8. CHANGING BUTTON SIZES</b> .....	15
8.1. Changing the Size of the Single Selection Button .....	15
8.2. Changing the Size of the Group Selection Button .....	16

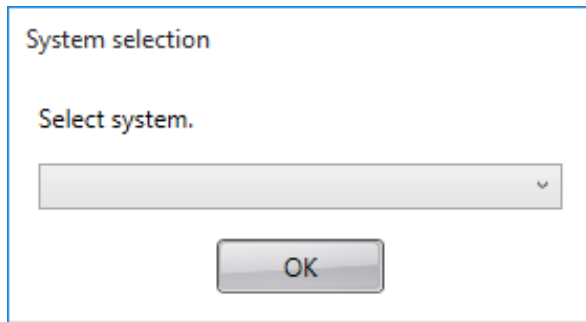
# 1. NX-300 OPERATION SOFTWARE SUMMARY

This operation software is used to set the control buttons used for broadcasts, and activate set NX-300 broadcast patterns or operate the control output.

## 2. STARTUP AND INITIAL SCREEN

**Step 1.** Double-click the NX-300 Operation Software shortcut created on the desktop or “NX-300OperationSoftware.exe” created in the installed folder.

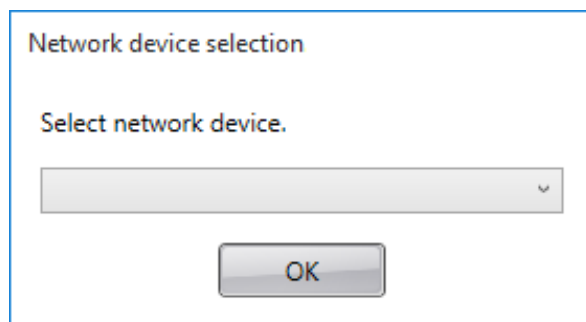
The following screen is displayed.



**Step 2.** Select the system.  
Select the system created beforehand and click the OK button.

**Tip**

If using a PC with multiple network interface cards installed, the following screen is displayed after system selection. Select the network interface card connected to the system, then click the OK button.

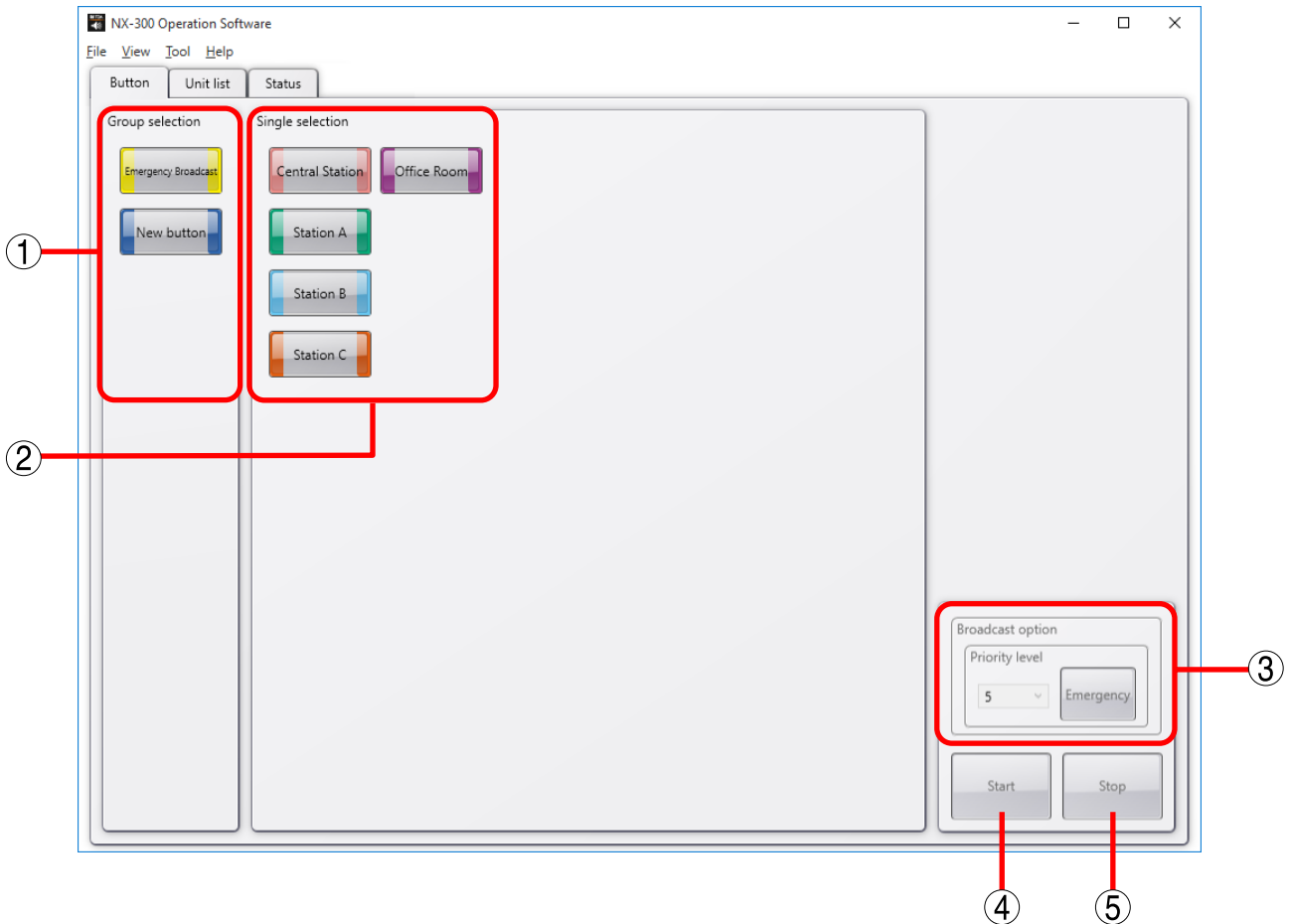


### 3. OPERATION SCREEN DESCRIPTION

This section explains the screen layout, using the accompanying operation setting screen as an example.

#### 3.1. Button Screen

Clicking the button tab displays the button screen.



#### 1. Group selection button

Used to simultaneously select two or more Single Selection buttons. The maximum number of buttons that can be registered is 100.

#### 2. Single selection button

Selects the broadcast pattern and control output to be activated. The maximum number of buttons that can be registered is 3200. One broadcast pattern or up to 500 units X 10 control output channels can be set per Selection button.

#### 3. Broadcast option

Broadcast priority can be selected.

If the Emergency button is selected, priority level 1 is assigned to the broadcast.

##### Tip

Setting the emergency broadcast setting to ON using the NX-300 Setting Software makes the output sound volume of the broadcast 6 dB louder than broadcasts with priority levels 2 – 8.

#### 4. Start button

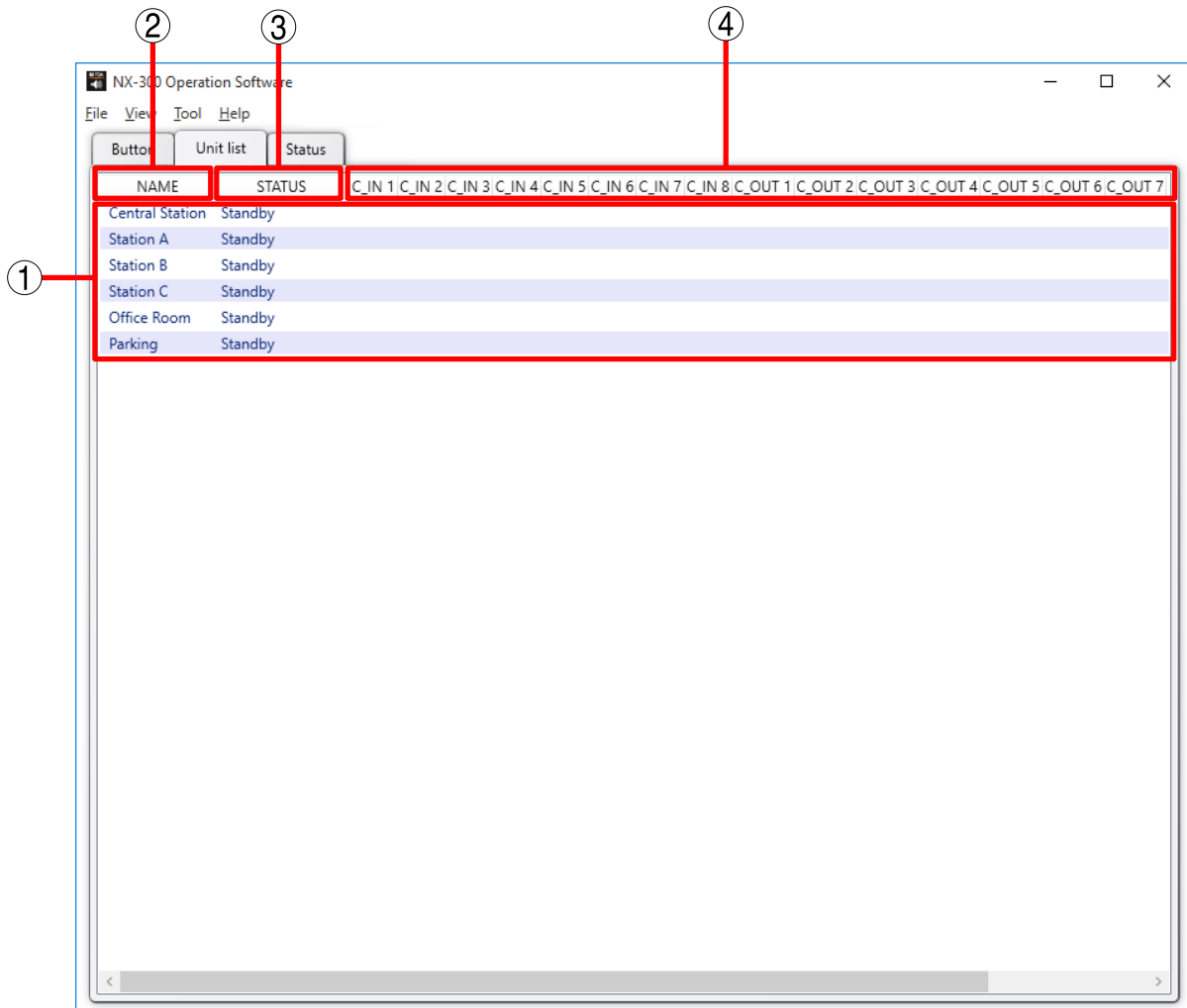
Starts up the activation contents (broadcast pattern and control output) selected with the Single or Group Selection buttons.

#### 5. Stop button

Terminates activated broadcasts or control outputs.

### 3.2. Unit List Screen

Clicking the Unit List tab displays the unit list screen.



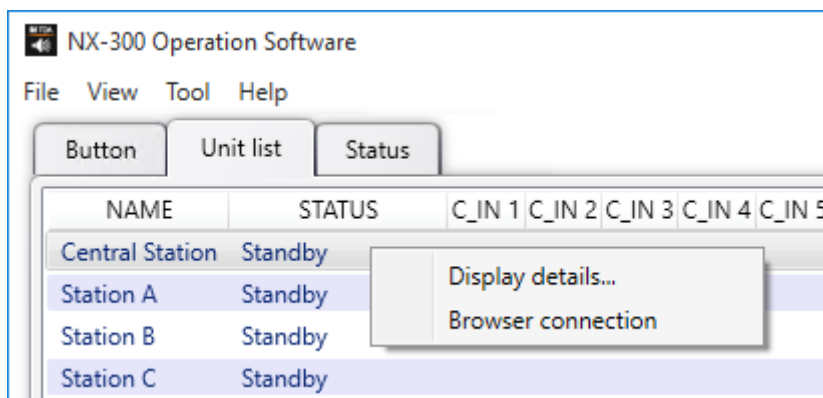
#### 1. Unit list

Displays the status of managed units.

Double-clicking a line on the list displays detailed information.

[Right-click menu]

Right-clicking the line on the list displays the following menu.



Display details: Displays detailed unit information. (See p. 11, "CHECKING UNIT STATUS.")

Browser connection: Starts up the browser and displays the device setting screen.

## **2. NAME**

Displays unit names.

## **3. STATUS**

Displays unit status.

Standby: Indicates that unit is in standby mode.

Broadcasting: Indicates that unit is being used for broadcast.

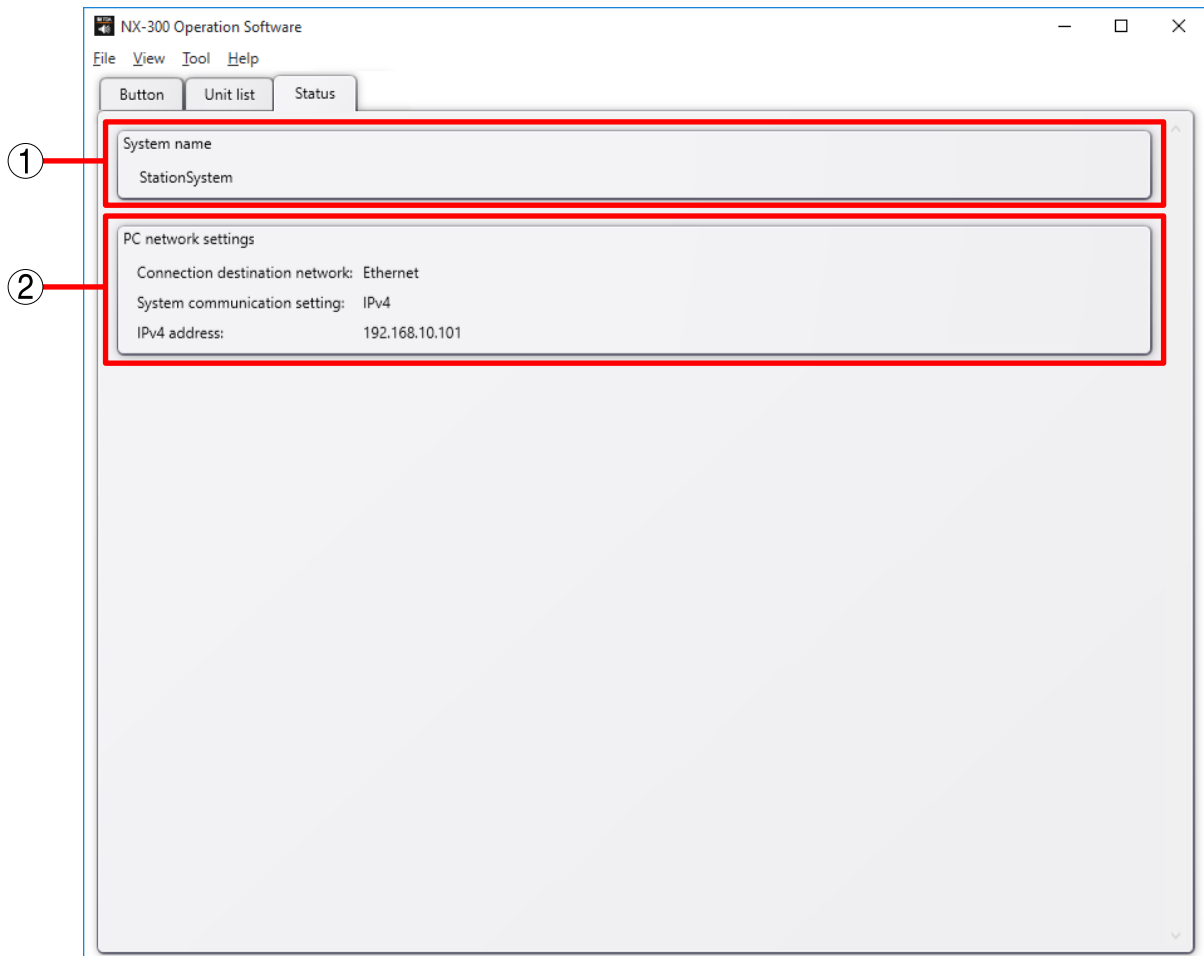
Connection failure: Indicates that unit is in a state of being incapable of communication.

## **4. C\_IN 1 – 8, C\_OUT 1 – 10**

Displays the status of control inputs and outputs.

### 3.3. Status Screen

Clicking the Status tab displays the status screen showing the NX-300 Operation Software's operating status.



#### 1. System name

Displays the system name.

#### 2. PC network settings

Displays PC network information.

Connection destination network:

Displays the network interface card in use.

System communication setting:

Indicates that the PC is operating on IPv4.

IPv4 address:

Displays the PC's IPv4 address.

## **4. OPERATION SCREEN MENU**

### **4.1. File**

Exit: Terminates the NX-300 Operation Software.

### **4.2. Display**

Single selection button size: Changes the size of the single selection button.

Group selection button size: Changes the size of the group selection button.

Operation log: Displays the operation log screen.

### **4.3. Tool**

Setting tool: Displays the setup tool screen.

Button setting: Creates or edits the single and group selection buttons.

### **4.4. Help**

About: Displays the NX-300 Operation Software's version information.



## 5. MAKING BROADCASTS

**Step 1.** Start up the NX-300 Operation Software. (See p. 3, "STARTUP AND INITIAL SCREEN.")  
The operation screen is displayed.



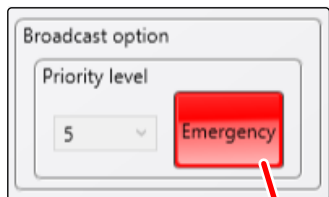
**Step 2.** Select the Button tab.  
The button screen is displayed.

**Step 3.** Select the broadcasting destination.  
To select, press group or single selection buttons.  
Multiple broadcasting destinations can be selected.

**Step 4.** Set the priority level.

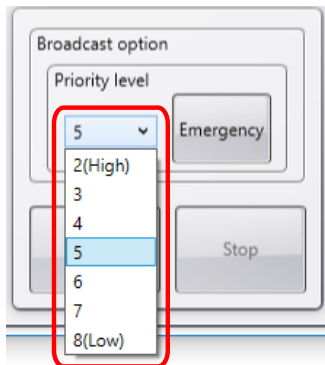
To make a broadcast with the highest priority, click the Emergency button.  
Normally, select the priority level from the pull-down menu in the priority selection box.

[High-priority broadcast]



Click

[Normal-priority broadcast (to be selected)]



Select

Broadcast priority levels can be set in 7 steps from 2 (high) to 8 (low) in the priority selection box. The lower the number, the higher the broadcasting priority. When multiple broadcasts overlap, the one with the highest priority takes precedence.

**Step 5.** Click the Start button.

When the Start button is clicked, the NX-300 Operation Software begins the broadcast in the pattern set with the selection buttons. Whether the broadcast has been started or not can be checked on the operation log screen. ([See p. 14, "CHECKING THE OPERATION LOG."](#))

**Step 6.** After the broadcast is completed, click the Stop button.

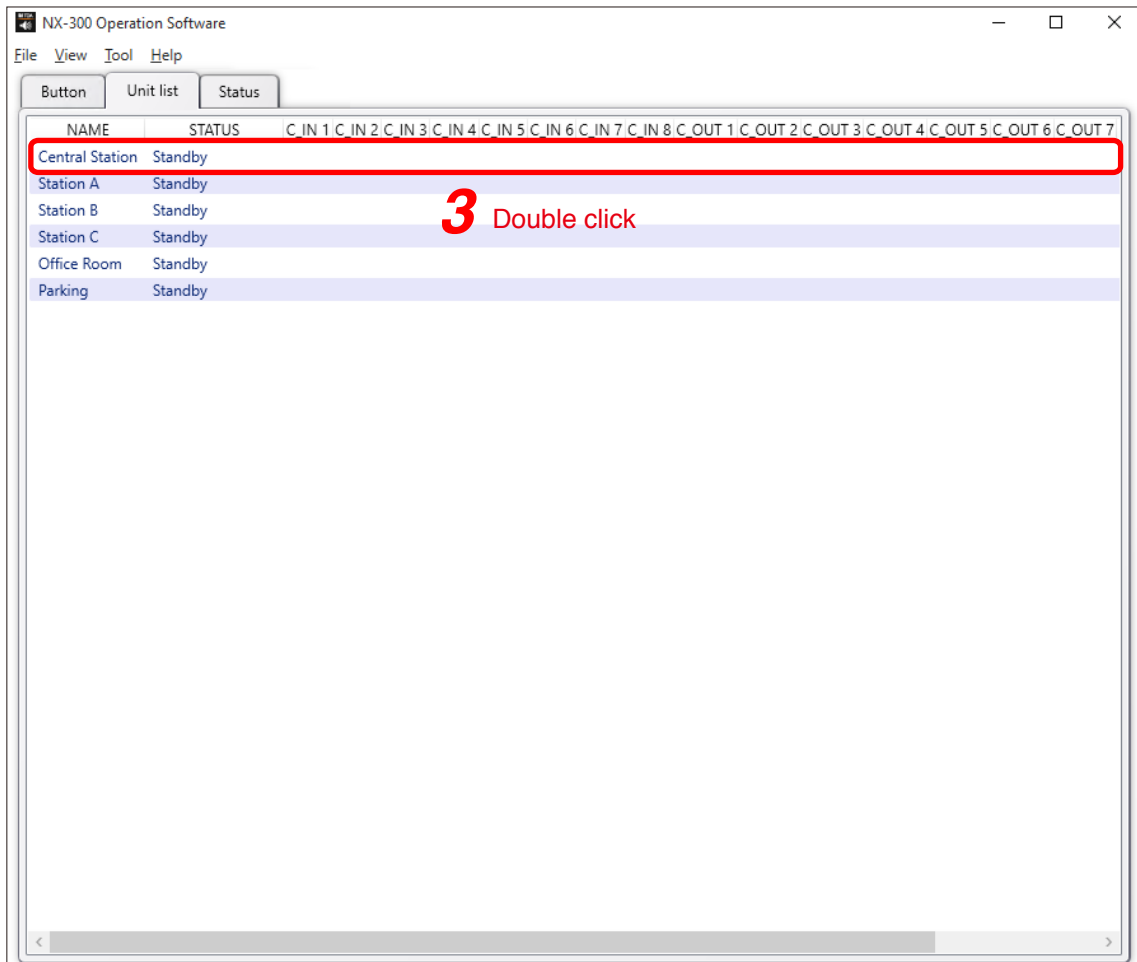
The selection status for the single or group selection buttons are reset.

## 6. CHECKING UNIT STATUS

Single unit information and detailed status regarding current errors, control inputs and outputs, etc. can be confirmed on the detail screen.

### 6.1. Display the Detail Screen

- Step 1.** Select the Unit List tab.  
The unit list screen is displayed.

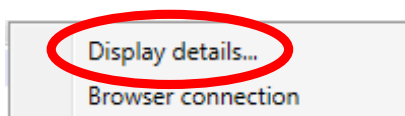


- Step 2.** In the Unit Name column of the unit list, search for the unit for which the detail screen is to be displayed.

- Step 3.** Double-click a line on the list.  
The unit's detail screen is displayed.

**Tip**

Right-clicking the line on the list displays the following menu.  
The detail screen can also be displayed by selecting "Display details..."

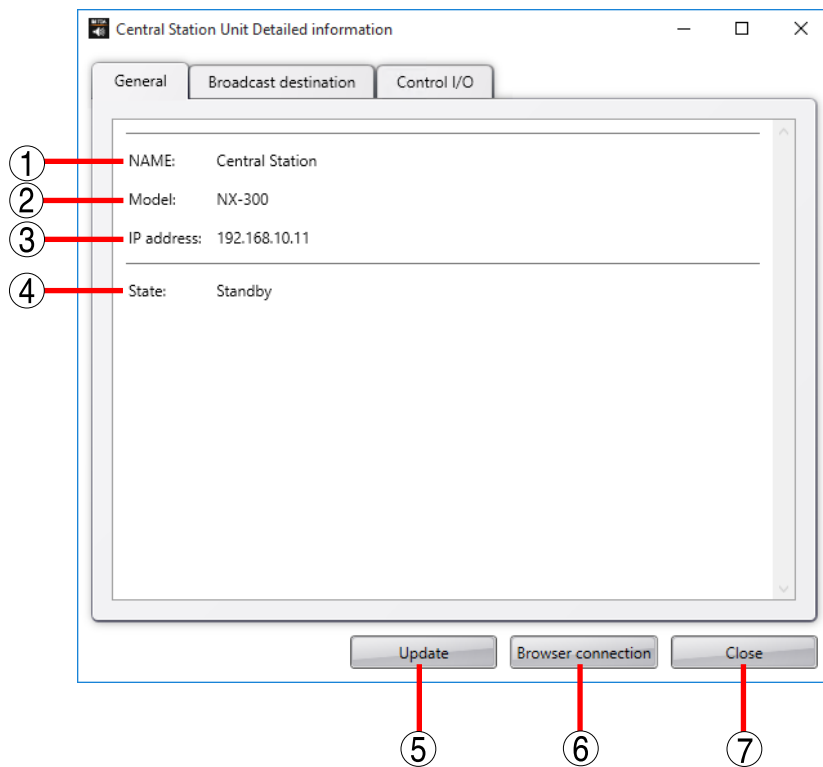


## 6.2. Detail Screen

Display detailed unit information.

### 6.2.1. Detail screen descriptions

[General tab]



#### 1. NAME

Displays the unit name.

#### 2. Model

Displays the model name.

#### 3. IP address

Displays the IP address.

#### 4. State

Displays the current status, such as "Broadcasting" or "Standby"

#### 5. Update button

Updates the displayed content of the detail screen to the latest conditions.

#### 6. Browser connection button

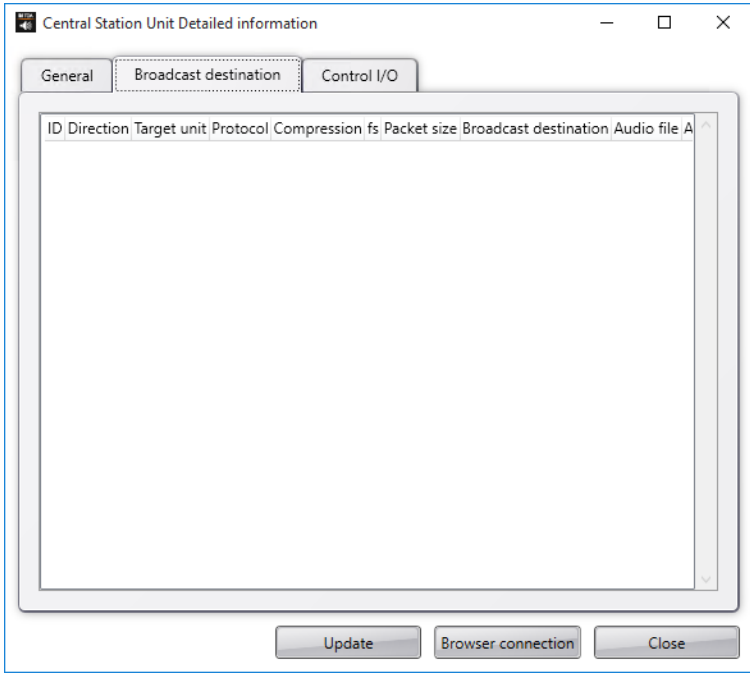
Starts up the browser and accesses the unit.

#### 7. Close button

Closes the detail screen.

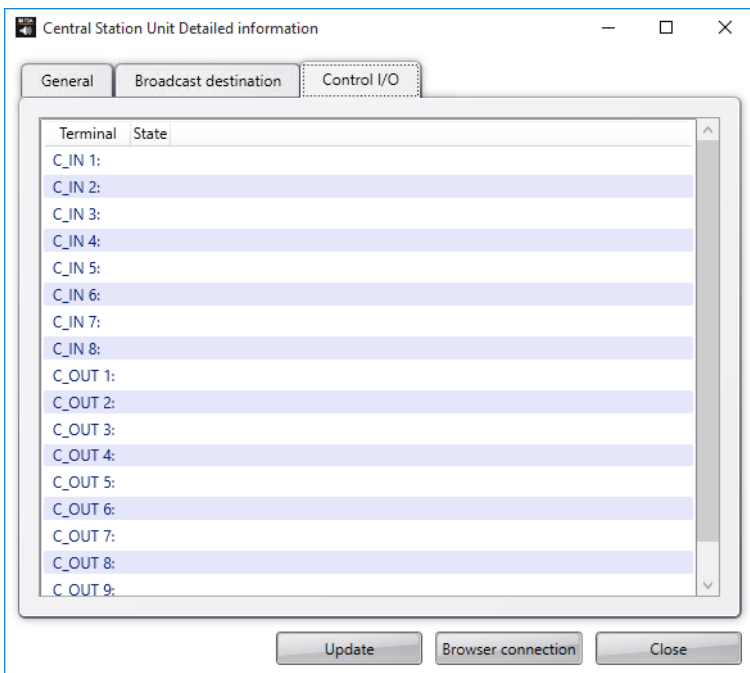
**[Broadcasting destination tab]**

When the unit is broadcasting, the list of all destinations the unit is broadcasting to is displayed.



**[Control I/O tab]**

Displays unit input and output status.



## 7. CHECKING THE OPERATION LOG

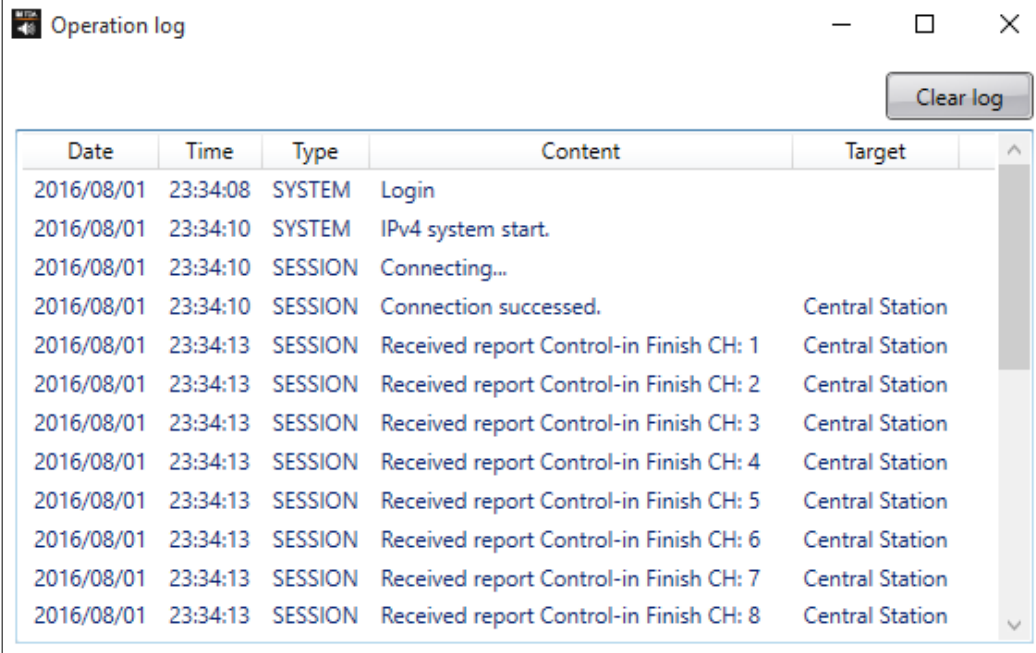
Status of operations and surveillance performed using the NX-300 Operation Software are always automatically saved in the operation log.

The log is saved to the following location:

C:\ProgramData\TOA\NX-300\system name"\Log\year"

### 7.1. Displaying the Operation Log

**Step** : Select “Display” → “Operation Log” from the menu bar.  
The operation log screen is displayed.



The screenshot shows a window titled "Operation log" with a "Clear log" button in the top right corner. Below the button is a table with the following data:

Date	Time	Type	Content	Target
2016/08/01	23:34:08	SYSTEM	Login	
2016/08/01	23:34:10	SYSTEM	IPv4 system start.	
2016/08/01	23:34:10	SESSION	Connecting...	
2016/08/01	23:34:10	SESSION	Connection succeeded.	Central Station
2016/08/01	23:34:13	SESSION	Received report Control-in Finish CH: 1	Central Station
2016/08/01	23:34:13	SESSION	Received report Control-in Finish CH: 2	Central Station
2016/08/01	23:34:13	SESSION	Received report Control-in Finish CH: 3	Central Station
2016/08/01	23:34:13	SESSION	Received report Control-in Finish CH: 4	Central Station
2016/08/01	23:34:13	SESSION	Received report Control-in Finish CH: 5	Central Station
2016/08/01	23:34:13	SESSION	Received report Control-in Finish CH: 6	Central Station
2016/08/01	23:34:13	SESSION	Received report Control-in Finish CH: 7	Central Station
2016/08/01	23:34:13	SESSION	Received report Control-in Finish CH: 8	Central Station

#### [Items displayed in the log]

Date: Date that the event occurred

Time: Time when the event occurred

Type: Type of log

SESSION: Communication between devices

SYSTEM: System information

STREAM: Stream information

Content: The content of the event

Target: A target of the event

#### **Note**

The error log is displayed with a red background, and the warning log is displayed with a yellow background.

### 7.2. Deleting the Operation Log

**Step** : Click the Delete Log button on the operation log screen.  
Logs being displayed are deleted.

#### **Tip**

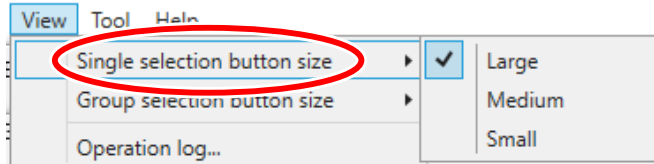
Operation logs stored in the file are not deleted.

## 8. CHANGING BUTTON SIZES

The sizes of the single and group selection buttons on the button screen can be changed.

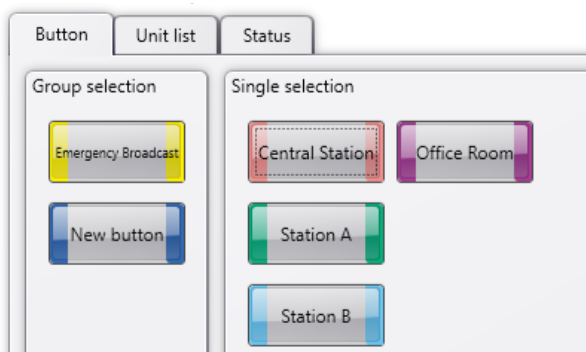
### 8.1. Changing the Size of the Single Selection Button

**Step 1.** Select “Display” → “Single Selection Button Size” from the menu bar.

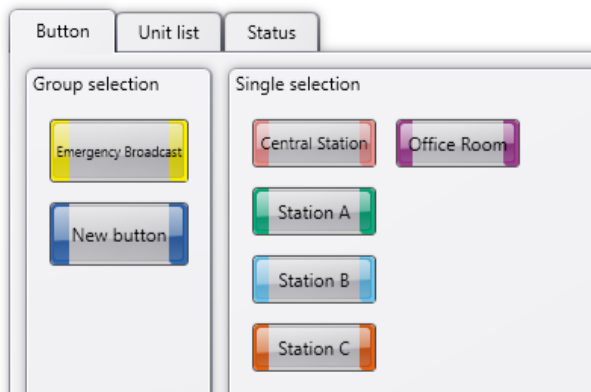


**Step 2.** Select the desired size from among Large, Medium and Small.

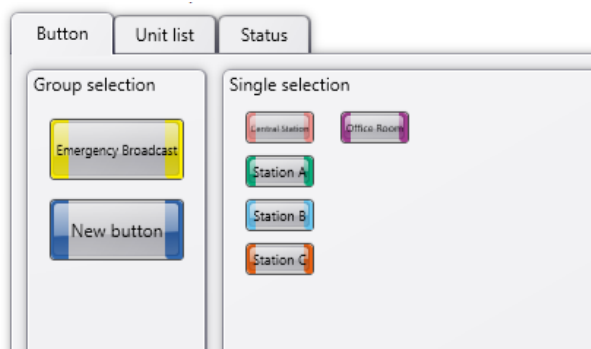
[Large]



[Medium]

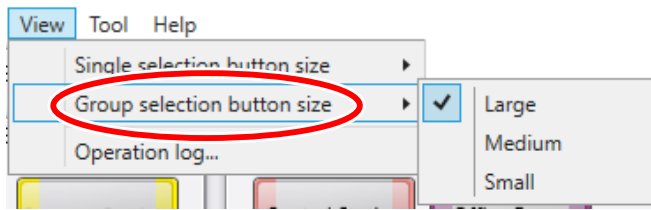


[Small]



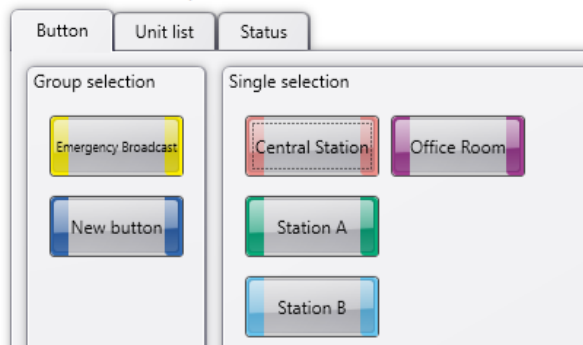
## 8.2. Changing the Size of the Group Selection Button

**Step 1.** Select “Display” → “Group Selection Button Size” from the menu bar.

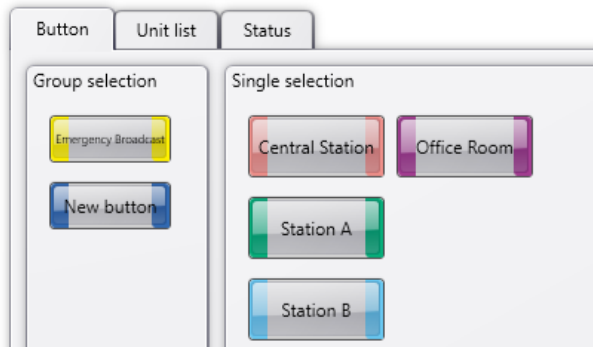


**Step 2.** Select the desired size from among Large, Medium and Small.

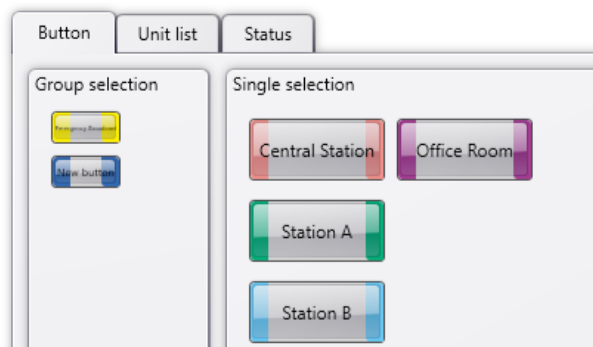
[Large]



[Medium]



[Small]





**Traceability Information for Europe**

Manufacturer:  
TOA Corporation  
7-2-1, Minatojima-Nakamachi, Chuo-ku, Kobe, Hyogo,  
Japan

Authorized representative:  
TOA Electronics Europe GmbH  
Suederstrasse 282, 20537 Hamburg,  
Germany

URL: <http://www.toa.jp/>