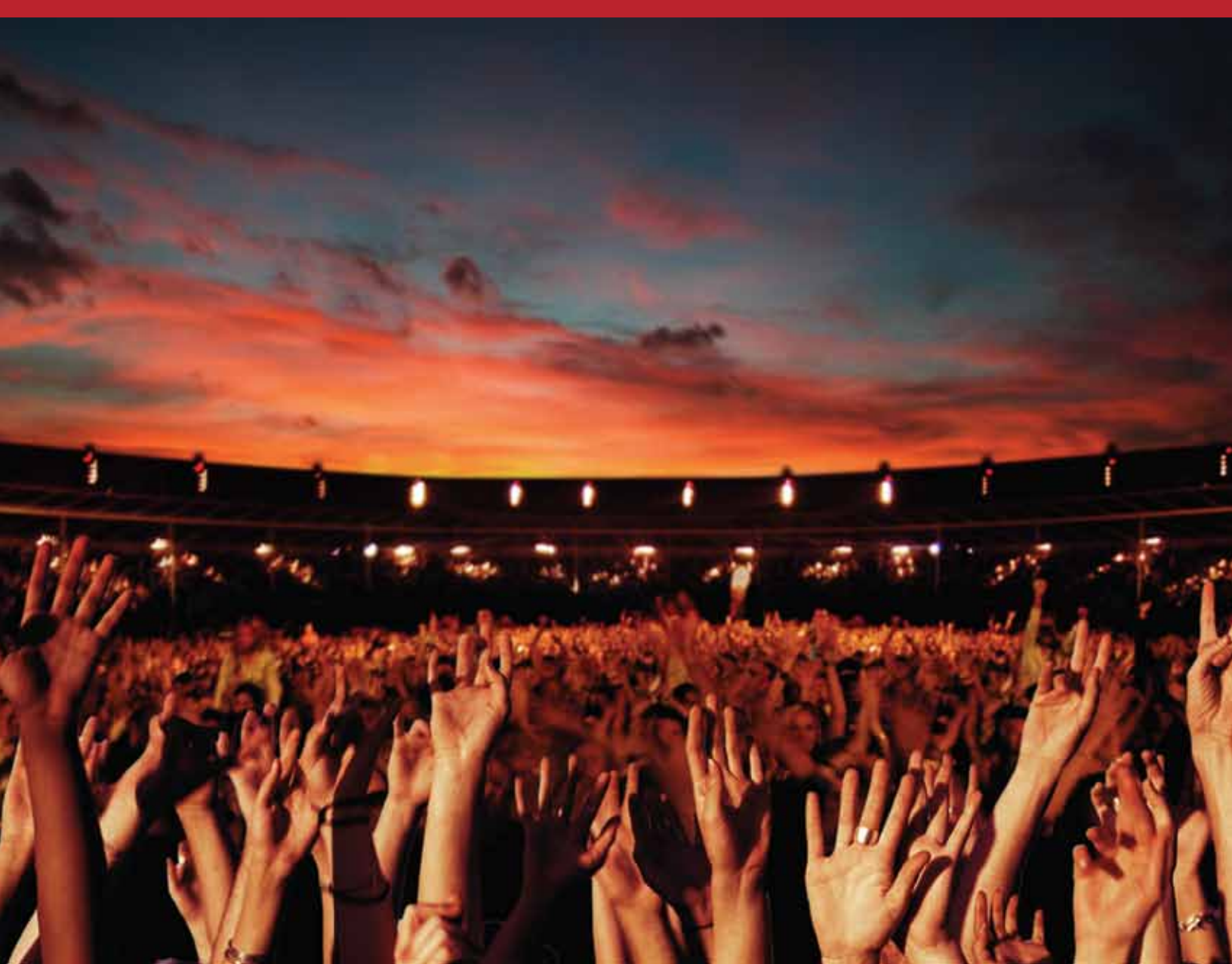


SHURE[®]
LEGENDARY
PERFORMANCE™

UHF-R[®] Wireless Microphone Systems

PREMIER WIRELESS TECHNOLOGY



UHF-R® Wireless Microphone Systems

WIRELESS ON A NEW SCALE

Offering you more productivity, more reliability and more control, UHF-R is premier wireless technology that helps you master the complexities of large-scale wireless installations. UHF-R takes wireless to a completely new level.

Unparalleled control for complex installations.

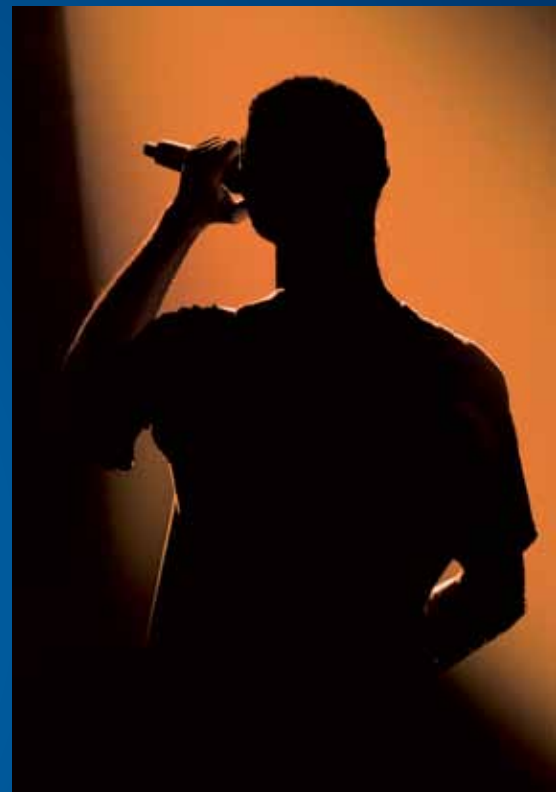
UHF-R automates setup and control operations to save you time and effort on even the most complex networked installations. UHF-R's usability innovations include networked Automatic Frequency Selection with group scan, infrared automatic transmitter sync and smart menu-driven system operation for fast setup and intuitive operation.

Superior RF performance and reliability for every installation.

With 2400 selectable frequencies across 60 MHz of bandwidth, UHF-R provides up to 40 simultaneous compatible systems per band. Advanced Track Tuning Filtering Technology, by shifting the RF filter along with the selected frequency, allows you to deploy this added bandwidth without audio degradation or interference. All UHF-R components – including the compact, sweat-resistant bodypack – are engineered to withstand the abuses of the road. You can rely on UHF-R for consistently reliable performance, always.

Crystal-clear audio that sounds more like wired.

Patented Audio Reference Companding technology delivers crystal-clear audio transmission, far superior to conventional wireless. Unlike other wireless systems, Shure uses a variable companding ratio that responds to the audio level – eliminating wireless artifacts and substantially increasing dynamic range.



Scan, plan and command with included Wireless Workbench® Software

Wireless Workbench is your wireless command center for networked control of Shure UHF-R® series wireless systems. WWB takes the guesswork out of frequency coordination of any Shure Wireless product and provides a graphic display of your RF environment. Scan, plan, and command your wireless systems anywhere with the ultimate system control software from Shure.

Ethernet and USB Compatibility

No additional equipment required to connect to network hub.

Frequency Compatibility

Calculator Wizard

Scans the RF environment to assess all networked hardware and recommends frequencies for all specified wireless systems.

Frequency Selection Wizard

Automatically scans and selects open frequencies for all networked UHF-R receivers.

Comprehensive Infrared Sync

Automatically syncs frequencies, custom groups, lockouts and power settings between transmitters and receivers via PC control.

Band Limiting Feature

View custom frequency band parameters to align with any country or regional RF guidelines that might conflict with the available bandwidth.

Custom Frequency Group Creation

Customize and save frequency groups for specific locations.

UHF-R® Features and Performance

Shure UHF-R® Wireless Systems master the intense pressure and extreme conditions of any touring or installation environment, while delivering unmatched Shure sound.



UR4S+ | UR4D+ Wireless Diversity Receiver

Available in Single Channel and Dual Channel versions.

Up to 3000 selectable frequencies across 75 MHz bandwidth (region dependent)

Track Tuning Filtering Technology

Up to 40 preset compatible systems per band

Up to 160 systems with multiple bands

Networked Automatic Frequency Selection

Infrared automatic transmitter sync (including custom group upload)

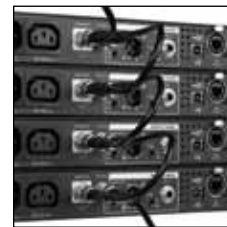
Flash memory to store six 60-channel custom frequency groups

Patented Audio Reference Companding technology

Multi-function bit-mapped backlit LCD

USB and Ethernet network control and monitoring

Remoteable antennas



RF distribution ports allow up to 10 receivers to share a single pair of antennas.

UR5 Portable Diversity Wireless Receiver

Full bandwidth scan & sync at the touch of a button

2400 selectable frequencies across 60 MHz bandwidth

MTx (multi-transmitter) mode – assign and store open frequency information for quick recall across multiple transmitters

Feature-rich, hands-on navigation control

Headphone monitoring output jack

Mic & Aux-level balanced output

Camera shoe and plate mounting options

Full range of power options:

2 AA Batteries
(up to 4 hours continuous use)

Shure Lithium Ion
Rechargeable Battery
(up to 8 hours continuous use)

DC Power



UR2 Handheld Transmitter

Switchable RF Power
(10/50 mW, regionally dependent)

Frequency and Power lockout

Bit-mapped Backlit LCD

2 AA Batteries – Up to 8 hours
continuous use

Infrared automatic transmitter sync

All-metal die-cast construction

Handheld

SM58® Dynamic Cardioid

SM86 Condenser Cardioid

SM87 Condenser Supercardioid

Beta 58® Dynamic Supercardioid

Beta 87A Condenser Supercardioid

Beta 87C Condenser Cardioid

KSM9 Condenser Switchable

Multi-function Displays

UHF-R's bitmapped LCD displays
provide clear access and control
for all integral system functions.



UR2/KSM9/SL

UR3 Plug-on Transmitter

Smart, ergonomic industrial design

Compatible with any wired XLR microphone

Microphone Preset List –
Program custom settings
per microphone for quick recall

Selectable Mic/Line-level input

Sweepable high-pass filter
(35 – 210 Hz)

Switchable 48 V phantom power

2 AA Batteries – Up to 10 hours
continuous use

(Up to 4 hours with phantom power)



Accessories

A range of durable, tour-tested accessories are available to customize UHF-R systems for every application.

Power supply for UR1H – **PS22**

Passive Antenna Splitter Kit – **UA221**
Recommended for 2 receivers.

In-line Antenna Amplifier – **UA830**

Antenna/Power Distribution System – **UA845**
Recommended for 3 or more receivers.

½-Wave Omnidirectional Antenna – **UA860**

Active Directional Antenna – **UA870**

SMA to BNC cable for external antenna for UR1H
– **UA910**

3 Pin Mini LEMO3 Conversion Kit for UR1M –
WA335

3 Pin Mini LEMO3 Jack for Lavaliers – **WA336**

Locking Bodypack Adapter for
TQG connector (Included) – **WA340**

Cloth Bodypack Pouch – **WA580**

Neoprene pouch for UR1M and UR1M-LEMO3 – **WA581**

Weather resistant pouch for UR1H – **WA582**

UR1 Bodypack Transmitter

UR1H High-Power Bodypack Transmitter

Switchable RF Power (UR1)
(10/50 mW or 10/100 mW,
regionally dependent)
250 mW RF Power (UR1H)
Magnesium construction (3.4 oz/97 g)
Frequency and Power lockout
Bit-mapped backlit LCD
2 AA batteries
(8 hours UR1 / 4 hours UR1H)
Infrared automatic transmitter sync
Integrated DC power input (UR1H)



Front view
(97.5 x 60 x 17 mm)

Side view

UR1M Micro-Bodypack Transmitter

Switchable RF Power (10 mW or 50 mW)
Less than half the size of
standard bodypacks
Lightweight magnesium construction
(2.2 oz/62 g)
Conformal coated circuitry for
enhanced sweat resistance
Bit-mapped backlit LCD
2 AAA batteries – Up to 9 hours
continuous use
Audio level metering
TQG or LEMO3 connector options
Selectable battery metering by
battery type



Front view
(49 x 60 x 17 mm)

Side view

TA3F to XLR cable for UR5 – **WA451**

TA3F to 3.5 mm cable for UR5 – **WA461**

Camera Shoe Mount for UR5 – **AFP512**

Plate Mounting for UR5 – **AFP522**

Plate Mounting with DC Power for UR5 – **AFP522DC**

Lithium Ion Rechargeable Battery for UR5 – **SB900**



UA830



UA870



UA860



WA340



WA581B

UHF-R® System

| | |
|---|---|
| RF Carrier Frequency Range | 470–952 MHz (available frequencies depend upon applicable country regulations) |
| Working Range | 150 m (500 ft.) under typical conditions; 500 m (1640 ft) line of sight (NOTE: Operating range depends on many variables, including RF signal absorption, reflection and interference) |
| Audio Frequency Response | 40-18,000 Hz, +1/ -3 dB (NOTE: Overall system frequency response depends on the microphone element) |
| System Distortion (ref. +/-38 kHz deviation, 1 kHz modulation) | 0.3% THD typical |
| Dynamic Range | >102 dB or >110 dB A-weighted, region-dependent |
| Ultimate Quieting (ref. 45 kHz deviation) | >105 dB A-weighted |
| Operating Temperature Range | -18° to 57° C (0° to 135° F) (NOTE: Battery characteristics may limit this range) |

UHF-R® Receivers

| | UR4S+ / UR4D+ Diversity Receiver | UR5 Premium Portable Receiver |
|---------------------------|--|---|
| Overall Dimensions | 43.5 mm H x 482.6 mm W x 365.38 mm D (1.718 x 19.000 x 14.385 in.) | 83 mm H X 65 mm W X 22 mm D (3.26 x 2.559 x .866 in.) |
| Net Weight | UR4S+ 5.0 kg (10.9 lbs) UR4D+ 5.1 kg (11.2 lbs) | 200 g (with AA batteries) |
| Audio Output Level | +24 dBu (-6 dBu mic) | Camera: adjustable -35 dBV to +10 dBV peak. Headphone: 100 mW |
| Output Impedance | 200 Ω (150 Ω mic) | n/a |
| RF Sensitivity | UR4S+: -110 dBm typical for 12 dB SINAD; -105 dBm typical for 30 dB SINAD UR4D+: -107 dBm typical for 12 dB SINAD; -102 dBm typical for 30 dB SINAD | -106 dBm for 12 dB SINAD, -88 dBm for 30 dB SINAD |
| Image Rejection | 110 dB typical | (ref. 12 dB SINAD) >100 dB (typical) |
| Spurious Rejection | 90 dB typical | (ref. 12 dB SINAD) >80 dB (typical) |
| Power Requirements | 90 to 230 V AC, 50/60 Hz | 2 AA batteries / 10-18 V DC [when used with DC power adapter] |
| Power Consumption | UR4S+: 9.6 – 13.2 W; UR4D+: 12 – 16 W; UA845: 15 -16 W | 5V (12.5 W Max) [when used with DC power adapter] |

UHF-R® Transmitters

| | UR1M Micro-Bodypack | UR1 Bodypack / UR1H High Power | UR2 Handheld Transmitter | UR3 Plug-on Transmitter |
|------------------------------|--|---|---|--|
| Gain Adjustment Range | -20 dB to +35 dB | -20 dB to +35 dB | -10 dB to +20 dB | 10 to +20 dB (Line Input Setting) -10 to +20 dB (Mic Input Setting) |
| Maximum Input Level: | +5 dBu (sensitivity 0 dB) +15 dBu (sensitivity -10 dB) | +10 dBu (sensitivity 0 dB), +20 dBu (sensitivity -10 dB) | +4.8 dBu | +24 dBV (Line Input, 0dB gain) -31 dBV (Mic Input, 0dB gain) |
| Input Impedance | 200 kΩ TQG, 8.2 kΩ LEMO3 | >1 MΩ | 1 MΩ | 4300 ohms LINE Input Setting 1800 ohms MIC Input Setting |
| Output Impedance | 50 Ω | 50 Ω | 50 Ω | 50 Ω |
| RF Power Output | 10 mW or 10/50 mW (region dependent) | 10 mW, 10/50 mW, or 10/100 mW (region dependent) | 10 mW or 10/50 mW (region dependent) | 10 mW or 50 mW (region dependent) |
| Housing | Cast magnesium | Cast magnesium | Aluminum die-cast handle and aluminum machined battery cup | Cast magnesium |
| Connector Types | LEMO3, TQG | — | — | XLR (female) |
| Power Requirements | 2 AAA batteries (alkaline, lithium primary, or NiMH types) | 2 AA (alkaline, lithium primary, or NiMH batteries) | 2 AA (alkaline, lithium primary, or NiMH batteries) | 2 AA (alkaline, lithium primary, or NiMH batteries) |
| Battery Life | 8 hours typical | 8 hours typical | 8 hours typical | 10 hours typical (no phantom power) 10 mW 4 hours typical (with 48 V phantom power) 50 mW |
| Overall Dimensions | 49 mm L x 60 mm W x 17 mm D (1.92 x 2.38 x 0.66 in.) | 97.5 mm L x 60 mm W x 17 mm D (3.84 x 2.38 x 0.66 in.) | 254 mm L x 51 mm dia. (10 x 2 in.) | 117 mm L x 36 mm W x 43 mm D (4.6 x 1.4 x 1.7 in.) |
| Net Weight | 62 g (22 oz) without batteries | 97 g (3.4 oz) without batteries | Varies by capsule type | 198 g (7.0 oz.) (with AA batteries) |

SHURE®
LEGENDARY
PERFORMANCE™

**United States, Canada,
Latin America, Caribbean:**
Shure Incorporated
5800 West Touhy Avenue
Niles, IL 60714-4608 USA

Phone: 847-600-2000
Fax: 847-600-1212 (USA)
Fax: 847-600-6446
Email: info@shure.com

Europe, Middle East, Africa:
Shure Europe GmbH
Jakob-Dieffenbacher-Str. 12,
75031 Eppingen, Germany

Phone: 49-7262-92490
Fax: 49-7262-9249114
Email: info@shure.de

Asia, Pacific:
Shure Asia Limited
22/F, 625 King's Road
North Point, Island East
Hong Kong

Phone: 852-2893-4290
Fax: 852-2893-4055
Email: info@shure.com.hk