



AcousticCoverage™ Series

AC-C6T

Two-way, ceiling mount loudspeaker

Features

- High quality transducers provide exceptional clarity through the critical voice range.
- Improved musicality often not seen in typical BGM class products.
- Ported baffle for increased low frequency extension down to 65 Hz.
- Low saturation 70/100V transformers with 8 ohm bypass.
- 4-pole Euroblock connector eases system wiring.
- Advanced voicing via QSC Intrinsic Correction™, applied using Q-Sys™ processing or CXD amplifier platforms.
- White (RAL 9010) with UV inhibitors to match complimenting QSC product families.
- Complete EASE, CF2, CAD, & BIM information available online



Wide Area Paging · Background Music · Office Buildings · Healthcare Facilities · Concourses · Transportation Terminals · Ancillary Support in Larger Systems

The QSC AcousticCoverage™ AC-C6T is a ceiling-mounted 6" two-way loudspeaker with 70/100V transformer, suitable for a wide variety of voice paging and background music sound reinforcement applications.

AcousticCoverage™ is designed to offer integrators a cost-effective solution for applications where voice reinforced coverage is of primary concern, while providing improved musicality often not seen in typical BGM class products.

The high quality 6-inch polypropylene cone transducer with butyl rubber surround and the sensitivity matched coaxially mounted .86-inch silk dome tweeter offers pristine clarity through the critical vocal range for increased speech intelligibility. With 110 degrees of conical coverage, the AC-C6T reduces the number of loudspeakers required for even coverage in low ceiling applications.

The easy-to-install blind mount assembly features a ported baffle which optimally tunes the galvanized steel backcan for added musicality, creating low frequency extension down to 65 Hz. To maintain this frequency response, the AC-C6T utilizes a 30-watt low-saturation and low-loss 70/100V transformer with varying selectable taps, including an 8Ω bypass. The rotary tap selector switch is accessible under the painted steel grille.

To further enhance performance and speed of install with optimum result, advanced voicing via QSC Intrinsic Correction™ techniques are obtainable using Q-Sys™ networked audio processing platforms, including CXD amplifiers for a complete QSC systems solution.

Installers will appreciate the 4-pole Euroblock connector for loop-thru wiring, located under a quick access swivel plate. Eliminating the termination hassles of star topology wiring designs, the generous Euroblock of the AC-C6T can accept four 18AWG pairs.

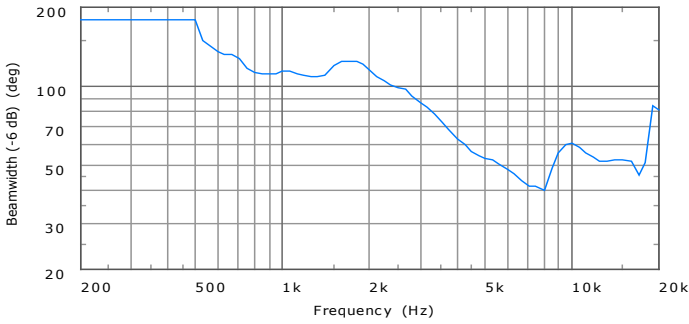
A safety tether tab is affixed to the adjustable conduit clasp plate for seismic-sensitive installations. C-ring and tile rails are included with each pair packed assembly, complete with joining screws and cut-out template.

The AC-C6T baffle and grille are QSC standard white (RAL 9010) to match complimenting QSC product families and includes UV inhibitors to prevent discoloration over time. The AC-C6T may also be painted to match any décor.

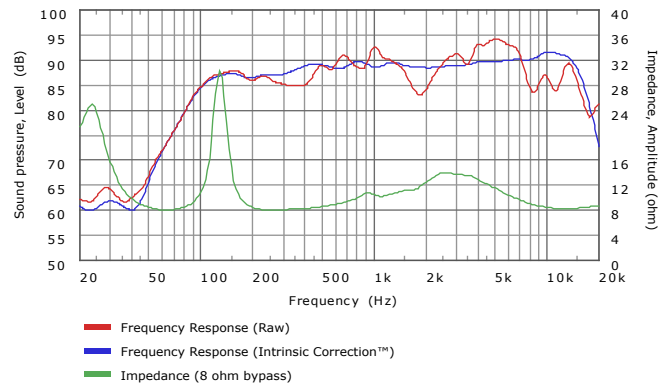
For your system integration needs, complete EASE, CF2, CAD, and BIM files are available for download at QSC.com.

AC-C6T Details

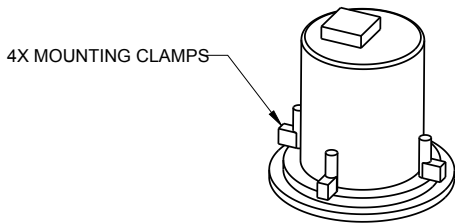
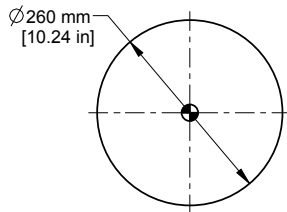
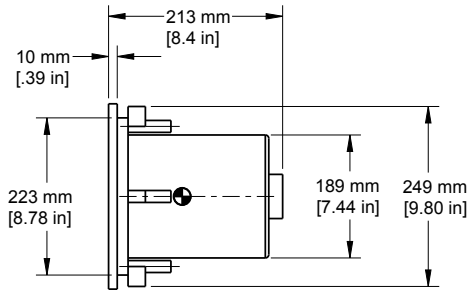
Beamwidth:



Impedance / Frequency Response:



Dimensions:



AC-C6T Specifications:

System Details	AC-C6T
Effective frequency range ¹	65 Hz – 20 kHz
Rated noise power / voltage ²	30 watts / 15.5 volts (rms)
Broad-band sensitivity ³	89 dB SPL
Coverage angle (-6 dB)	110° (500 Hz - 5 kHz)
Maximum continuous SPL ⁴	104 dB
Maximum peak SPL ⁴	110 dB
Rated bypass impedance	8 ohms
Transformer taps	70 V: 30, 15, 7.5, 3.7, 1.9 watts 100 V: 30, 15, 7.5, 3.8 watts 8 ohm bypass
HF transducer	22 mm [8.6 in] silk dome tweeter, coaxially mounted
LF transducer	152 mm [6 in] Polypropylene cone with butyl rubber surround
Input connector type	Euroblock connector with parallel output terminals
Baffle material	Painted ABS polymer
Grille material	Painted steel
Back can material	Galvanized steel
Testing	Listed UL1480, UL2043 safe for use in air handling space
Net weight	3.5 kg [7.6 lb]
Product dimensions	Ø260 x 213 mm [Ø10.24 x 8.4 in]
Cut-out Dimensions	Ø229 mm [Ø9 in]
Ceiling Capture Thickness	6.35 - 38.1 mm [0.25 - 1.5 in]
Shipping weight	9.5 kg [21 lb] (pair packed)
Shipping dimensions	622 x 318 x 324 mm [24.5 x 12.5 x 12.8 in]
Included accessories	Rails & C-ring for ceiling tile installation

¹ Half-space, -10 dB from on-axis sensitivity ² IEC60268-1 noise signal for 2 Hrs

³ On-Axis, half-space sensitivity, 2.83V, 1 m ⁴ Calculated from rated noise voltage and sensitivity

As part of QSC's ongoing commitment to product development, specifications are subject to change without notice.



1675 MacArthur Boulevard • Costa Mesa, CA 92626 • Ph: 800/854-4079 or 714/957-7100 • Fax: 714/754-6174

© 2014 QSC Audio Products, LLC. All rights reserved. QSC and the QSC logo are registered trademarks of QSC Audio Products, LLC in the U.S. Patent and Trademark office and other countries. AcousticCoverage, DMT, Intrinsic Correction and Q-Sys are trademarks of QSC.



please recycle